



OWEN ELECTRIC CONNECTION

February 2025 • Owen Electric • A Touchstone Energy Cooperative

Understanding factors that impact your energy bills

February often ushers in some of the coldest weather of the year, causing home heating systems to run harder and longer to keep us warm. This increased energy usage typically leads to higher energy bills.

Several factors influence electricity prices, but you can take steps to reduce energy consumption at home. When you receive your monthly bill from Owen Electric Cooperative, it includes a summary of how much electricity you used during the billing cycle. It even highlights patterns, such as spikes in energy use over the course of the previous year.

However, beyond your household's energy use, external factors also impact electricity costs:

Fuel prices

Owen Electric purchases electricity from East Kentucky Power Cooperative, our power generation and transmission provider. Generating and transmitting electricity constitutes a large portion of the cost to provide electric service to homes and businesses. Fuel prices—such as those for natural gas and coal—fluctuate based on supply and demand, and these changes affect electricity costs. We work

closely with EKPC to stabilize prices and minimize the impact of fuel price volatility on our members.

Extreme weather

While we can't control the weather, we monitor patterns and forecasts to prepare for periods of extreme cold or heat when electricity demand tends to spike. These spikes often result in increased energy consumption at your home, driving an increase in your bill.

Infrastructure and equipment

To cover the costs of delivering electricity, Owen Electric members pay a flat monthly customer charge. This fee supports the maintenance of essential infrastructure like power lines and other equipment, ensuring reliable service for all members.

Energy policy and regulations

Federal energy policies and regulations significantly influence electricity costs. As the energy industry transitions toward renewable sources and implements stricter regulations for traditional fuel sources such as natural gas and coal, utilities must make costly upgrades. These expenses are passed along to consumers. With U.S. power consumption expected to double by 2050, electric cooperatives across the country are advocating for smart energy policies to support reliable, affordable power.




DIANN DIEHL

Taking control of your energy use

While some factors affecting electricity costs are beyond our control, you can take steps to manage your energy use at home. Adjusting your thermostat to the lowest comfortable setting is one of the most effective ways to save energy and money, as heating and cooling represent a significant portion of household energy use. Remember to service your HVAC system annually and replace filters as needed.

At Owen Electric, we're your energy partner, committed to helping you save. Visit owenelectric.com to explore efficiency programs designed to lower energy use, or schedule a free in-home energy audit. As always, we remain dedicated to providing reliable power at an affordable cost.



A Touchstone Energy® Cooperative 

President and CEO
Michael Cobb



EFFECTIVE WAYS

to lower home energy use



Thermostat management

The thermostat is one of the best places to lower your energy use because heating and cooling account for a significant portion of home energy consumption. During winter months, adjust your thermostat to the lowest comfortable setting to reduce energy use. The Department of Energy recommends 68 degrees or lower.



Utilize off-peak energy times

Plan energy-intensive chores and tasks, such as running the dishwasher or washing clothing, during off-peak energy hours, when the demand for electricity is lower. Off-peak times are early in the morning or late evenings. By scheduling these activities during off-peak periods, you can help keep rates lower, reduce demand and relieve pressure on the grid.



Seal your home

According to Energy Star, about 20% of heated or cooled air that moves through a home is lost due to lack of proper insulation and air leaks. Ensure your home has sufficient insulation levels and seal air leaks around windows and doors with caulk and weather stripping. This is a simple, effective way to lower energy use and improve indoor comfort.



Maintain equipment

The health of your heating and cooling system is essential for comfort and can greatly impact energy bills. Maintain your system by regularly replacing dirty filters and scheduling annual inspections for maintenance and necessary repairs. Outside factors, such as fuel and equipment costs and extreme weather, can impact electricity prices. But you have the power to control home energy consumption by taking proactive steps to reduce energy use.

Enroll your connected thermostat and get money back. Find out more at simplesaver.coop.

NRECA

Wrapped in savings

Proper insulation improves energy efficiency and home comfort by reducing heat loss in winter and heat gain in summer. Older homes often lack adequate insulation, but even newer homes can benefit from upgrades. While not the cheapest improvement, adding insulation and air sealing provides significant energy savings and comfort.

Key areas to insulate include attics, ceilings, crawlspaces, walls, floors and ductwork in unconditioned spaces. Insulation effectiveness is measured by R-value—higher values mean better heat resistance. R-value needs vary by climate, heating/cooling systems, and location in the home.



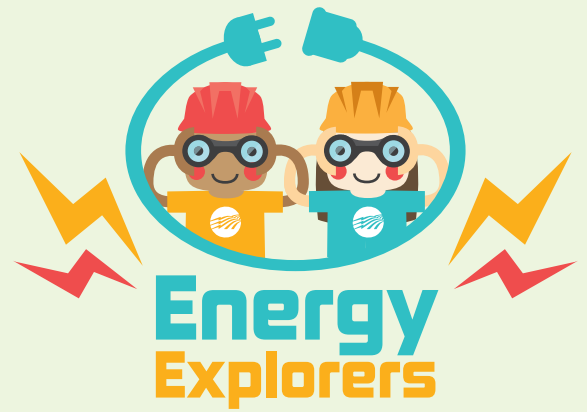
ERIK MCLEAN

Insulation materials range from fiberglass rolls to recycled cellulose. Consult an expert to choose the best option for your budget, climate and needs.

Visit energy.gov/insulation for recommended R-values by climate zone. Proper insulation reduces energy use and enhances comfort.

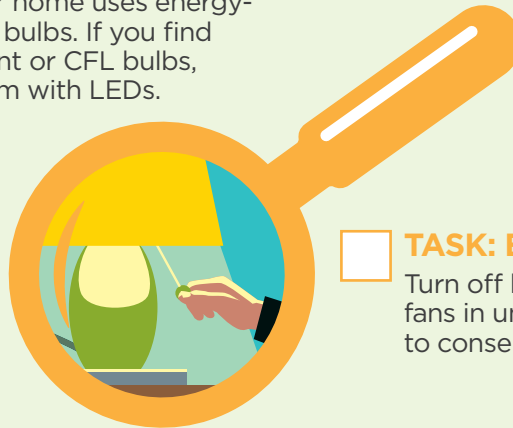
ENERGY SAVINGS SCAVENGER HUNT

Saving energy at home is a great way to help the environment (and save money). With the help of an adult, look for ways you can save energy around your home. Use the tips below to get started, then check off the areas where you've identified ways to save!



TASK: Bright ideas

Ensure your home uses energy-saving LED bulbs. If you find incandescent or CFL bulbs, replace them with LEDs.



TASK: Empty rooms

Turn off lights and ceiling fans in unoccupied rooms to conserve energy.



TASK: Sealed for savings

Check windows to make sure they are closed and locked. Sealed windows help prevent air leaks, which saves energy.

TASK: Set to save

Check the thermostat to see if it can be adjusted a few degrees (either lowered in winter or raised in summer) to conserve energy used for heating or cooling your home.



TASK: Slay energy vampires

Energy vampires are devices that consume energy even when they're not being used. Unplug these items, like phone chargers and tablets, when you're not using them.

Board of Directors

Alan Ahrman, Chairman
Eddie McCord, Vice Chairman
Charlie Richardson, Secretary-Treasurer
John Grant
Rick Messingschlager
Hope Kinman
Robert True

Michael Cobb, President and CEO
James M. Crawford, Attorney
Whitney Prather Duvall, Editor

Office Hours:

Monday – Friday
8 a.m. – 4:30 p.m.

Toll-free 1-800-372-7612

Owenton Office

8205 Hwy 127 N.
P.O. Box 400
Owenton, KY 40359-0400
(502) 484-3471

Boone County Office

Florence Government Center
8100 Ewing Blvd.
Florence, KY 41042

Grant County Office

300 Arbor Drive, Suite 1
Dry Ridge, KY 41035

Pendleton County Office

10599 Hwy 27 N.
Butler, KY 41006

www.owenelectric.com

This institution is an equal opportunity provider.

Follow us on social media:



Safety first: Line crew installs aerial markers for enhanced visibility

The open green space in front of our headquarters serves as a landing zone for first responders. In November, Jordan Alford, Micah Duvall, Josh Hearn and Simon Peters placed aerial marker balls on the power lines surrounding the area. They are a safety measure to protect electrical infrastructure and to prevent collisions between aircraft and power lines.

Photos: Whitney Duvall



Summary of Owen Electric's bylaws relating to annual election process for directors

Each member shall receive notice and be eligible to vote and participate in the annual meeting, scheduled for Friday, June 6, 2025. Our process for the election of directors, as defined fully in the bylaws, is as follows: A nominating committee shall be appointed by the board of directors prior to April 7, 2025. The nominating committee shall meet and nominate qualified individuals for directorship on the Owen Electric Board by April 22, 2025, and post these names at the offices of the cooperative. If a member wishes to be placed on the ballot for the position for which the term is expiring, the member must secure

a petition signed by 40 members who reside in the same district and then present the signed petition at the OEC president's office at the headquarters location in Owenton by the close of business (4:30 p.m.) on March 28, 2025. To review more information pertaining to the annual meeting, the election process, and the board of directors, refer to the complete Owen Electric bylaws found in the December 2024 edition of *Kentucky Living* or call (800) 372-7612 to request a current copy of Owen Electric's bylaws. For more information, visit the Cooperative Documents link under the Member Central tab at www.owenelectric.com.