

**OWEN ELECTRIC COOPERATIVE
REGULAR BOARD MEETING
March 27, 2025**

PRESENT The regular meeting of the Board of Directors of Owen Electric Cooperative, Inc., was held at the Headquarters Building in Owenton, Kentucky, on March 27, 2025. Alan Ahrman appeared via teleconference and all other Directors were present. Also present were: Mike Cobb, Jim Petreshock, Erin Rehkamp, Andrew Long, Mike Stafford, Brian Jones, Lucas McNally, Pam McAlister, and Attorney Jake A. Thompson.

**CALL TO ORDER,
PLEDGE OF ALLEGIANCE
AND INVOCATION**

The meeting was called to order, and the Pledge of Allegiance and invocation were given by Charlie Richardson and Bob True, respectively.

ADOPTION OF

AGENDA Upon a motion by Hope Kinman, second by Eddie McCord, the Board voted unanimously to adopt the March 27, 2025, Board Meeting Agenda as presented.

MINUTES

APPROVED Upon a motion by Rick Messingschlager, second by John Grant, the February 27, 2025, Regular Board Meeting Minutes were approved as submitted.

SAFETY

MOMENT Jim Petreshock gave the safety moment on severe weather awareness and preparedness.

**MEMBER
CONCERNS**

A letter from The Satilla Rural Electric Membership Corporation was shared thanking the Cooperative for rendering mutual aid during a recent storm.

NEW MEMBERS

ACCEPTED The Directors then reviewed and accepted the listing of 312 New Members.

**REVIEW OF LISTING OF
TERMINATED ACCOUNTS**

The Directors then reviewed and accepted as information a listing of the terminated accounts for the month.

**REVIEW OF PRESIDENT'S, CONSULTANT'S AND DIRECTORS'
EXPENSES**

The Directors then reviewed and accepted as information a listing of February expenses incurred by the President, Consultant and Directors.

UNCOLLECTIBLE WRITE-OFFS AND CAPITAL CREDIT PAYMENT

The Board reviewed 63 member write-offs of \$11,605.96.

The Board reviewed payment of \$23,644.41 in Capital Credits.

Upon a motion by Eddie McCord, second by John Grant, the Board voted unanimously to approve the Uncollectible Write-Offs, Capital Credit Payments and Consent Agenda Items.

PRESIDENT/ CEO REPORT

Mike Cobb presented the CEO Report for the month of March, 2025, in accordance with the summary attached hereto and made a part of these minutes.

Mike reviewed with the Board the following:

Depreciation Study – Mike reviewed the ongoing Depreciation Study for 2020-2024. Discussion was had regarding the need for Owen's depreciation rate to be accurate.

Where does the Member's Money Go – Mike reviewed Owen's Revenue Distribution with the Board and explained the percentage of margins Owen has.

CORPORATE SERVICES AND ACCOUNTING

Erin Rehkamp presented the Corporate Services and Accounting report in accordance with the summary attached hereto and made part of these minutes. Erin reported \$1,439,870.98 net margins through February 2025 and net margins for the month of \$477,604.79. Erin reported the Coop had gone 311 days as of March 27th without a lost time injury. Erin reported the cost of power in January 2025 was \$.859 cents of every dollar of revenue. Erin reported the Coop currently has 119 full-time employees, with three (3) vacancies.

MEMBER SERVICES

Mike Stafford presented the Member Services report for the month in accordance with the summary attached hereto and made part of these minutes. Mike reported accounts billed for the month of February 2025, of 67,281 compared to 66,247 for the same period last year. Mike reported energy audits of 101 through February of 2025, compared to 114 in 2024.

Confidential discussion regarding OEC's current branch offices was had between staff and board members. Board members directed staff to

continue to research the issues discussed.

OPERATIONS

Brian Jones presented the Operations report for the month in accordance with the summary attached hereto and made part of these minutes.

TECHNOLOGY

Jim Petreshock presented the Technology report for the month in accordance with the summary attached hereto and made part of these minutes.

ENGINEERING

Andrew Long and Lucas McNally presented the Engineering report for the month in accordance with the summary attached hereto and made part of these minutes.

BOARD DISTRICT

REVIEW After review, upon motion by John Grant, second by Hope Kinman, the Board voted unanimously to approve the current seven (7) Board Districts.

EKPC DIRECTOR

NOMINATION After discussion, upon motion by Charlie Richardson, second by Rick Messingschlager, the Board voted unanimously to nominate Alan Ahrman as the EKPC Director for 2025-2026.

EKPC REPORT

Alan Ahrman gave the March 2025 EKPC Board meeting report in accordance with the summary and minutes of said meeting prepared by EKPC staff. The actual summary and minutes cannot be attached to these minutes because of the terms of a Confidentiality and Non-Disclosure Agreement EKPC has required the coop's director representative and CEO to sign before being allowed to attend said meetings.

KEC REPORT

Rick Messingschlager presented the March 2025, Kentucky Electric Cooperative's Board Meeting report in accordance with the minutes and summary of said meeting prepared by KEC staff. The actual minutes and summary of the meeting cannot be attached to these minutes at the request of KEC.

ATTY. REP. Jake A. Thompson reported there was no new litigation for the month.

TRAINING/MEETINGS

Wage & Audit Committee Meeting – April 17, 2025

OEC Regular Board Meeting - April 24, 2025

NRECA Legislative Conference - April 27-30, 2025

OEC Regular Board Meeting – May 28, 2025

Membership Appreciation Days – June 5-6, 2025

Annual Business Meeting – June 6, 2025

OEC Regular Board Meeting – June 26, 2025

OEC Regular Board Meeting – July 31, 2025

OEC Regular Board Meeting – August 21, 2025

OEC Regular Board Meeting – September 25, 2025

NRECA Regional Meeting – October 21-23, 2025

OEC Regular Board Meeting – October 30, 2025

OEC Regular Board Meeting – November 20, 2025

OEC Regular Board Meeting – December 18, 2025

Power Xchange – March 6-11, 2026

NRECA Legislative Conference – April 26-29,—2026

CONFERENCE

REPORTS None.

OLD BUSINESS

None.

NEW BUSINESS


None.


EXECUTIVE SESSION

Upon motion by Rick Messingschlager, second by Hope Kinman, the Board voted unanimously into Executive Session at 11:15 a.m.

Upon motion by Charlie Richardson, second by Eddie McCord, the Board voted unanimously to exit Executive Session at 11:25 a.m.

ADJOURN Upon a motion by Hope Kinman, second by Charlie Richardson, the Board voted unanimously to adjourn the meeting.


Chairman


Secretary



OWEN *Electric*

A Touchstone Energy Cooperative



REGULAR BOARD MEETING

March 27, 2025

Agenda

- Directors Present/Absent
- Call to Order/Pledge of Allegiance/Invocation

Agenda & Minutes

- Adoption of Agenda (Tab 3)
- Approval of Minutes of
Previous Meeting (Tab 4)



Safety Moment

Jim Petreshock

Review/Discuss Member Compliments and/or Concerns

Review Agenda

- Review New Members: 312
(Listing on Board Table & in Board Paq)
- Review Listing of Terminated Accounts:
225 Members at \$40,855.25
(Listing on Board Table & in Board Paq)

Review Agenda

Review of President's, Directors' and Consultant Expenses

Consent Agenda Items

- Approve Uncollectible Member Write-offs:

63 Members at \$11,605.96

(Listing on Board Table and in Board Paq)

- Approve Payment of Capital Credits: \$23,644.41

(Tab 11)

- Approval of Consent Agenda Items

– Motion _____

– Second _____



President/CEO Report

March 27, 2025

Board Meeting



President's Report Topics

- Depreciation Study
- Where does the Member's Money Go?
- Misc. Topics & Other Discussion

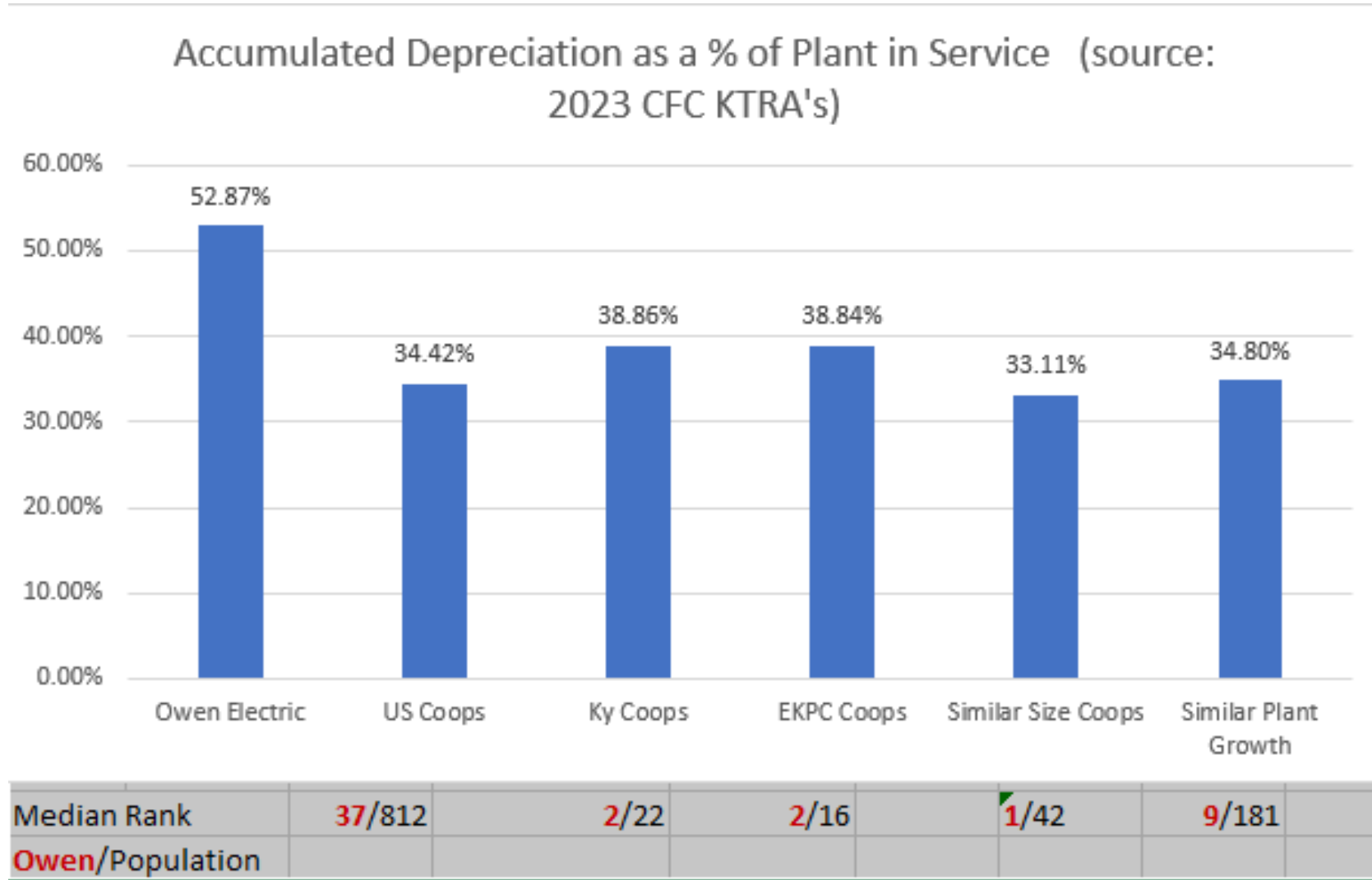


Depreciation Study

Depreciation Study (Five Year Review) is underway for the period (2020 – 2024)



Depreciation Benchmarks



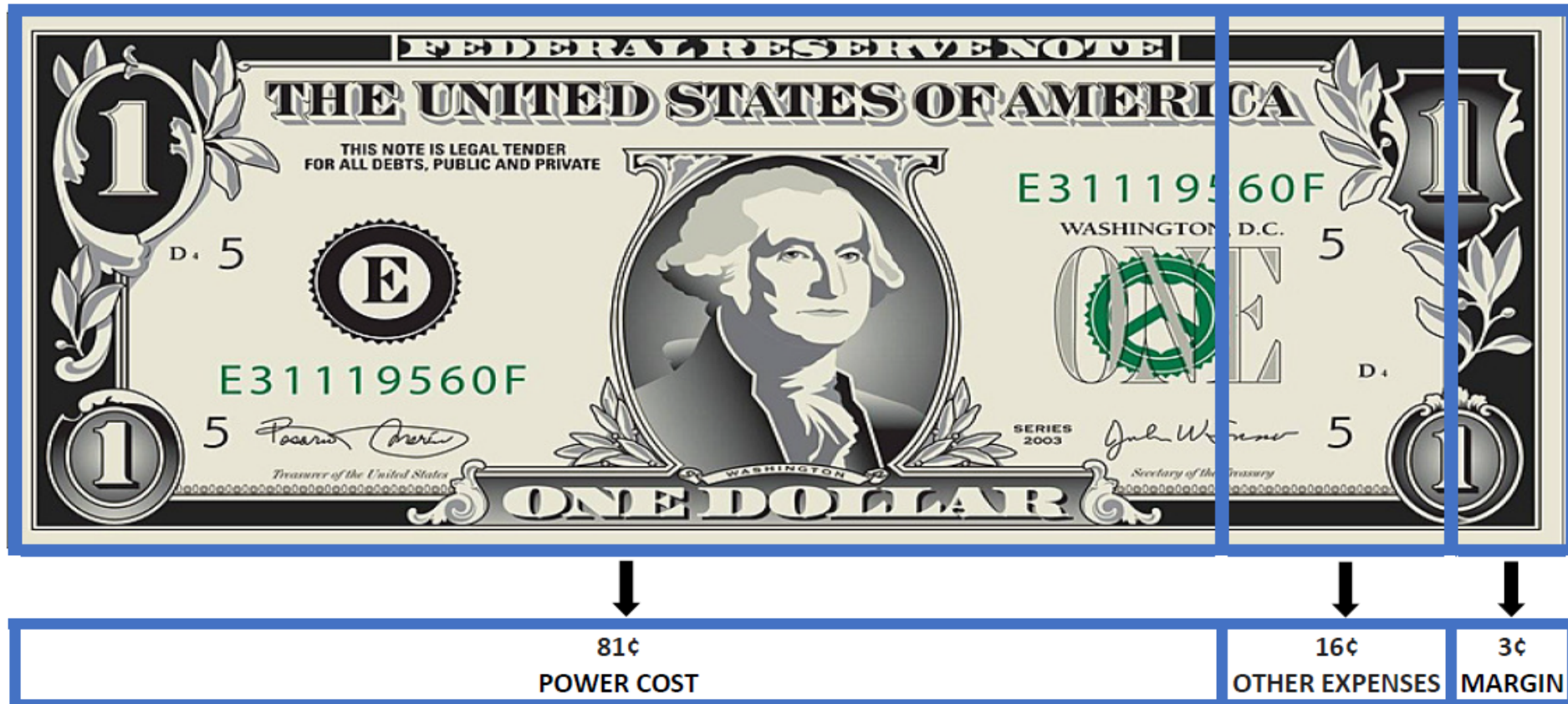


Where does all the Member's Money go?



OWEN ELECTRIC REVENUE DISTRIBUTION

How is the revenue used to keep the lights on?





Where does all the Member's Money go? (cont.)

OWEN ELECTRIC REVENUE DISTRIBUTION

How is the revenue used to keep the lights on?



POWER COST: This includes all expenses paid to East Kentucky Power Cooperative, Owen Electric's wholesale generation and transmission provider.



OTHER EXPENSES: This includes expenses necessary to operate and maintain the Cooperative's 4,700 miles of line and distribution equipment that serves over 67,000 member accounts, as well as other administrative expense, depreciation expense, and interest expense, etc.



MARGINS: This is the revenue that remains after all expenses have been paid. It is considered "patronage capital" and is distributed back to our members in proportion to their patronage.



The logo graphic consists of several overlapping, curved, swoosh-like shapes in various shades of blue, creating a sense of motion and speed. These shapes are positioned behind the company name.

OWEN *Electric*

CORPORATE SERVICES

Board Report

March 2025

Corporate Services Calendar



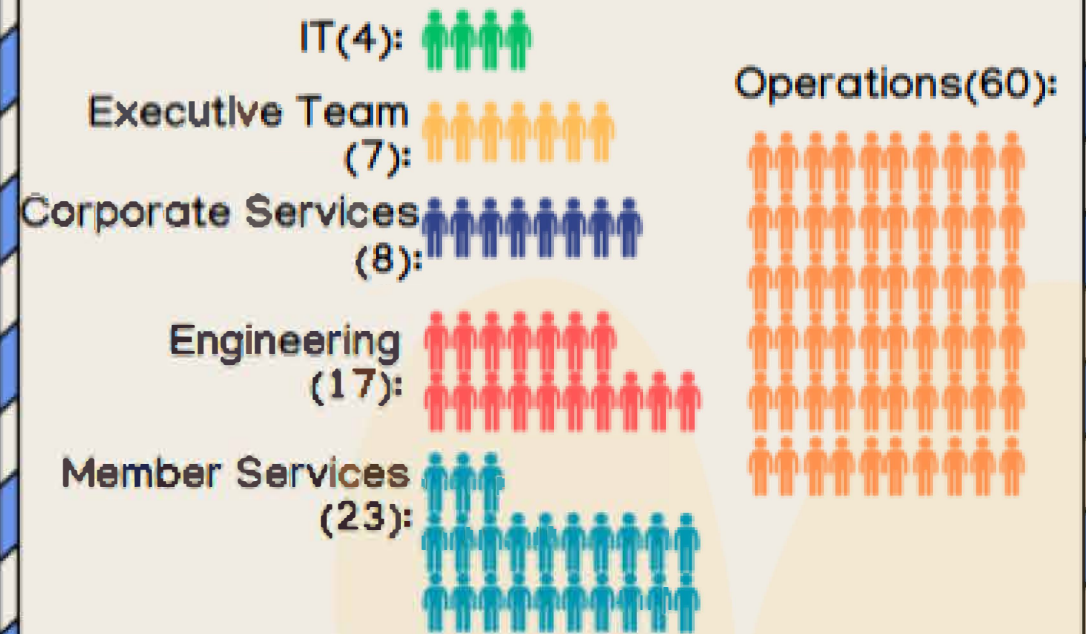
- **March 1:** Employee Performance Reviews Completed
- **March 5:** Auditors onsite to review 2024 financials
- **March 14:** Signed proposal from Gannett Fleming to move forward with Depreciation Study
- **March 20:** Employee, Safety & Awards Day
- **March 31:** Form 7, Form 1, PSC Report (2024 Year End Reports Due)
- **April 17:** Wage & Audit Committee Meeting to review 2024 Audit
- **April 30:** EIA, Property Taxes (2024 Year End Reports Due)
- **May 15:** Form 990(2024 Year End Reports Due)

SAFETY & HUMAN RESOURCES

JOB OPENINGS

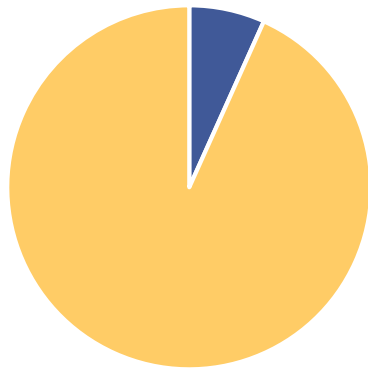
- * GIS Technician
- * IT Helpdesk
- * Lineman

EMPLOYEES BY DEPT.



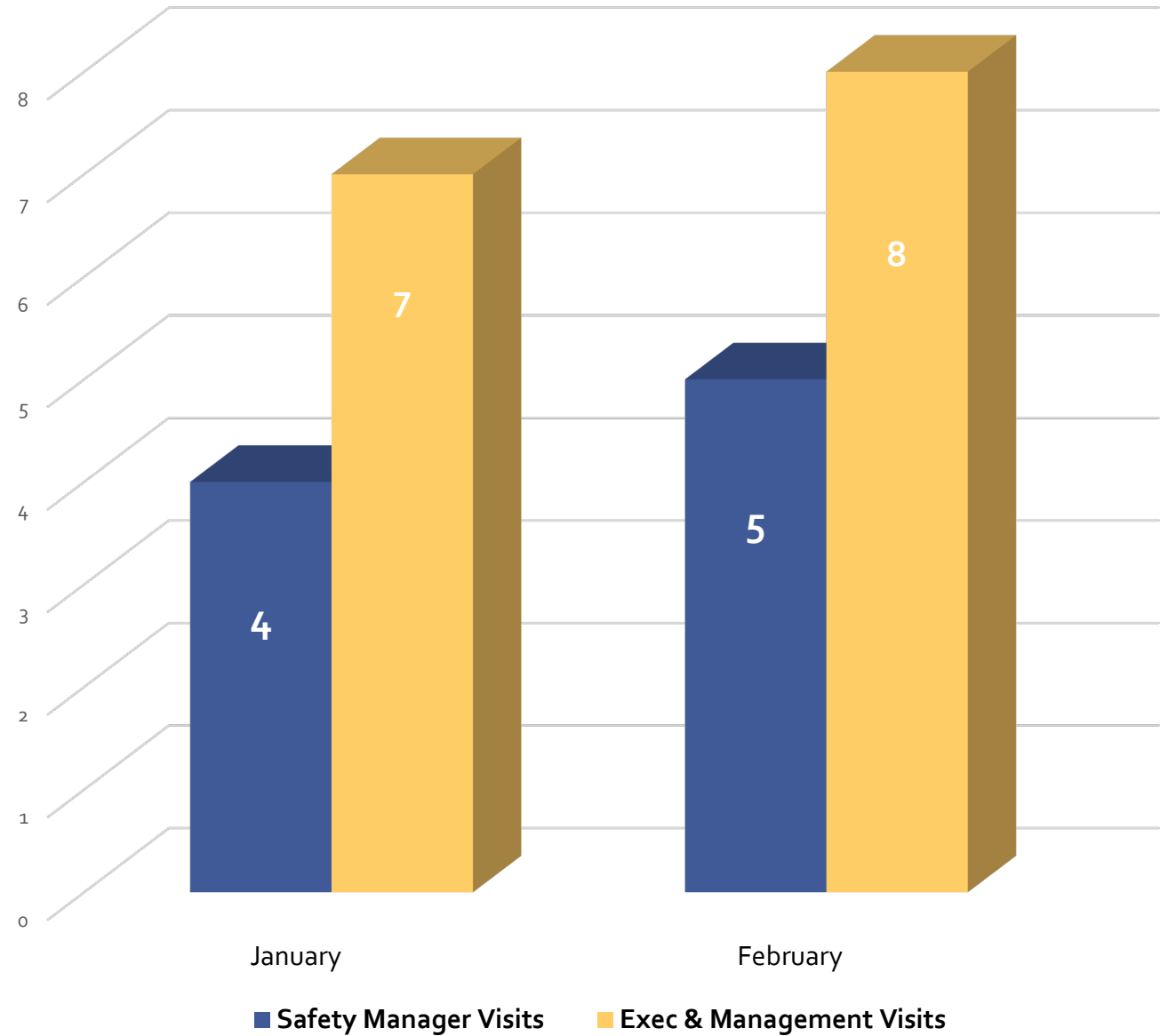


Annual Employee Safety Suggestions



■ Complete ■ Incomplete

Crew Visits by Month



ACCOUNTING

Financials will be provided at the board meeting

YTD Revenue

\$50,612,117

14.6% INCREASE  \$6,441,126

Compared to Jan-Feb 2024

YTD Power Cost

\$42,506,411

15.2% INCREASE  \$5,620,210

Compared to Jan-Feb 2024

YTD Margins

\$1,439,871

41.6% INCREASE  \$423,285

Compared to Jan-Feb 2024

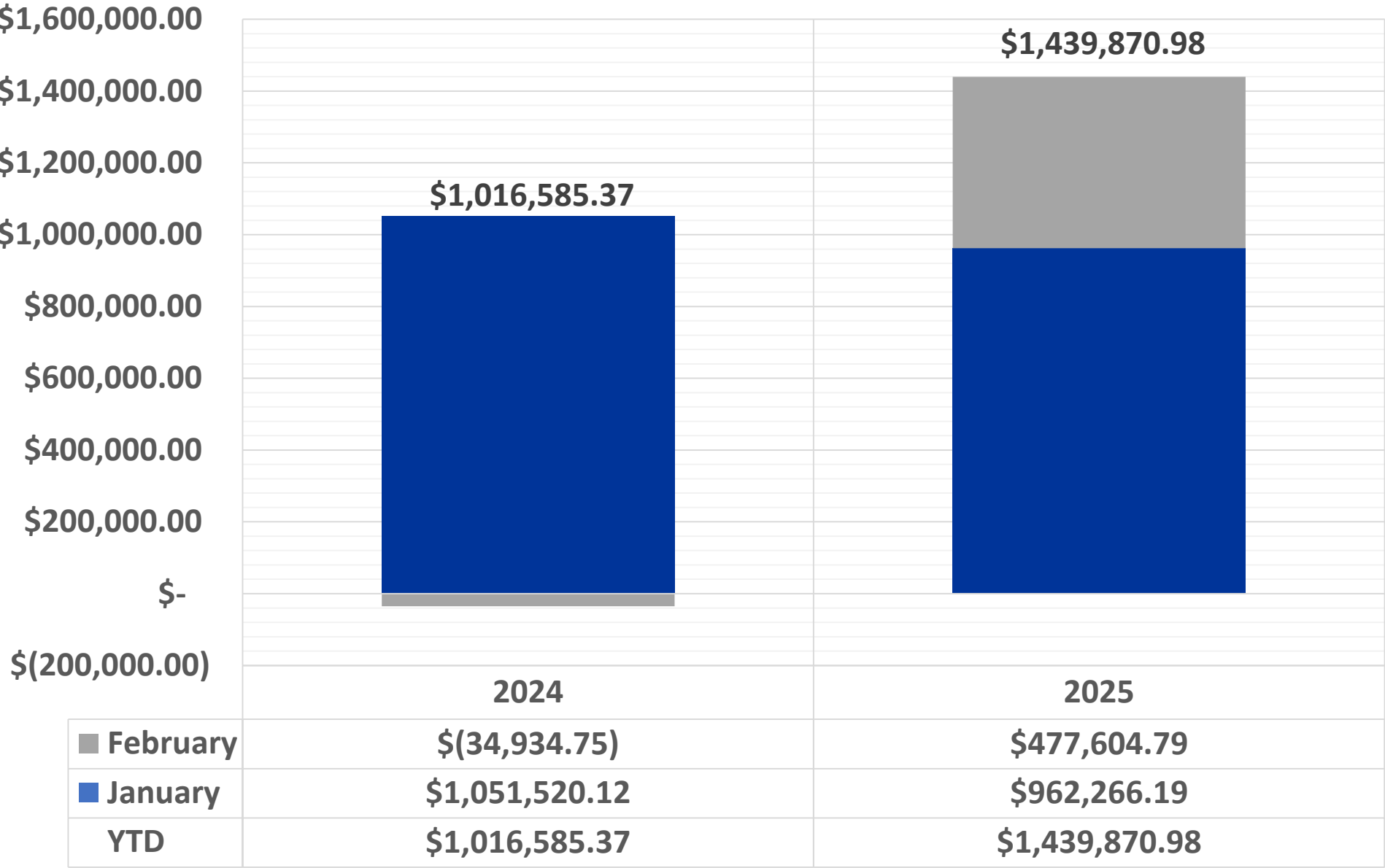
YTD Other Expenses

\$6,839,104

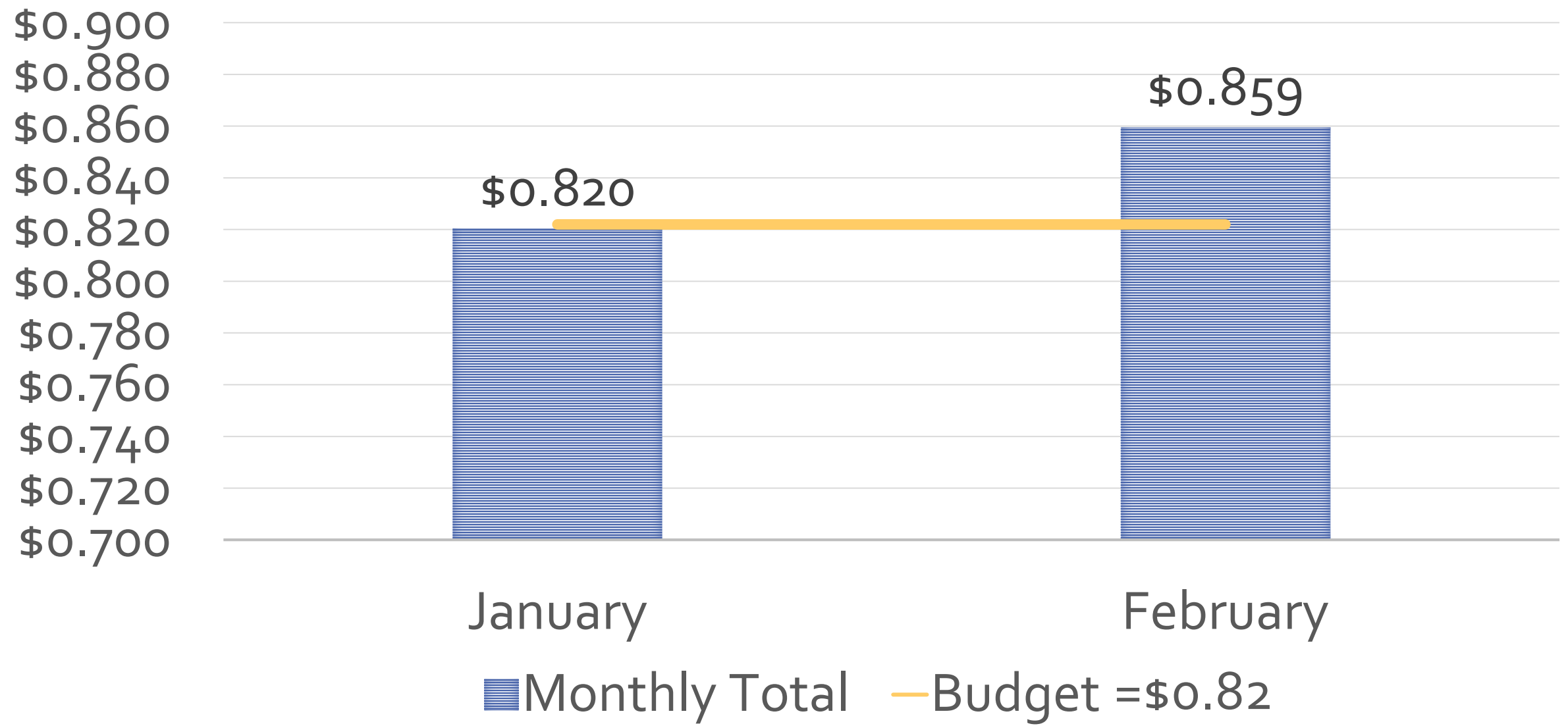
3.5% INCREASE  \$233,620

Compared to Jan-Feb 2024

Net Margins



POWER COST TO REVENUE



Ratio Analysis	2025 YTD	Benchmark
TIER	3.40	1.25
OTIER	3.12	1.10
Distribution Equity	33.83%	20%-35%
Equity Ratio	54.77%	>27%
Current Ratio	1.51	>1.0
Days of Cash on Hand	152	100

Temporary Investments-Board Policy 318			Feb-25		
Note Number	Principal Amount	Interest Rate	Maturity Date	Term in Days	Interest Earnings
Medium Term	\$5,000,000.00	5.61%	5/15/2025	304	\$233,621.92
Select Note	\$3,000,000.00	5.37%	3/13/2025	210	\$92,687.67
Select Note	\$3,000,000.00	4.69%	7/18/2025	270	\$104,079.45
Select Note	\$2,000,000.00	4.37%	9/12/2025	240	\$57,468.49
Total Principal \$13,000,000.00				Total Interest at Maturity	\$487,857.53
CFC Commercial Paper			Various	3.83% - 4.010%	Total Interest at Maturity \$25,160.53

PART A. STATEMENT OF OPERATIONS

LINE NO		----- YEAR TO DATE -----				% FROM BUDGET	% CHANGE FROM LAST YEAR
		LAST YEAR A	THIS YEAR B	BUDGET C	THIS MONTH D		
1.0	OPERATING REVENUE & PATRONAGE CAPITAL....	44,170,991.36	50,612,117.62	46,156,907.31	25,190,534.16	9.7	14.6
2.0	POWER PRODUCTION EXPENSE.....	61,766.90-	1,973.81-	70,751.00-	914.37-	97.2-	96.8-
3.0	COST OF PURCHASED POWER.....	36,824,434.00-	42,504,438.00-	35,958,527.01-	21,649,489.00-	18.2	15.4
4.0	TRANSMISSION EXPENSE.....	.00	.00	.00	.00	.0	.0
5.0	REGIONAL MARKET OPERATIONS EXPENSE.....	.00	.00	.00	.00	.0	.0
6.0	DISTRIBUTION EXPENSE-OPERATION.....	1,053,699.16-	1,048,339.98-	980,432.64-	473,317.73-	6.9	.5-
7.0	DISTRIBUTION EXPENSE-MAINTENANCE.....	1,078,567.10-	1,174,727.89-	1,256,806.26-	527,572.04-	6.5-	8.9
8.0	CONSUMER ACCOUNTS EXPENSE.....	760,646.37-	741,124.89-	659,638.52-	321,358.93-	12.4	2.6-
9.0	CUSTOMER SERVICE & INFORMATIONAL EXPENSE.	145,499.68-	144,369.91-	149,764.18-	59,074.06-	3.6-	.8-
10.0	SALES EXPENSE.....	.00	.00	.00	.00	.0	.0
11.0	ADMINISTRATIVE & GENERAL EXPENSE.....	939,771.05-	957,594.44-	1,000,359.96-	394,738.00-	4.3-	1.9
12.0	TOTAL OPERATIONS & MAINTENANCE EXPENSE...	40,864,384.26-	46,572,568.92-	40,076,279.57-	23,426,464.13-	16.2	14.0
13.0	DEPRECIATION & AMORTIZATION EXPENSE.....	2,088,162.96-	2,152,167.73-	2,123,436.18-	1,076,880.62-	1.4	3.1
14.0	TAX EXPENSE - PROPERTY & GROSS RECEIPTS..	.00	.00	.00	.00	.0	.0
15.0	TAX EXPENSE - OTHER.....	.00	.00	.00	.00	.0	.0
16.0	INTEREST ON LONG TERM DEBT.....	505,889.36-	598,720.52-	583,645.41-	287,113.76-	2.6	18.4
17.0	INTEREST CHARGED TO CONSTRUCTION - CREDIT	.00	.00	.00	.00	.0	.0
18.0	INTEREST EXPENSE - OTHER.....	23,584.43-	14,458.37-	18,689.16-	6,658.31-	22.6-	38.7-
19.0	OTHER DEDUCTIONS.....	9,663.73-	7,600.53-	11,333.32-	3,348.20-	32.9-	21.3-
20.0	TOTAL COST OF ELECTRIC SERVICE.....	43,491,684.74-	49,345,516.07-	42,813,383.64-	24,800,465.02-	15.3	13.5
=====							
21.0	PATRONAGE CAPITAL & OPERATING MARGINS....	679,306.62	1,266,601.55	3,343,523.67	390,069.14	62.1-	86.5
22.0	NON OPERATING MARGINS - INTEREST.....	213,508.89	173,258.43	214,999.98	87,530.15	19.4-	18.9-
23.0	ALLOW. FOR FUNDS USED DURING CONSTRUCTION	.00	.00	.00	.00	.0	.0
24.0	INCOME (LOSS) FROM EQUITY INVESTMENTS....	.00	.00	.00	.00	.0	.0
25.0	NON OPERATING MARGINS - OTHER.....	123,769.86	11.00	.00	5.50	100.0	100.0-
26.0	GENERATION & TRANSMISSION CAPITAL CREDITS	.00	.00	.00	.00	.0	.0
27.0	OTHER CAPITAL CREDITS & PATRONAGE DIVID..	.00	.00	.00	.00	.0	.0
28.0	EXTRAORDINARY ITEMS.....	.00	.00	.00	.00	.0	.0
29.0	PATRONAGE CAPITAL OR MARGINS.....	1,016,585.37	1,439,870.98	3,558,523.65	477,604.79	59.5-	41.6


PART C. BALANCE SHEET

LINE NO	ASSETS AND OTHER DEBITS		LIABILITIES AND OTHER CREDITS		
1.0	TOTAL UTILITY PLANT IN SERVICE	365,880,394.17	30.0	MEMBERSHIPS	1,349,980.00-
2.0	CONSTRUCTION WORK IN PROGRESS	1,073,668.80	31.0	PATRONAGE CAPITAL	157,020,904.48-
3.0	TOTAL UTILITY PLANT	366,954,062.97	32.0	OPERATING MARGINS - PRIOR YEAR	5,739,447.98-
4.0	ACCUM PROV FOR DEP & AMORT	195,660,865.51-	33.0	OPERATING MARGINS-CURRENT YEAR	.00
5.0	NET UTILITY PLANT	171,293,197.46	34.0	NON-OPERATING MARGINS	2,688,974.90-
6.0	NON-UTILITY PROPERTY (NET)	.00	35.0	OTHER MARGINS & EQUITIES	10,001,022.03-
7.0	INVEST IN SUBSIDIARY COMPANIES	.00	36.0	TOTAL MARGINS & EQUITIES	176,800,329.39-
8.0	INV IN ASSOC ORG - PAT CAPITAL	102,159,795.70	37.0	LONG TERM DEBT - RUS (NET)	78,603,570.39-
9.0	INV IN ASSOC ORG OTHR GEN FND	.00		(PAYMENTS-UNAPPLIED	.00)
10.0	INV IN ASSOC ORG - NON GEN FND	1,367,220.98	38.0	LNG-TERM DEBT-FFB-RUS GUAR	.00
11.0	INV IN ECON DEVEL PROJECTS	.00	39.0	LONG-TERM DEBT OTHER-RUS GUAR	.00
12.0	OTHER INVESTMENTS	15,775.35	40.0	LONG TERM DEBT - OTHER (NET)	24,392,529.29-
13.0	SPECIAL FUNDS	27,004.29	41.0	LNG-TERM DEBT-RUS-ECON DEV NET	.00
14.0	TOT OTHER PROP & INVESTMENTS	103,569,796.32	42.0	PAYMENTS - UNAPPLIED	.00
15.0	CASH - GENERAL FUNDS	2,944,855.52	43.0	TOTAL LONG TERM DEBT	102,996,099.68-
16.0	CASH - CONSTRUCTION FUND TRUST	.00	44.0	OBLIGATION UNDER CAPITAL LEASE	.00
17.0	SPECIAL DEPOSITS	1,450.00	45.0	ACCUM OPERATING PROVISIONS	11,505,344.15-
18.0	TEMPORARY INVESTMENTS	13,181,408.07	46.0	TOTAL OTHER NONCURR LIABILITY	11,505,344.15-
19.0	NOTES RECEIVABLE (NET)	.00	47.0	NOTES PAYABLE	.00
20.0	ACCTS RECV - SALES ENERGY (NET)	24,548,904.27	48.0	ACCOUNTS PAYABLE	22,786,874.90-
21.0	ACCTS RECV - OTHER (NET)	343,511.88	49.0	CONSUMER DEPOSITS	2,095,278.92-
22.0	RENEWABLE ENERGY CREDITS	.00	50.0	CURR MATURITIES LONG-TERM DEBT	.00
23.0	MATERIAL & SUPPLIES-ELEC & OTH	2,195,847.68	51.0	CURR MATURIT LT DEBT ECON DEV	.00
24.0	PREPAYMENTS	651,582.67	52.0	CURR MATURITIES CAPITAL LEASES	.00
25.0	OTHER CURRENT & ACCR ASSETS	1,258,933.01	53.0	OTHER CURRENT & ACCRUED LIAB	4,915,180.33-
26.0	TOTAL CURRENT & ACCR ASSETS	45,126,493.10	54.0	TOTAL CURRENT & ACCRUED LIAB	29,797,334.15-
27.0	REGULATORY ASSETS	2,569,811.82	55.0	REGULATORY LIABILITIES	.00
28.0	OTHER DEFERRED DEBITS	255,457.74	56.0	OTHER DEFERRED CREDITS	1,715,649.07-
29.0	TOTAL ASSETS & OTHER DEBITS	322,814,756.44	57.0	TOTAL LIABILITIES & OTH CREDIT	322,814,756.44-

MEMBER SERVICES REPORT

MARCH 27, 2025



A Touchstone Energy Cooperative 





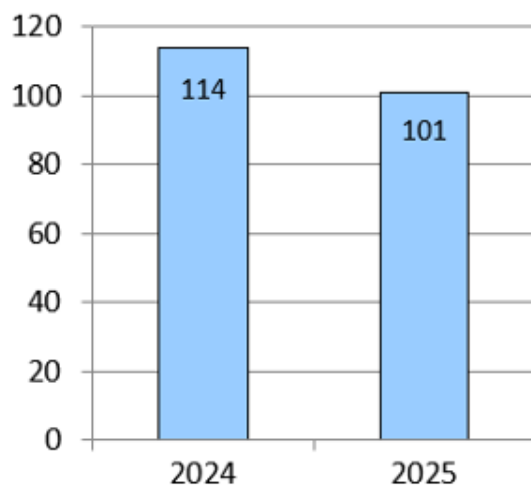
February 2025 Statistics

Member Account Activity	Current Month 2025	Last Month 2025	Same Period Last Year 2024
Bank Deposits	\$15,889,969.55	\$15,184,287.71	\$14,509,100.71
Accounts Billed	67,281	67,222	66,247
Total Billing (Excluding Taxes)	\$15,655,508.67	\$15,875,355.27	\$13,543,457.40
Delinquent Notices Mailed	8,379	10,075	8,737
Total Delinquent Amount	\$1,948,061.70	\$2,042,172.71	\$2,804,676.32
Total Penalty Amount	\$95,716.63	\$77,078.28	\$139,955.66
Number of Arrangements	1,588	1,686	1,337
Total Amount of Arrangements	\$465,375.99	\$366,810.95	\$365,800.27
Return Check Amount	\$26,405.70	\$22,521.38	\$25,778.26
Number of Return Checks	96	127	106
Office Pymts (Walk-in & Drive-thru)	2,673	2,964	2,781
Cutoff Tickets	1,586	1,463	1,450
Actual Cutoffs	461	434	694
New Accounts Set Up	436	508	469
Service Orders	2,119	2,069	2,621
Calls Answered by Member Services Reps	8,580	9,824	8,564
Telelink Calls	25,580	27,536	23,610
Member Services Collection Program	\$3,372.24	\$3,509.37	\$5,456.38
Total Collections by Member Services	\$1,091,899.04		

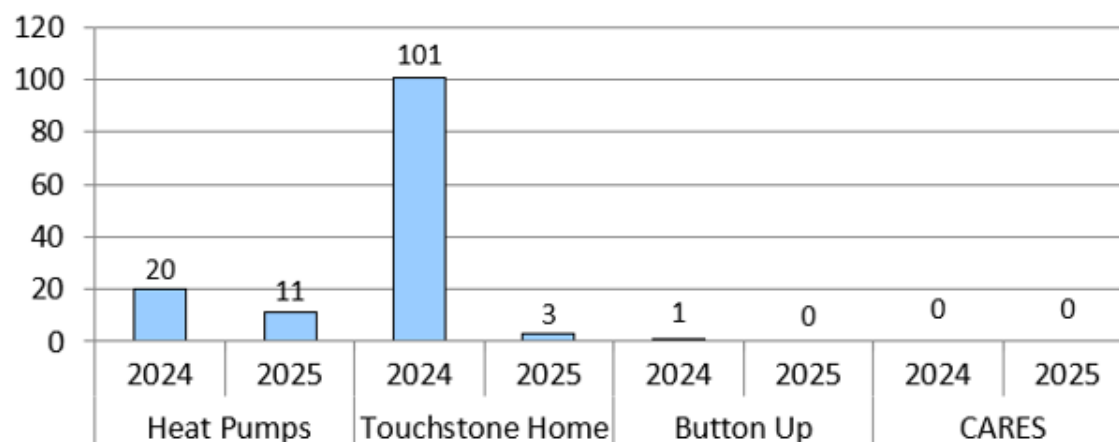
*		FEBRUARY '25	JANUARY '25	FEBRUARY '24
	COINCIDENT PEAK (kW)	261,822	343,826	230,188
	ENERGY (kWh MEASURED @ SUBS)	126,744,988	160,282,931	109,843,019
	AVERAGE TEMPERATURE (MEASURED @ CVG)	34.1°	25.5°	42.7°
	B RATE TOTALS (kW) & PERCENTAGE OF TOTAL LOAD	29,516 11.27%	30,539 8.88%	25,568 11.11%

*does not include Nucor

**Energy Audits
(Year to Date)**



**Summary of Residential Energy Efficiency Incentives
Paid
(Year to Date)**



Direct Load Control (Simple Saver DSM Program)

	Monthly Activity		Program Total	
	Installations	Removals		
HVAC	0	-2	HVAC	2,491
Water Heater	0	-1	Water Heater	1,558
Thermostat	9	0	Thermostat	1,334
Totals	9	-3	Totals	5,383



Frankfort Youth Tour

DELEGATES FOR WASHINGTON YOUTH TOUR

AVA HEGGE,
WILLIAMSTOWN HIGH SCHOOL
(FRONT, SECOND FROM LEFT)

GABRIELLA MACADAMS,
WILLIAMSTOWN HIGH SCHOOL
(BACK, SECOND FROM RIGHT)

MASEN CHANDLER,
CARROLL COUNTY HIGH SCHOOL
(BACK, THIRD FROM RIGHT)





Chamber of
Commerce

BUSINESS IN NORTHERN KENTUCKY IS ELECTRIFYING.

Owen Electric Cooperative is Northern Kentucky's partner in power. For over 80 years, we've been helping businesses grow and thrive in our region.

Come build a great life with us right here in our old Kentucky home.



A Touchstone Energy Cooperative

www.owenelectric.com

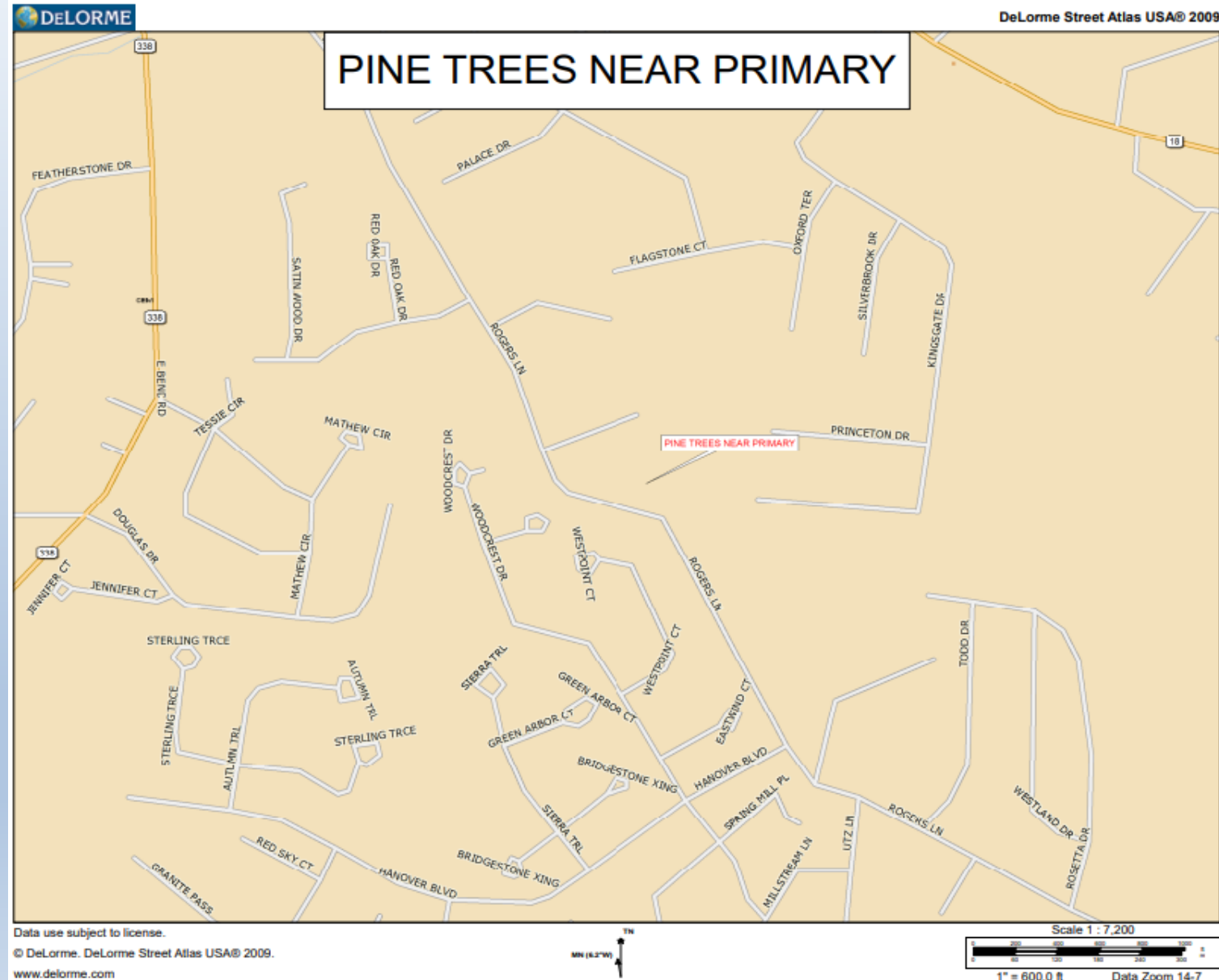




Operations Board Report

March 2025

- Jeffrey Moore
 - PSC Inspector
 - Week of Feb 25th – 28th
- Vegetation & Maintenance Inspection - 2025
 - Visual Inspection
 - All accessible substations
 - ROW
 - Maintenance practices
 - 2 circuits trimmed in 2024
 - 19-03 & 25-03
 - 2 circuits due to be trimmed in 2025
 - 05-02 & 51-09



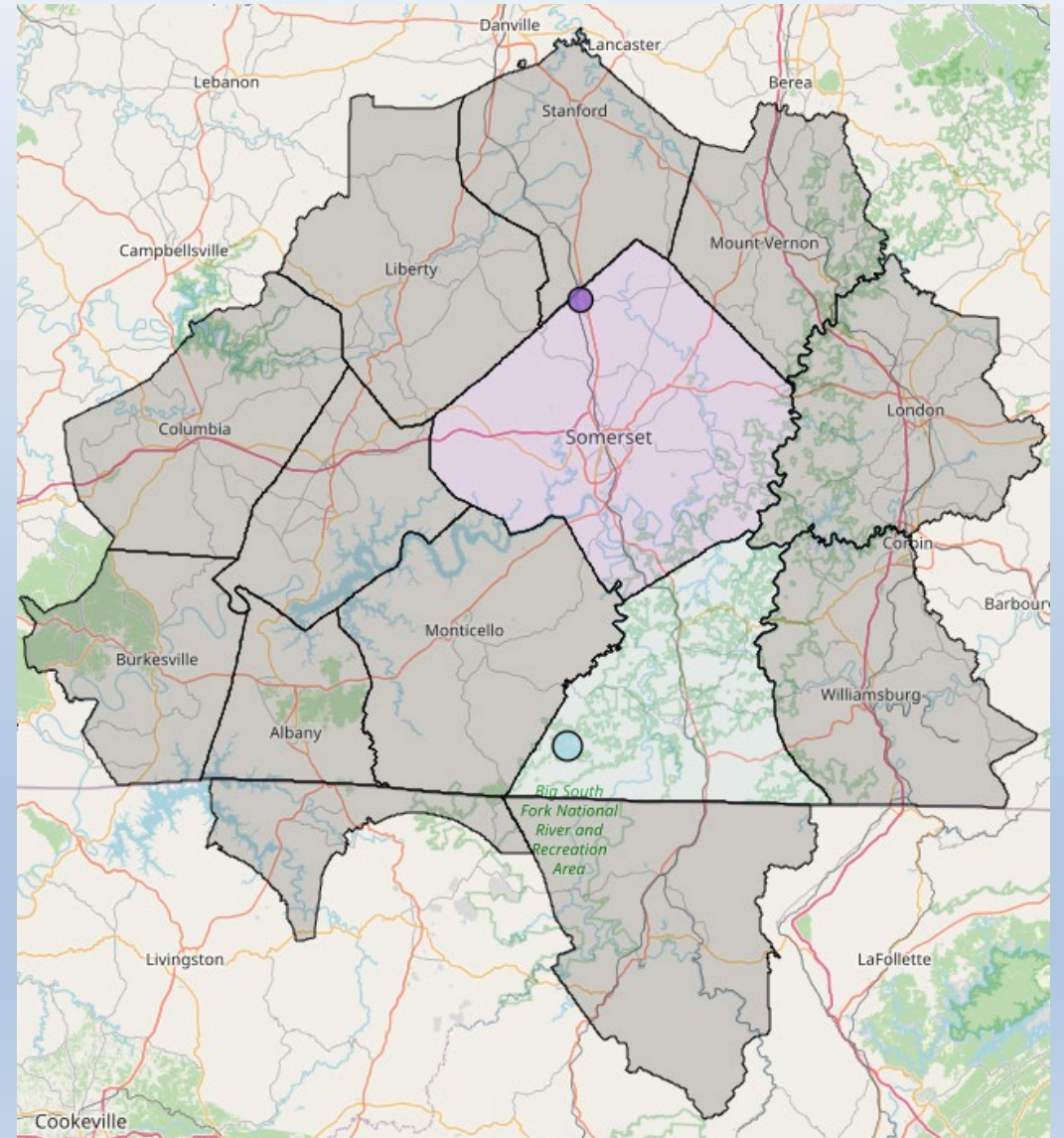
Facilities

- 2025 Facilities Budget
- HQ Pole yard expansion
 - 53,000 square ft.
 - 4000 ton of gravel
 - Due to start May 2025
- Received 5 bids
 - Phase 2 – Building addition - TBD



Mutual Aid

- South Kentucky RECC – Somerset, Ky.
 - March 5th – 7th
 - 8 Lineman – (2) Construction Crews
 - Simon Peters, Jordan Alford, Josh Hearn, Micah Duvall, James Juett, John Lilly, Evan Meenach, John Hurley



A close-up photograph of a network switch or patch panel. Numerous blue Ethernet cables are plugged into the ports, creating a dense, organized array. The cables are bundled together, and many have white labels attached. In the background, several rows of small, glowing yellow LEDs are visible, indicating active network connections. The overall lighting is dim, with the primary light source being the switch's indicator lights.

Technology Report

March 2025

Engineering

Andrew Long



Engineering Update Reliability Indices

2024 Reliability KPIs

	Q1	Q2	Q3	Q4	YTD	
SAIDI	6.130				6.130	THRESHOLD
SAIFI	0.080				0.080	TARGET
MED	0				0	STRETCH

- Had a few longer duration outages and several storm events in Feb.
- The strong January start still has us on pace to meet Stretch for Q1.

Mineola Substation and Hebron/Downing 795 Tie

Mineola Substation

- Grading to begin in June and completion 12/31/2025
- Installing 69-12/16/20 MVA transformer



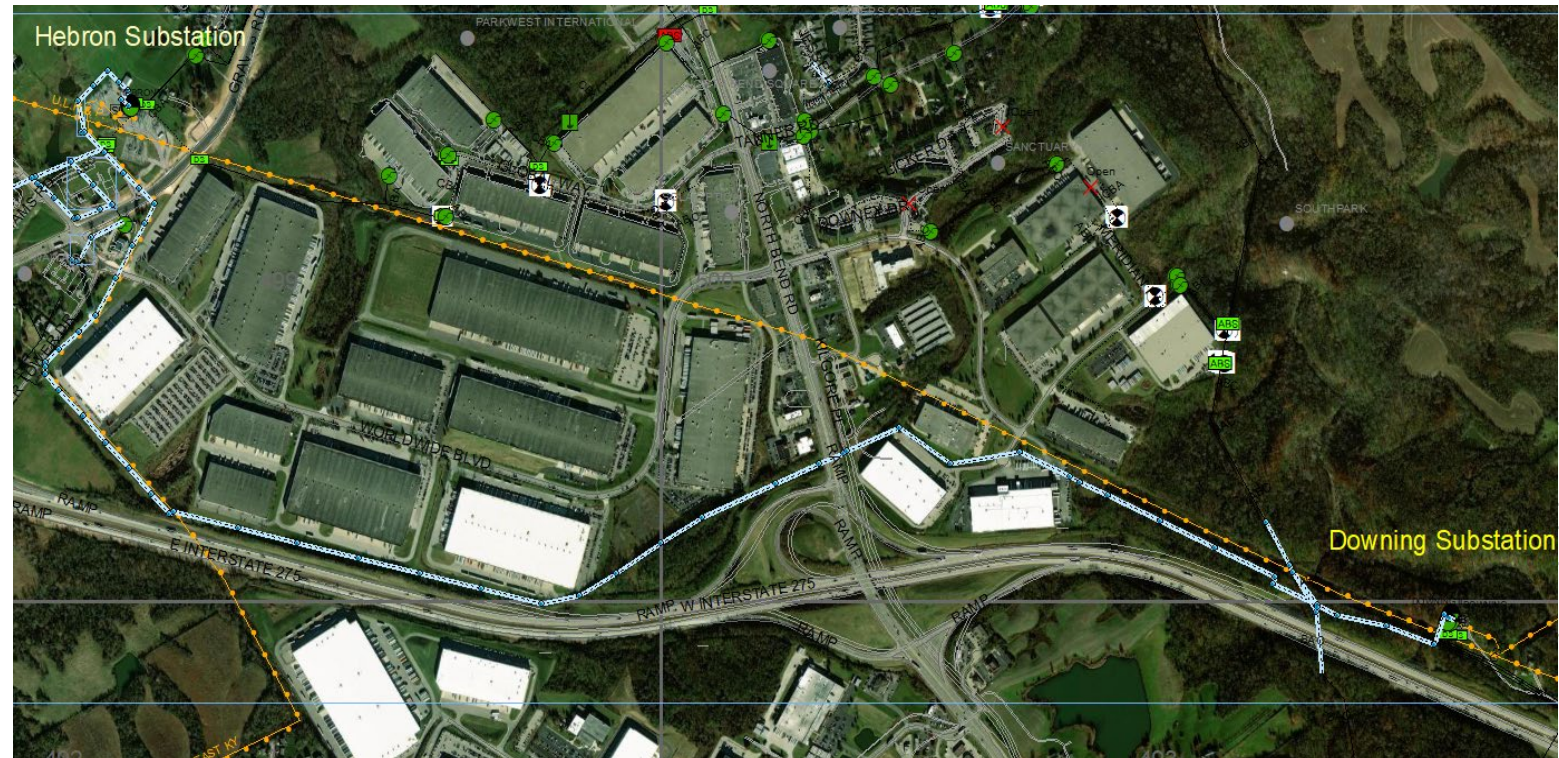
- EKPC currently building 69 kV using 556 ACSR/TW 7.8 miles from Hebron to the new Mineola site

Mineola Substation and Hebron/Downing 795 Tie



Mineola Substation and Hebron/Downing 795 Tie

- Owen to build 3 miles of 795 ACSR along the new EKPC 69 kV line
- New line to assist in feeding South Park, which is in challenging terrain and prone to flooding
- Will serve new load in the area and create a tie between Downing and Hebron



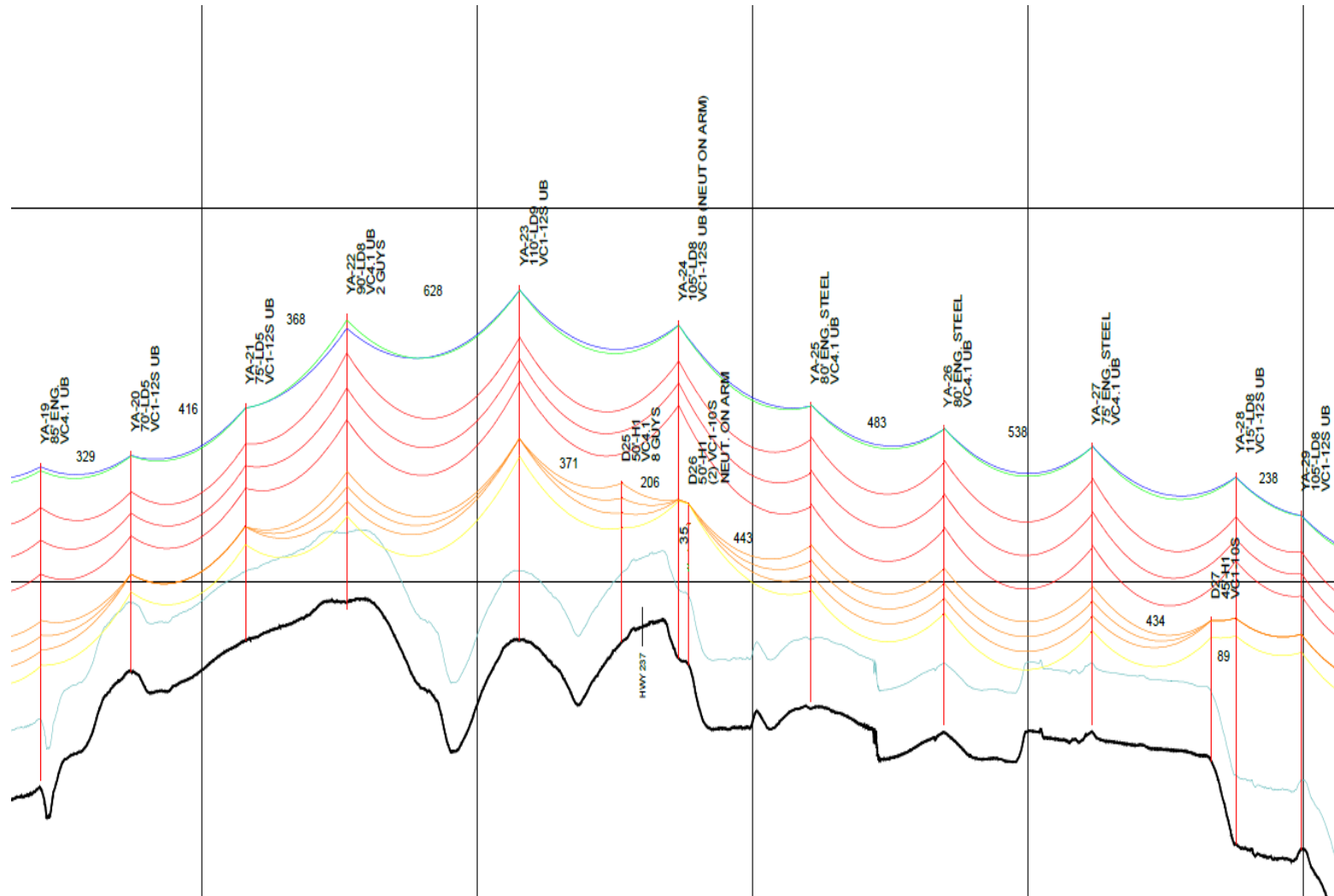
Mineola Substation and Hebron/Downing 795 Tie

- Owen performed a rolling road block on I-275 as part of the 795 build.
- 10 MAS vehicles, 6 law enforcement
- Sunday morning between 6-9am

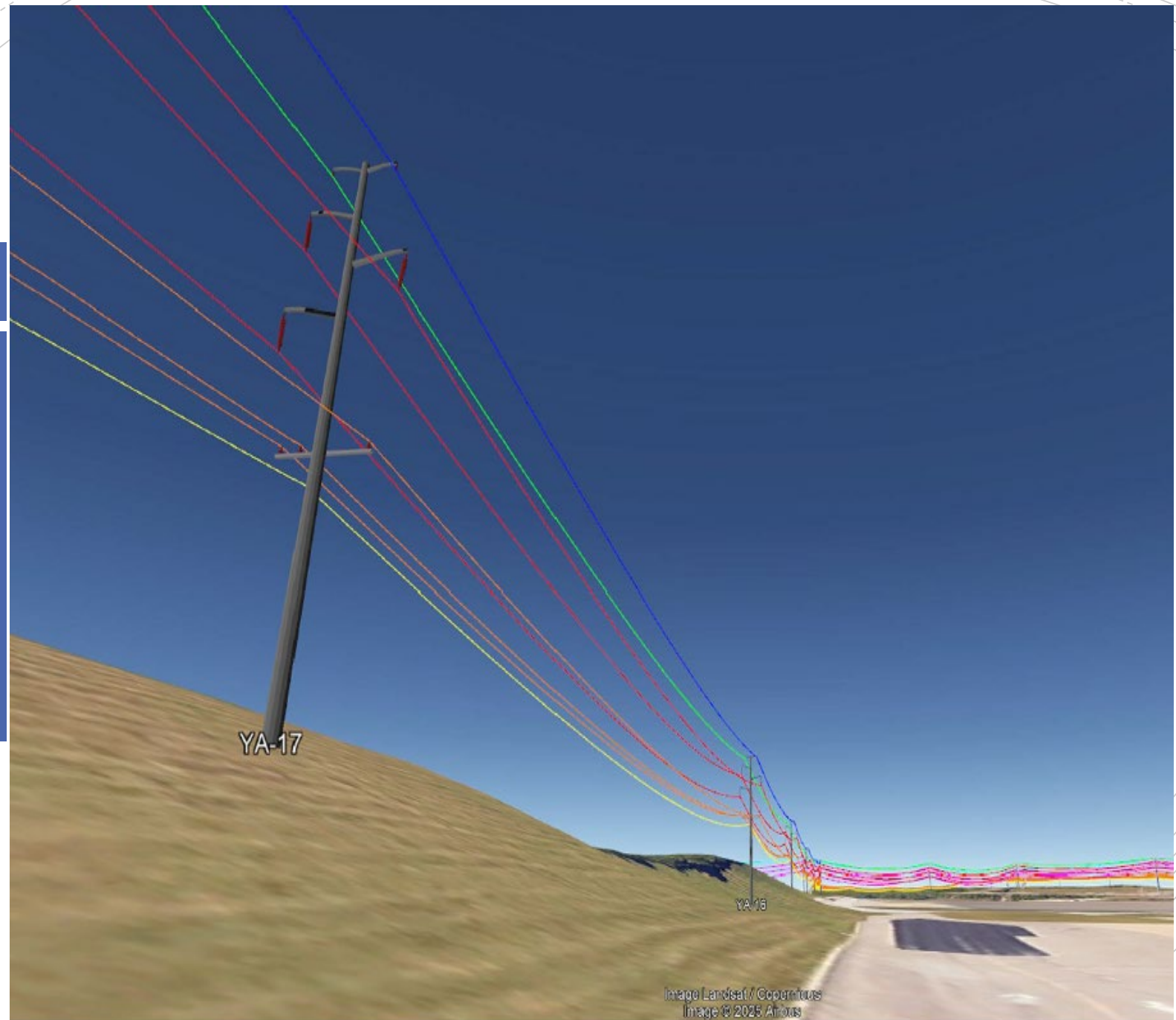


Mineola Substation and Hebron/Downing 795 Tie

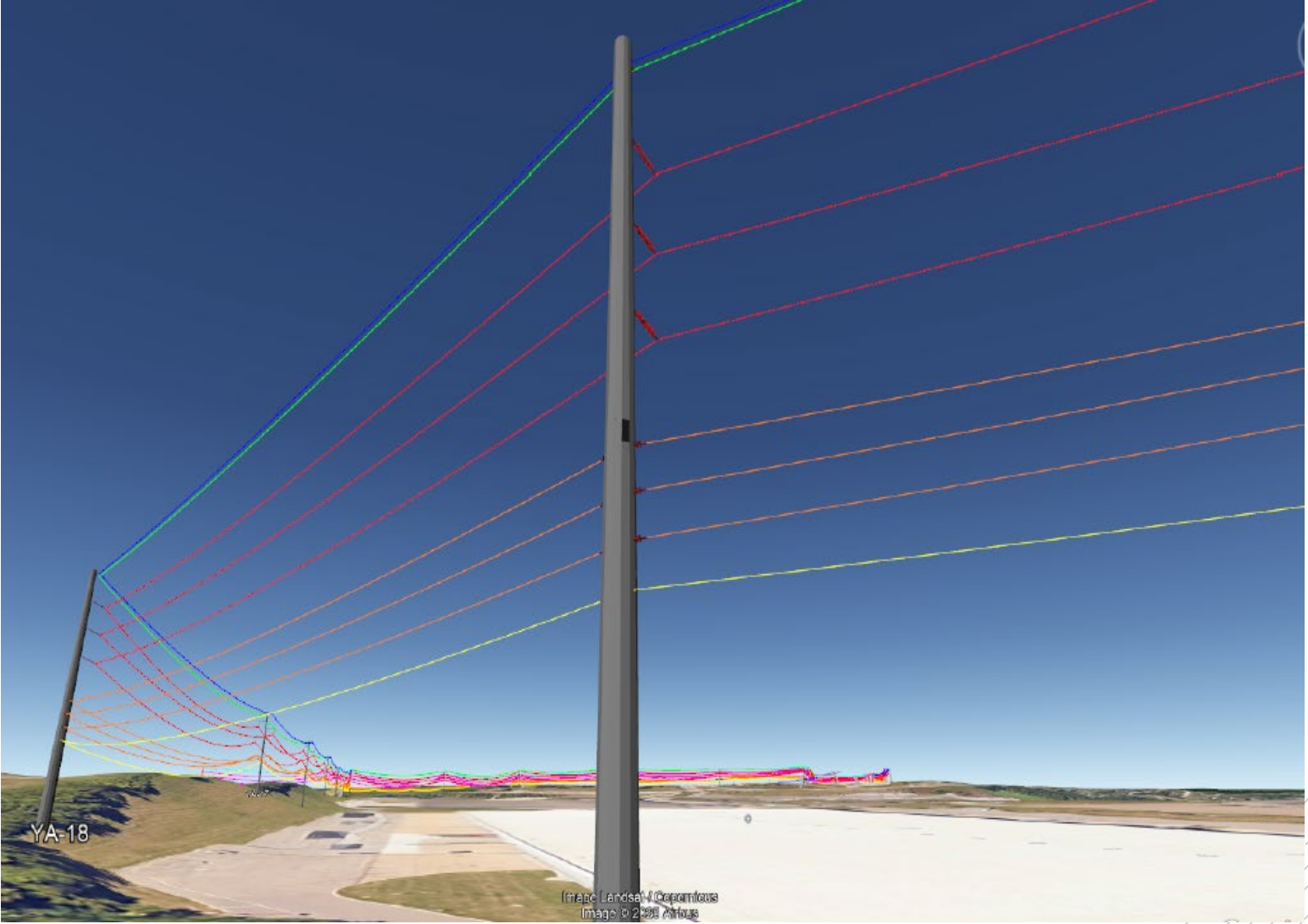
- Design and discussion began in 2020 for the new build
- Secured easements on 27 parcels for the route



Mineola Substation and Hebron/Downing 795 Tie



Mineola Substation and Hebron/Downing 795 Tie



Mineola Substation and Hebron/Downing 795 Tie

- 336 ACSR Merlin conductor .365 lbs/ft
 - 18/1 Aluminum/Steel core
 - RBS 8,600 lbs
 - 519ampacity rating
-
- 795 ACSR Drake conductor 1.094 lbs/ft
 - 26/7 Aluminum/Steel core
 - RBS 31,500 lbs
 - 907 ampacity rating

Review/Discuss/Approve- Board District Review

-Motion: _____

-Approve: _____

Board District Review
3/19/2025

District	Director	County	Members
1	Charlie Richardson	Owen	<u>3,753</u>
2	Eddie McCord	Carroll Gallatin	932 2,514 <u>3,446</u>
3	Robert True	Grant Scott	5,584 1,602 <u>7,186</u>
4	Alan Ahrman	Campbell Pendleton	3,295 2,717 <u>6,012</u>
5	John Grant	S. Boone	<u>11,953</u>
6	Rick Messingschlager	Kenton	<u>12,818</u>
7	Hope Kinman	N. Boone	<u>9,920</u>
		Total	<u>55,088</u>



Review/Discuss/Approve- EKPC Director Nomination2025-2026

-Motion: _____

-Approve: _____

Report Presented By: Alan Ahrman

Report Presented By: Rick Messingschlager

Attorney's Report Presented By: Jake Thompson

Information Agenda

2025/2026 Board Meetings & Training

April 17, 2025-Wage & Audit Committee Meeting, 9:00am, HQ-Owenton, KY (John, Hope, Rick & Alan)
April 24, 2025-Regular Board Meeting, 9:00am, HQ-Owenton, KY
April 27-30, 2025-NRECA Legislative Conference, Washington, DC
May 28, 2025-Regular Board Meeting, 9:00am, HQ-Owenton, KY
June 5-6, 2025-Membership Appreciation Days
June 6, 2025-Annual Business Meeting, 6:00pm, Walton, KY
June 26, 2025-Regular Board Meeting, 9:00am, Owenton, KY
July 31, 2025-Regular Board Meeting, 9:00am, Owenton, KY
August 21, 2025-Regular Board Meeting, 9:00am, HQ-Owenton, KY
August 25-26, 2025-KEC Annual Meeting, Louisville, KY
September 25, 2025-Regular Board Meeting, 9:00am, HQ-Owenton, KY
October 21-23, 2025-NRECA Regional Meeting, Biloxi, Mississippi
October 30, 2025-Regular Board Meeting, 9:00am, HQ-Owenton, KY
November 20, 2025-Regular Board Meeting, 9:00am, HQ-Owenton, KY
December 18, 2025-Regular Board Meeting, 9:00am, HQ-Owenton, KY
March 6-11, 2026-Power Xchange, Nashville, TN
April 26-29, 2026-NRECA Legislative Conference, Washington, DC

Information Agenda

- Conference Reports
 - As needed
- Old Business
- New Business
- Executive Session
- Miscellaneous
- Adjourn
 - Motion _____
 - Second _____