

**OWEN ELECTRIC COOPERATIVE
REGULAR BOARD MEETING
March 26, 2026**

PRESENT The regular meeting of the Board of Directors of Owen Electric Cooperative, Inc., was held at the Headquarters Building in Owenton, Kentucky, on March 26, 2026. All directors were present. Also present were: Mike Cobb, Erin Rehkamp, Mike Stafford, Brian Jones, Jim Petreshock, Andrew Long, Christel Buffin, Attorney Jake A. Thompson.

**CALL TO ORDER,
PLEDGE OF ALLEGIANCE
AND INVOCATION**

The meeting was called to order, and the Pledge of Allegiance and invocation were given by Charlie Richardson and Bob True, respectively.

ADOPTION OF

AGENDA Upon a motion by Charlie Richardson, second by Hope Kingman, the Board voted unanimously to adopt the March 26, 2026, Board Meeting Agenda.

MINUTES

APPROVED Upon a motion by Rick Messingschlager, second by Jim Henning, the February 26, 2026, Regular Board Meeting Minutes and Executive Session Minutes were approved.

**SAFETY
MOMENT**

Jim Petreshock gave the safety moment on lawn mower "Spring Startup" safety and general lawn mower safety.

MEMBER

CONCERNS The Board reviewed and discussed member compliments and concerns.

NEW MEMBERS

**ACCEPTED/
TERMINATED**

ACCOUNTS The Directors then reviewed and accepted the listing of 385 New Members and 266 Terminated Accounts.

**REVIEW OF LISTING OF
TERMINATED ACCOUNTS**

The Directors then reviewed and accepted as information a listing of the terminated accounts for the month.

**REVIEW OF PRESIDENT'S, CONSULTANT'S AND DIRECTORS'
EXPENSES**

The Directors then reviewed and accepted as information a listing of February expenses incurred by the President, Consultant and Directors.

**UNCOLLECTIBLE WRITE-OFFS AND
CAPITAL CREDIT PAYMENT**

The Board reviewed 59 member write-offs of \$9,343.46.

The Board reviewed payment of \$25,033.53 in Capital Credits.

Upon a motion by Hope Kinman, second by Charlie Richardson, the Board voted unanimously to approve the Uncollectible Write-Offs, Capital Credit Payments and Consent Agenda Items.

PRESIDENT/ CEO REPORT

Mike Cobb presented the CEO Report for the month of March, 2026, in accordance with the summary attached hereto and made a part of these minutes.

Mike reviewed with the Board the following:

Property Tax Discussion: Mike discussed with the Board how much property tax OEC pays, and the positive affect on local governments and communities.

Revenue Distribution: Mike discussed OEC's power costs and gross revenue distribution with the Board. Mike also discussed capital credit distributions by OEC and its sister coops.

Strategic Plan Presentation/Review: Mike and staff reviewed all strategic goals, and the Strategic Plan with the Board and led discussion regarding same.

Upon a motion by Charlie Richardson, second by Rick Messingschlager, the Board voted unanimously to adopt the 2026 Strategic Goals and Objectives as presented by Mr. Cobb and staff.

Mike reviewed with the Board, OEC's plan to list the Butler office with a realtor and at what listing price.

CORPORATE SERVICES AND ACCOUNTING

Erin Rehkamp presented the preliminary Corporate Services and Accounting report in accordance with the summary attached hereto and made part of these minutes. Erin reported \$713,041.67 net margins through February 2026. Erin reported the Coop had gone 675 days as of March 26th without a lost time injury. Erin reported the cost of power in February 2026 was \$.859 cents of every dollar of revenue. She also reported TIER levels of 2.24 and OTIER of 2.01 for 2026. Erin reported the Coop currently has 119 full-time employees.

MEMBER SERVICES

Mike Stafford presented the Member Services report for the month in accordance with the summary attached hereto and made part of these minutes. Mike reported accounts billed for the month of February 2026 of 68,546 compared to 67,281 for the same period last year. Mike discussed potential Bylaw changes with the Board as noted in the attached presentation.

OPERATIONS

Brian Jones presented the Operations report for the month in accordance with the summary attached hereto and made part of these minutes, including an update on the PSC line inspection.

TECHNOLOGY

Jim Petreshock presented the Technology report for the month in accordance with the summary attached hereto and made part of these minutes.

ENGINEERING

Andrew Long presented the Engineering report for the month in accordance with the summary attached hereto and made part of these minutes.

ACTION ITEMS

After discussion, upon a motion by Bob True, second by Rick Messingschlager, the Board voted unanimously to reappoint Alan Ahrman to EKPC Director for 2026/2027.

EKPC REPORT

Alan Ahrman, gave the February 2026 EKPC Board meeting report in accordance with the summary and minutes of said meeting prepared by EKPC staff. The actual summary and minutes cannot be attached to these minutes because of the terms of a Confidentiality and Non-Disclosure Agreement EKPC has required the coop's director representative and CEO to sign before being allowed to attend said meetings.

KEC REPORT

Rick Messingschlager presented the February 2026, Kentucky Electric Cooperative's Board Meeting report in accordance with the minutes and summary of said meeting prepared by KEC staff. The actual minutes and summary of the meeting cannot be attached to these minutes at the request of KEC.

ATTY. REP. Jake A. Thompson reported there was no new litigation for the month.

TRAINING/MEETINGS

Audit Committee Meeting – April 20, 2026

NRECA Legislative Conference – April 26-29, 2026

OEC Regular Board Meeting – April 30, 2026

OEC Regular Board Meeting – May 26, 2026

OEC Annual Business Meeting- June 12, 2026

OEC Regular Board Meeting – June 25, 2026

Summer School for Directors – June 26-30, 2026

OEC Regular Board Meeting – July 30, 2026

OEC Regular Board Meeting – August 27, 2026

OEC Regular Board Meeting – September 24, 2026

NRECA Regional Meeting - October 14-16, 2026

OEC Regular Board Meeting – October 29, 2026

OEC Regular Board Meeting – November 19, 2026

Winter School for Directors – December 11-15, 2026

OEC Regular Board Meeting – December 17, 2026

**CONFERENCE
REPORTS** None.

OLD BUSINESS
None.

NEW BUSINESS
None.

ADJOURN Upon a motion by Hope Kinman, second by Eddie McCord, the Board voted unanimously to adjourn the meeting.



Chairman



Secretary



A Touchstone Energy Cooperative 

REGULAR BOARD MEETING

March 26, 2026



Agenda

- Directors Present/Absent
- Call to Order/Pledge of Allegiance/Invocation

Agenda & Minutes

- Adoption of Agenda (Tab 3)
- Approval of Minutes of Previous Meeting (Tab 4)



Safety Moment

Jim Petreshock

Review/Discuss Member Compliments and/or Concerns

Review Agenda

- Review New Members: 385
(Listing on Board Table & in Board Paq)

- Review Listing of Terminated Accounts:
266 Members at \$60,502.61
(Listing on Board Table & in Board Paq)

Review Agenda

**Review of President's,
Directors' and
Consultant Expenses**



Consent Agenda Items

- Approve Uncollectible Member Write-offs:

59 Members at \$9,343.46

(Listing on Board Table and in Board Paq)

- Approve Payment of Capital Credits: \$25,033.53

(Tab 11)

- Approval of Consent Agenda Items

– Motion _____

– Second _____

President/CEO Report
March 26, 2026
Board Meeting

President's Report Topics

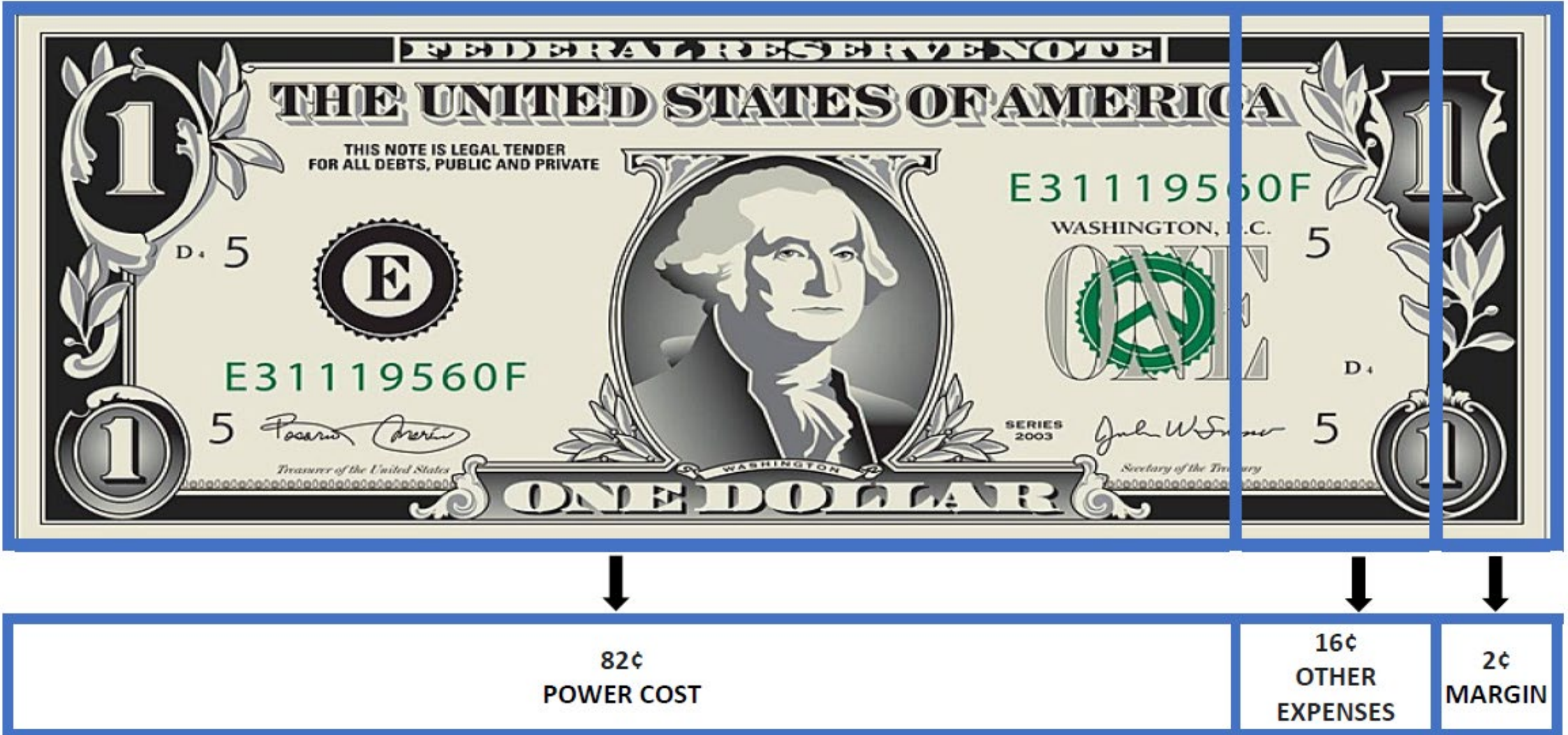
- Property Tax Discussion
- Where Does Owen's Member's Money Go?
- Strategic Plan Presentation / Review



Property Tax 2025

State Tax Assessment	\$ 654,430.51	
County Taxes:		
Boone	\$ 433,313.85	
Campbell	\$ 133,004.78	
Carroll	\$ 47,792.89	
Gallatin	\$ 94,726.46	
Grant	\$ 220,453.53	
Kenton	\$ 178,864.63	
Owen	\$ 332,116.29	
Pendleton	\$ 150,317.44	
Scott	\$ 45,370.63	\$ 45,370.63
Local Taxes		
Boone		
City of Florence	\$ 4,953.65	
City of Union	\$ 25.94	\$ 4,979.59
Grant		
City of Crittenden	\$ 2,232.68	
City of Dry Ridge (2024 & 2025)	\$ 1,660.84	
City of Williamstown	\$ 6,700.21	\$ 10,593.73
Kenton		
City of Independence	\$ 29,768.38	
City of Covington	\$ 3,010.07	
City of Elsmere	\$ 686.06	
City of Erlanger	\$ 3,241.77	\$ 36,706.28
Owen		
City of Owenton	\$ 449.50	\$ 449.50
Gallatin		
City of Warsaw	\$ 29.10	
City of Sparta	\$ 658.28	
City of Glencoe	\$ 385.27	\$ 1,072.65
Pendleton		
City of Butler (estimate)	\$ 20.00	\$ 20.00
Carroll		
City of Ghent	\$ 11,887.72	\$ 11,887.72
Scott		
City of Georgetown	\$ 303.97	\$ 303.97
TOTAL	\$ 2,356,404.45	

Where does the Member's money go?



Where does all the Member's Money go? (cont.)

OWEN ELECTRIC REVENUE DISTRIBUTION

How is the revenue used to keep the lights on?



POWER COST: This includes all expenses paid to East Kentucky Power Cooperative, Owen Electric's wholesale generation and transmission provider.



OTHER EXPENSES: This includes expenses necessary to operate and maintain the Cooperative's 4,700 miles of line and distribution equipment that serves over 67,000 member accounts, as well as other administrative expense, depreciation expense, and interest expense, etc.



MARGINS: This is the revenue that remains after all expenses have been paid. It is considered "patronage capital" and is distributed back to our members in proportion to their patronage.





Strategic Goals and Objectives 2026

MISSION & VISION

As a member-owned cooperative, **Our Pledge** is to be accountable to our membership and embrace that they deserve our best efforts.

Our Mission is to strengthen our communities and improve our members' lives by providing safe, reliable and affordable electric service.

Our Vision is to lead the utility industry by being an innovative and trusted source of energy solutions for our members.



2026 STRATEGIC PLAN

These seven strategic goals embody the pillars of Owen Electric's intentional focus for 2026 and beyond.



Sustain & Advance
a Culture of Safety
Across the
Cooperative



Enhance System
Reliability Through
Technical Innovation &
Infrastructure
Hardening



Strengthen
Cybersecurity &
Enterprise Risk
Management



Advance Financial
Planning & Future Rate
Design Through
Forecasting, Analytics
& Education



Strengthen
Business
Continuity &
Disaster Recovery
Preparedness



Strengthen Member
Engagement &
Governance Through
Enhanced
Communication, Annual
Meetings & Board
Election Processes



Enhance Employee
Development Through
Robust Onboarding,
Education &
Succession Planning

Strategic Goal 1 - Advance Financial Planning and Future Rate Design through Forecasting, Analytics, and Member Education

- Implement long-term financial forecasting
- Prepare for future rate design
- Leverage AMI and data analytics
- Foster departmental collaboration.

Strategic Goal 2 - Enhance System Reliability Through Technological Innovation and Infrastructure Hardening

- Analyze reliability trends
- Strengthen vegetation management & ROW
- Expand technology for outage management
- Leverage AI for efficiency
- Pursue emerging technologies

Strategic Goal 3 - Strengthen Cybersecurity and Enterprise Risk Management

- Conduct regular risk assessments
- Meet compliance and best practices
- Promote workforce and board cyber awareness
- Advance IT department expertise
- Complete Office 365 transition
- Enhance incident response preparedness

Strategic Goal 4 - Sustain and Advance a Culture of Safety Across the Cooperative

- Formalize and reinforce safety practices
- Expand training and preparedness
- Enhance lone worker safety
- Promote external safety awareness
- Empower employee voices
- Board-level engagement

Strategic Goal 5 - Strengthen Business Continuity and Disaster Recovery Preparedness

- Assess IT infrastructure and DR capabilities
- Develop documentation and procedures
- Align with budget and strategic priorities
- Test and update continuity plans

Strategic Goal 6 - Strengthen Member Engagement and Governance through Enhanced Communication, Annual Meetings and Board Election Processes

- Build on ACSI success
- Mitigate impact of district office closures
- Engage younger generations and enhance post-transaction touchpoints
- Promote board diversity
- Increase member participation and assess district-based voting
- Modernize voting processes and evaluate voting solutions
- Enhance annual meeting experience and educate on the cooperative model

Strategic Goal 7 - Enhance Employee Development through Robust Onboarding, Education, and Succession Planning

- Strengthen onboarding and cooperative education
- Enhance internal communication
- Formalize succession planning
- Enhance performance reviews and leadership development

Action Plan - Strategies

- The CEO and staff have developed tactics and action items to accomplish the Cooperative's strategic goals and objectives.
- The CEO and staff will provide quarterly accountability reports to keep the board apprised of status on all initiatives under the final plan going forward.
- This plan is fluid and is subject to modification as conditions merit.



Corporate Services

MARCH 2026

Human Resources & Safety

- ❖ Corporate Services Structure Update
- ❖ Job Openings
- ❖ Performance Review Process & Merit Increase Update
- ❖ Upcoming All-Employee Safety Day

675

Days without Lost Time Injury

119

Total Employees

Accounting

- ❖ 2025 Audit Site Work Complete
- ❖ Audit Committee Meeting April 20th

February 2026



Statement of Operations

LINE NO		YEAR TO DATE			THIS MONTH	% FROM BUDGET	% CHANGE FROM LAST YEAR
		LAST YEAR A	THIS YEAR B	BUDGET C			
1.0	OPERATING REVENUE & PATRONAGE CAPITAL....	50,612,117.62	56,058,968.51	49,559,191.43	27,231,150.99	13.1	10.8
2.0	POWER PRODUCTION EXPENSE.....	1,973.81-	.00	.00	.00	.0	100.0
3.0	COST OF PURCHASED POWER.....	42,504,438.00-	48,467,193.00-	41,435,170.39-	24,189,073.00-	17.0	14.0
4.0	TRANSMISSION EXPENSE.....	.00	.00	.00	.00	.0	.0
5.0	REGIONAL MARKET OPERATIONS EXPENSE.....	.00	.00	.00	.00	.0	.0
6.0	DISTRIBUTION EXPENSE-OPERATION.....	1,048,339.98-	1,109,060.16-	1,020,428.26-	512,930.47-	8.7	5.8
7.0	DISTRIBUTION EXPENSE-MAINTENANCE.....	1,174,727.89-	1,238,195.51-	1,428,017.82-	599,413.70-	13.3-	5.4
8.0	CONSUMER ACCOUNTS EXPENSE.....	741,124.89-	739,620.73-	690,487.78-	322,904.37-	7.1	.2-
9.0	CUSTOMER SERVICE & INFORMATIONAL EXPENSE.....	144,369.91-	148,111.60-	126,457.20-	57,988.32-	17.1	2.6
10.0	SALES EXPENSE.....	.00	.00	.00	.00	.0	.0
11.0	ADMINISTRATIVE & GENERAL EXPENSE.....	957,594.44-	1,050,080.69-	1,084,053.99-	403,039.04-	3.1-	9.7
12.0	TOTAL OPERATIONS & MAINTENANCE EXPENSE...	46,572,568.92-	52,752,261.69-	45,784,615.44-	26,085,348.90-	15.2	13.3
13.0	DEPRECIATION & AMORTIZATION EXPENSE.....	2,152,167.73-	2,085,481.92-	2,185,985.34-	1,044,114.01-	4.6-	3.1-
14.0	TAX EXPENSE - PROPERTY & GROSS RECEIPTS..	.00	.00	.00	.00	.0	.0
15.0	TAX EXPENSE - OTHER.....	.00	.00	.00	.00	.0	.0
16.0	INTEREST ON LONG TERM DEBT.....	598,720.52-	573,853.02-	559,782.85-	275,361.50-	2.5	4.2-
17.0	INTEREST CHARGED TO CONSTRUCTION - CREDIT	.00	.00	.00	.00	.0	.0
18.0	INTEREST EXPENSE - OTHER.....	14,458.37-	13,204.19-	19,051.54-	6,105.11-	30.7-	8.7-
19.0	OTHER DEDUCTIONS.....	7,600.53-	53,873.34-	8,333.32-	47,507.01-	546.5	608.8
20.0	TOTAL COST OF ELECTRIC SERVICE.....	49,345,516.07-	55,478,674.16-	48,557,768.49-	27,458,436.53-	14.3	12.4
21.0	PATRONAGE CAPITAL & OPERATING MARGINS....	1,266,601.55	580,294.35	1,001,422.94	227,285.54-	42.1-	54.2-
22.0	NON OPERATING MARGINS - INTEREST.....	173,258.43	122,253.32	142,766.66	58,688.41	14.4-	29.4-
23.0	ALLOW. FOR FUNDS USED DURING CONSTRUCTION	.00	.00	.00	.00	.0	.0
24.0	INCOME (LOSS) FROM EQUITY INVESTMENTS....	.00	.00	.00	.00	.0	.0
25.0	NON OPERATING MARGINS - OTHER.....	11.00	10,494.00	.00	10,494.00	100.0	5300.0
26.0	GENERATION & TRANSMISSION CAPITAL CREDITS	.00	.00	.00	.00	.0	.0
27.0	OTHER CAPITAL CREDITS & PATRONAGE DIVID..	.00	.00	.00	.00	.0	.0
28.0	EXTRAORDINARY ITEMS.....	.00	.00	.00	.00	.0	.0
29.0	PATRONAGE CAPITAL OR MARGINS.....	1,439,870.98	713,041.67	1,144,189.60	158,103.13-	37.7-	50.5-

February 2026 Balance Sheet



OWEN Electric

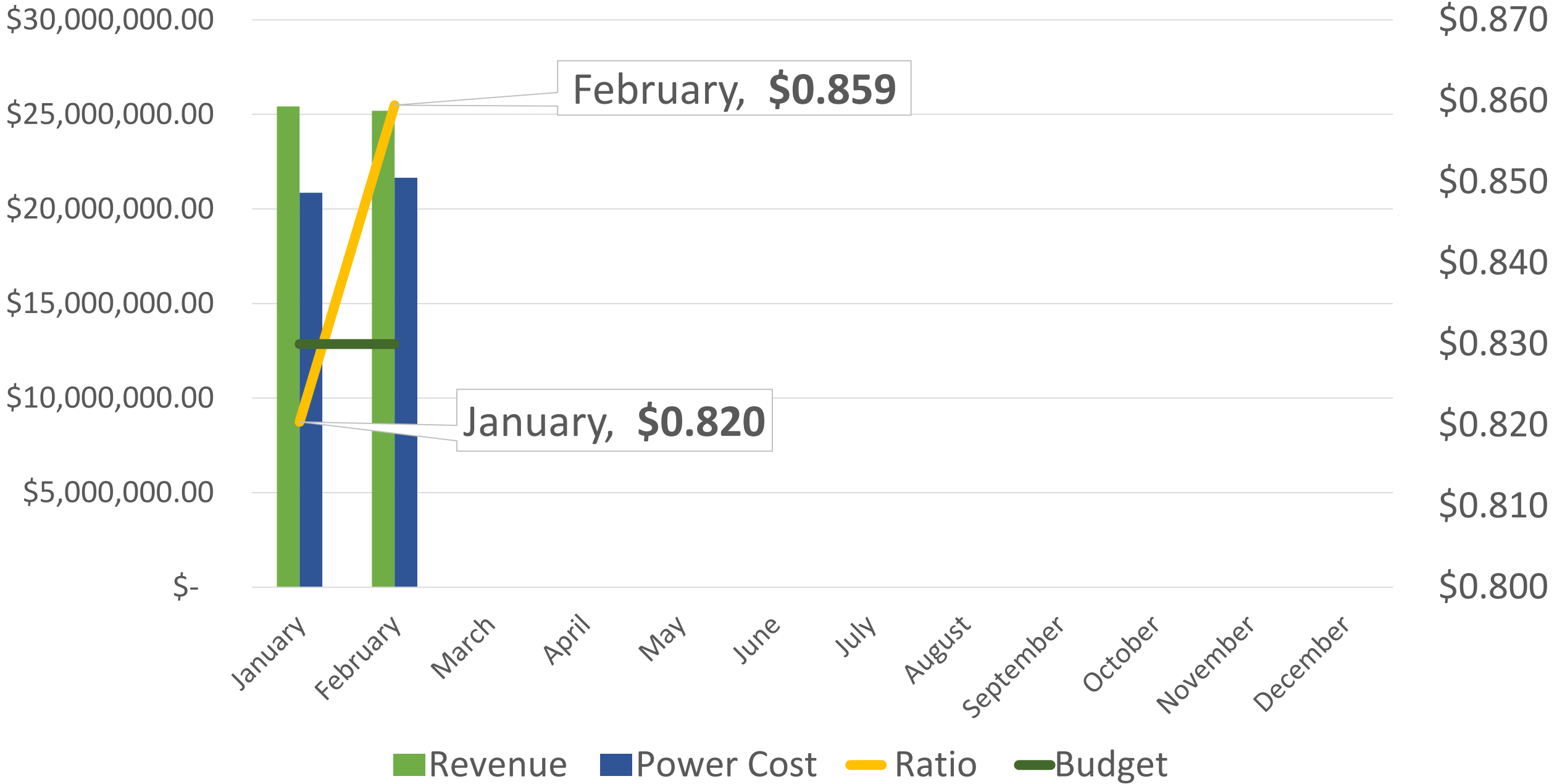
PART C. BALANCE SHEET

LINE NO	ASSETS AND OTHER DEBITS		LIABILITIES AND OTHER CREDITS		
1.0	TOTAL UTILITY PLANT IN SERVICE	376,336,089.75	30.0	MEMBERSHIPS	1,373,460.00-
2.0	CONSTRUCTION WORK IN PROGRESS	1,658,104.15	31.0	PATRONAGE CAPITAL	161,573,359.85-
3.0	TOTAL UTILITY PLANT	377,994,193.90	32.0	OPERATING MARGINS - PRIOR YEAR	11,193,556.91-
4.0	ACCUM PROV FOR DEP & AMORT	202,433,388.89-	33.0	OPERATING MARGINS-CURRENT YEAR	.00
5.0	NET UTILITY PLANT	175,560,805.01	34.0	NON-OPERATING MARGINS	1,305,297.68-
			35.0	OTHER MARGINS & EQUITIES	10,156,680.09-
6.0	NON-UTILITY PROPERTY (NET)	.00	36.0	TOTAL MARGINS & EQUITIES	185,602,354.53-
7.0	INVEST IN SUBSIDIARY COMPANIES	.00			
8.0	INV IN ASSOC ORG - PAT CAPITAL	108,466,750.31	37.0	LONG TERM DEBT - RUS (NET)	75,939,229.97-
9.0	INV IN ASSOC ORG OTHR GEN FND	.00		(PAYMENTS-UNAPPLIED	.00)
10.0	INV IN ASSOC ORG - NON GEN FND	1,160,695.98	38.0	LNG-TERM DEBT-FFB-RUS GUAR	.00
11.0	INV IN ECON DEVEL PROJECTS	.00	39.0	LONG-TERM DEBT OTHER-RUS GUAR	.00
12.0	OTHER INVESTMENTS	14,759.07	40.0	LONG TERM DEBT - OTHER (NET)	22,833,516.45-
13.0	SPECIAL FUNDS	21,168.25	41.0	LNG-TERM DEBT-RUS-ECON DEV NET	.00
14.0	TOT OTHER PROP & INVESTMENTS	109,663,373.61	42.0	PAYMENTS - UNAPPLIED	.00
			43.0	TOTAL LONG TERM DEBT	98,772,746.42-
15.0	CASH - GENERAL FUNDS	3,245,343.49			
16.0	CASH - CONSTRUCTION FUND TRUST	.00	44.0	OBLIGATION UNDER CAPITAL LEASE	.00
17.0	SPECIAL DEPOSITS	1,450.00	45.0	ACCUM OPERATING PROVISIONS	11,929,611.29-
18.0	TEMPORARY INVESTMENTS	10,126,686.24	46.0	TOTAL OTHER NONCURR LIABILITY	11,929,611.29-
19.0	NOTES RECEIVABLE (NET)	.00			
20.0	ACCTS RECV - SALES ENERGY (NET)	26,672,943.45	47.0	NOTES PAYABLE	1,252,292.13-
21.0	ACCTS RECV - OTHER (NET)	407,981.18	48.0	ACCOUNTS PAYABLE	25,178,642.21-
22.0	RENEWABLE ENERGY CREDITS	.00	49.0	CONSUMER DEPOSITS	2,094,154.95-
23.0	MATERIAL & SUPPLIES-ELEC & OTH	2,609,356.06	50.0	CURR MATURITIES LONG-TERM DEBT	.00
24.0	PREPAYMENTS	583,277.01	51.0	CURR MATURIT LT DEBT ECON DEV	.00
25.0	OTHER CURRENT & ACCR ASSETS	406,344.90	52.0	CURR MATURITIES CAPITAL LEASES	.00
26.0	TOTAL CURRENT & ACCR ASSETS	44,053,382.33	53.0	OTHER CURRENT & ACCRUED LIAB	5,020,342.38-
			54.0	TOTAL CURRENT & ACCRUED LIAB	33,545,431.67-
27.0	REGULATORY ASSETS	2,651,342.65			
28.0	OTHER DEFERRED DEBITS	258,883.66	55.0	REGULATORY LIABILITIES	1,002,823.51-
			56.0	OTHER DEFERRED CREDITS	1,334,819.84-
29.0	TOTAL ASSETS & OTHER DEBITS	332,187,787.26	57.0	TOTAL LIABILITIES & OTH CREDIT	332,187,787.26-

=====

=====

Power Cost: Revenue




RATIO	2026	BENCHMARK
TIER	2.24	1.25
OTIER	2.01	1.10
DISTRIBUTION EQUITY	34.48%	20%-40%
EQUITY RATIO	55.87%	>27%
CURRENT RATIO	1.31	>1.0
DAYS OF CASH ON HAND	102	100

TEMPORARY INVESTMENTS- BOARD POLICY 318

Note Number	Principal Amount	Interest Rate	Maturity Date	Term in Days	Interest Earnings
Select Note	\$3,000,000.00	4.27%	3/2/2026	227	\$79,667.67
Select Note	\$2,000,000.00	4.20%	6/9/2026	270	\$62,136.99
Select Note	\$5,000,000.00	4.58%	11/6/2026	270	\$132,410.96
TOTAL PRINCIPAL	\$10,000,000.00		TOTAL AT MATURITY		\$274,215.62
CFC COMMERCIAL PAPER		3.10%-3.23%			\$21,624.82



OWEN Electric

A Touchstone Energy Cooperative 

MEMBER SERVICES REPORT - 3/26/26

Member Account Activity	Current Month 2026	Last Month 2026	Same Period Last Year 2025
Bank Deposits	\$17,439,763.67	\$15,047,438.61	\$15,889,969.55
Accounts Billed	68,546	68,393	67,281
Total Billing (Excluding Taxes)	\$18,156,591.16	\$15,867,055.90	\$11,631,451.24
Delinquent Notices Mailed	9,036	8,691	8,379
Total Delinquent Amount	\$1,986,928.10	\$1,899,354.56	\$1,948,061.70
Total Penalty Amount	\$97,787.54	\$94,076.64	\$95,716.63
Number of Arrangements	1,381	1,233	1,588
Total Amount of Arrangements	\$405,526.39	\$273,482.59	\$465,375.99
Return Check Amount	\$41,562.11	\$37,024.50	\$26,405.70
Number of Return Checks	137	146	96
Office Pymts (Walk-in & Drive-thru)	1,508	1,366	2,781
Cutoff Tickets	1,652	1,679	1,586
Actual Cutoffs	664	230	461
Account total disconnect by AMI	664	230	461
New Accounts Set Up	495	541	436
Service Orders	2,152	2,215	2,119
Calls Answered by Member Services Reps	9,296	10,927	8,580
Telelink Calls	26,809	28,831	25,580
Member Services Collection Program	\$5,178.23	\$4,031.96	\$3,372.24
Total Collections by Member Services	\$1,142,835.80		



February Power Bill Statistics

*	FEBRUARY '26	JANUARY '26	FEBRUARY '25
OWEN'S COINCIDENT PEAK (kW)	289,831	319,944	261,822
~ PERCENTAGE OF EKPC'S TOTAL LOAD	9.52%	9.99%	8.45%
ENERGY (kWh MEASURED @ SUBS)	130,501,264	160,037,354	126,744,988
AVERAGE TEMPERATURE (CVG)	34.1^o	26.9^o	34.1^o
HEATING DEGREE DAYS	841	1184	835
B RATE TOTALS (kW) & PERCENTAGE OF TOTAL LOAD	28,161 9.72%	29,501 9.22%	29,516 11.27%

*does not include Nucor

Cold Weather Communications


Owen Electric Cooperative, Inc.
March 9 at 7:27 AM · 🌐

LIHEAP Winter Crisis is open for applications until March 27, 2026. Eligible Kentucky households facing heating emergencies may qualify for assistance. Schedule at www.nkcac.org.

First come, first-served assistance now available.

The deadline for LIHEAP Winter Crisis is March 27, or until funds are depleted.

NEED HELP?



Owen Electric Cooperative, Inc.
January 26 · 🌐

While the winter storm threat has largely passed, extremely cold temperatures and dangerous wind chills remain. When it's this cold, heating systems run longer and use more electricity, which can lead to higher energy bills.

To help manage energy use, consider lowering your thermostat a few degrees when possible, sealing drafts around doors and windows, using space heaters safely and sparingly, and delaying high-energy activities like laundry or dishwashing until temperatures moderate.

If you prefer more predictable monthly bills, levelized billing can help spread energy costs more evenly throughout the year. Learn more at owenelectric.com.



Owen Electric Cooperative, Inc.
February 4 · 🌐

Space heaters can provide quick comfort on cold days, but they can also drive up your electric bill.

Use this calculator to see how heater wattage, hours of use, and your electric rate factor into the monthly cost. Small changes—like lowering run time or using a programmable thermostat—can add up to real savings.

SPACE HEATER CALCULATOR

Owen Electric Cooperative, Inc.
February 3 · 🌐

During extreme cold weather, it's important to understand why electric bills go... See more

Why do bills go up ↑ ❄️ When temperatures drop low? ↓ ❄️

During extreme weather, your system works harder to heat your home. As temperatures drop, this makes your heating equipment run at maximum capacity - which means it's using more electricity. Therefore, in just a few days, extreme temperatures can cause your bill to spike.



Watts used per month × kWh rate = Monthly cost

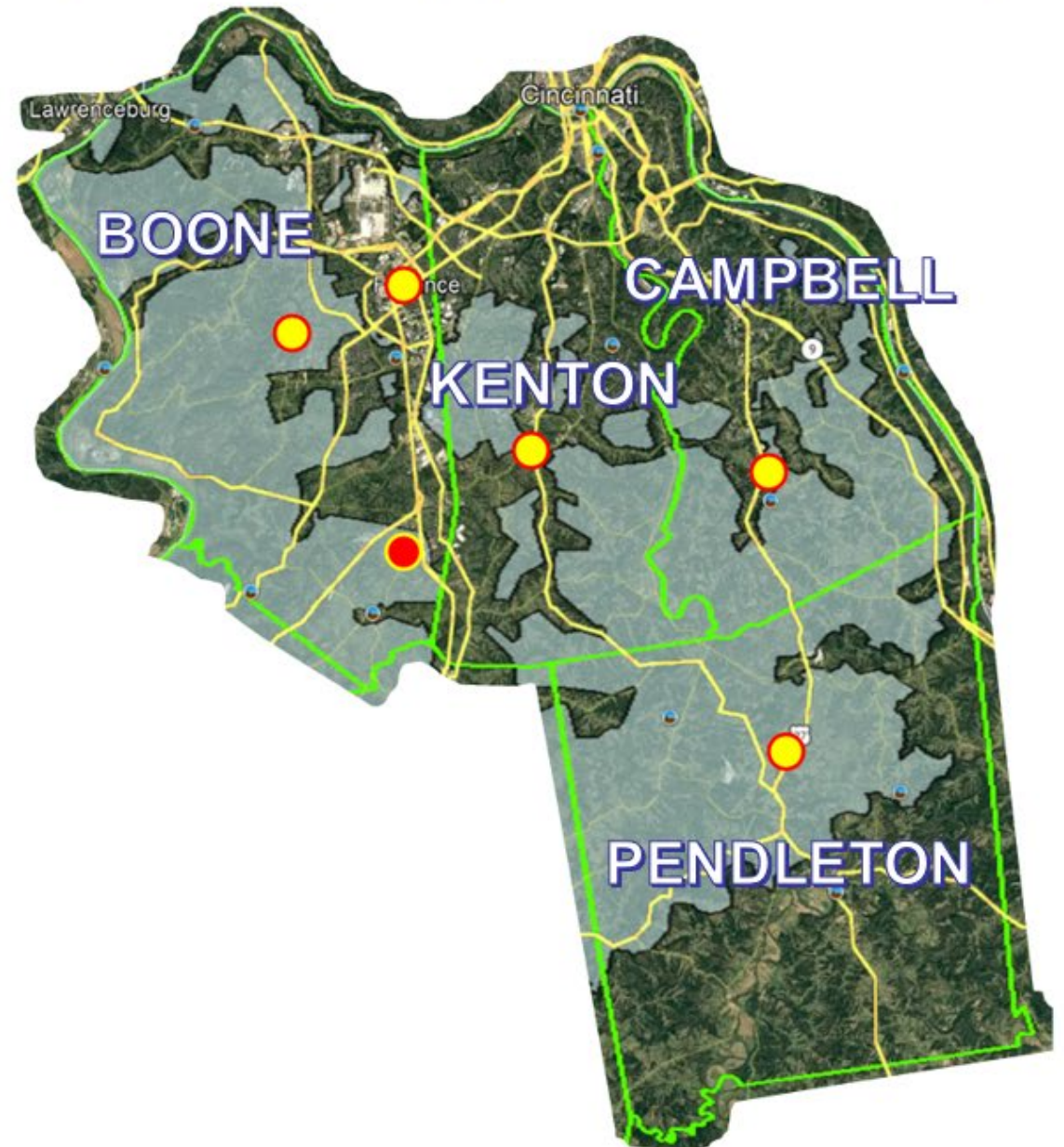
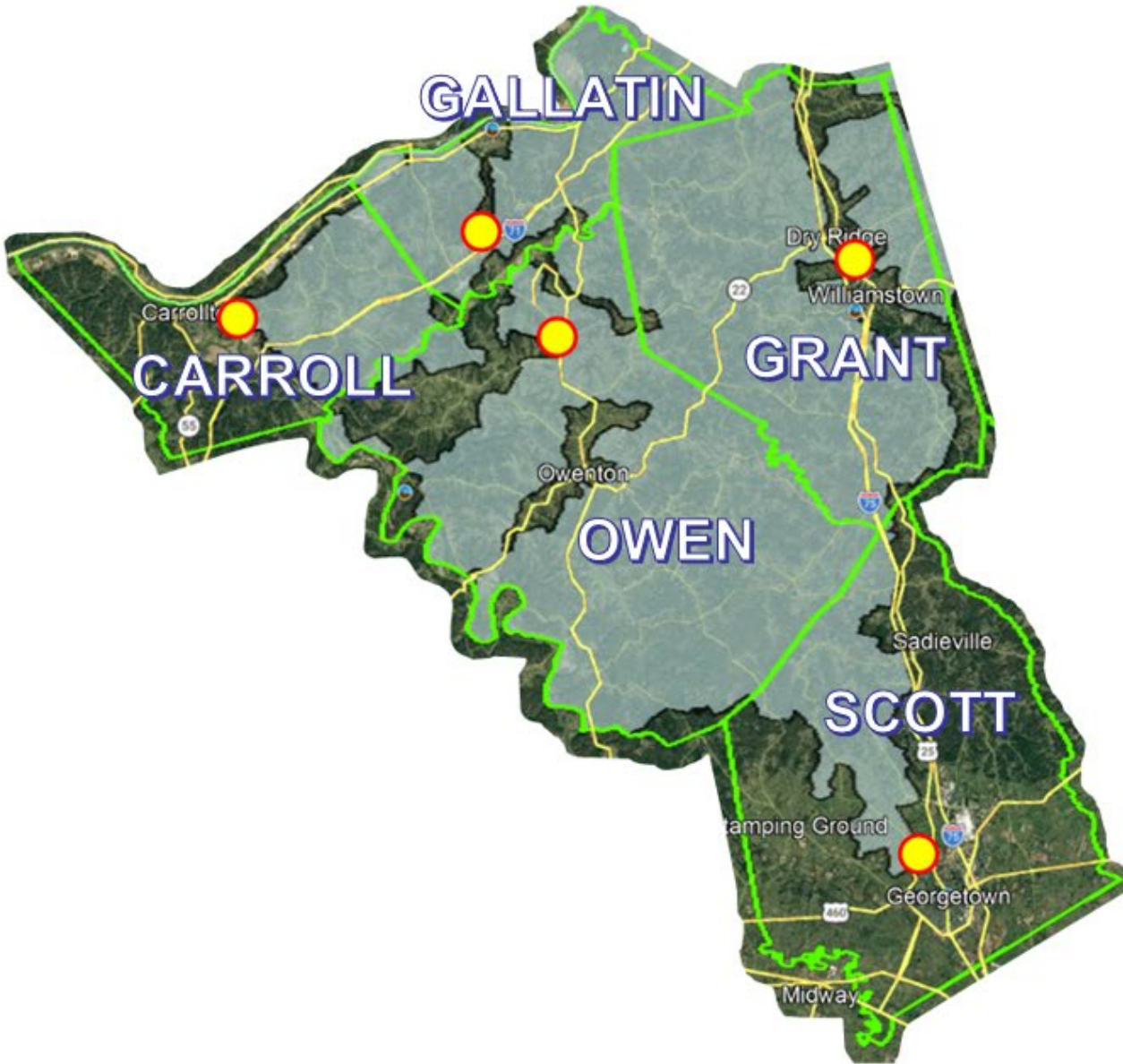
360 watts × (0.09527) = \$34.30/month

*Dividing by 1,000 converts watts to kilowatts

SUN	MON	TUE	WED	THU	FRI	SAT
31-May	1-Jun OWEN CO. MEMBER APPRECIATION OWEN ELECTRIC HEADQUARTERS, OWENTON	2-Jun GRANT CO. MEMBER APPRECIATION GRANT BRANCH OFFICE, DRY RIDGE	3-Jun PENDLETON CO. MEMBER APPRECIATION SHARP MIDDLE SCHOOL, BUTLER	4-Jun GALLATIN CO. MEMBER APPRECIATION KENTUCKY SPEEDWAY GIFT SHOP, SPARTA	5-Jun CAMPBELL CO. MEMBER APPRECIATION MAIN STREET BAPTIST CHURCH, ALEXANDRIA	6-Jun
7-Jun	8-Jun BOONE CO. MEMBER APPRECIATION FLORENCE GOV'T CENTER & LONGBRANCH ELEMENTARY	9-Jun KENTON CO. MEMBER APPRECIATION NICHOLSON CHRISTIAN CHURCH, INDEPENDENCE	10-Jun CARROLL CO. MEMBER APPRECIATION GEN. BUTLER STATE RESORT PARK, CARROLLTON	11-Jun SCOTT CO. MEMBER APPRECIATION SCOTT COUNTY PRESCHOOL, GEORGETOWN	12-Jun 2026 ANNUAL MEETING, WALTON SERVICE CENTER	13-Jun



Member Appreciation 2026



- Partnership with Honor Flight Kentucky
- EKPC Rate Case
- President Trump's Northern Kentucky Visit



Publicity on Owen's ACSI Score

PRESS RELEASES

Press release: Owen Electric among 26 co-ops with top ACSI® Scores for 2025

by Press Releases March 13, 2026



Search ...

- Latest Articles**
- Covington to vote on financing, incentives for airline food producer**
March 18, 2026
 - Union formally opposes state bills over local control, taxes and permitting authority**
March 18, 2026
 - Advocates push water safety changes after Florence child's death**
March 18, 2026
 - 4 takeaways from the money race for US Senate in Kentucky**
March 18, 2026
 - NKY Young Professionals to host Perfetti Van Melle CFO at April lunchtime leader chat**
March 18, 2026



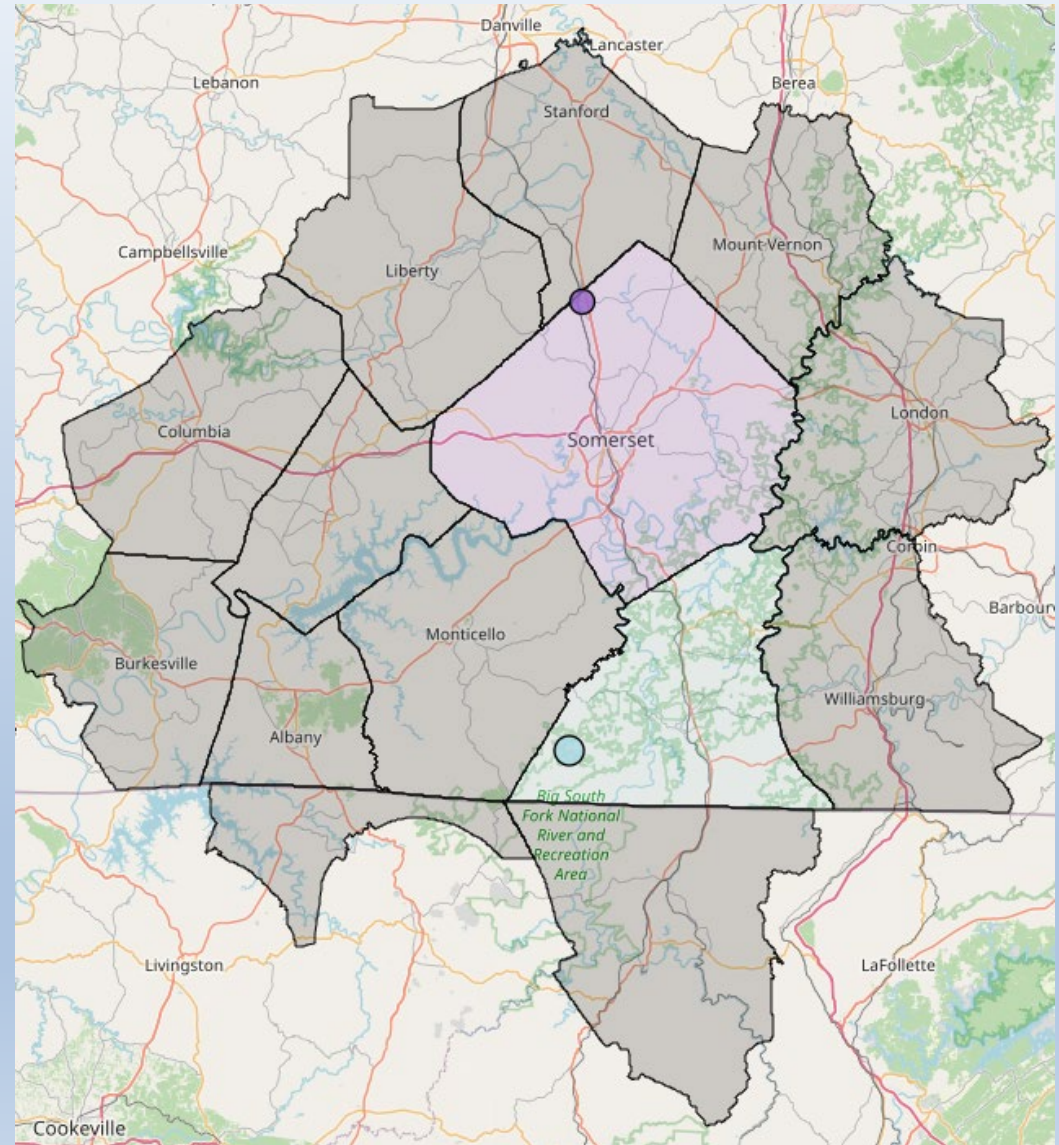


Operations Board Report

March 2026

Mutual Aid

- South Kentucky RECC – Somerset, Ky.
 - Jan 26th – Feb 1st – Ice Storm
 - 13 Lineman – (3) Construction Crews
 - John Lilly, Seth Kingkade, Zach Martin, Bobby VonBokern, Charlie Colligan, Trevor Evans, Ethan Glass, Jacob Travis, Evan Meenach, Bryan Veirs, Josh Hearn, Sawyer Wilhoite, Dylan Schlueter
 - 1 mechanic – Philip Flanagan





Public Service Commission

- Full Periodic Inspection 2026
 - Periodic Inspection Document
 - 239 Questions for Staff/Depts.
 - Documents for Review
 - Field Review of the System
 - 2 circuits that have been recently trimmed
 - 2 circuits that are due to be trimmed
- Michael Ferguson –
 - PSC Investigator
 - 3/24 – 3/26

2024 Documents for Review during Inspection

Safety Manual
Administrative Policies on Safety
Fall Protection Plan
Vehicle Maintenance Documentation (1 Bucket Truck for last Year)
Job Briefing Documentation
Crew Safety Audit Documentation
Vehicle Dielectric Testing Documentation
Vehicle Inspection and Maintenance Documentation
Hot Tool Dielectric Testing Documentation
Rubber Goods Testing Documentation
System Inspection Plan
Completed Building Inspection Documentation
Tool Inspection Documentation
Switching Station Inspection Documentation
Substation Inspection Documentation
System Inspection Documentation (Distribution and Transmission)
System Reliability Documentation
Emergency Response Plan
Vegetation Management Plan
Voltage Survey Documentation
Quarterly Meter Report Documentation
Customer Complaint Files (Both Company and PSC)
Customer Rights Documentation
Master Watt-Hour Standard Certifications
Meter Tester Certifications
Working Watt-Hour Standard Certifications
Master Indicating Instrument Certifications
Working Indication Instrument Certifications
Contract Meter Testing Agency Standard Certifications
Contract Meter Testing Agency Meter Testers Certifications
Current Tariff Documentation
Kentucky Revised Statutes Documentation
Commission Regulations Documentation
Any Additional Documents Requested during Inspection

Personal Protective Equipment

Are rubber goods (gloves, sleeves, and blankets) inspected, checked, and tested?

Yes No N/A

Person(s) Responding: Cody Beckham

Title: Safety Manager

Comment:

A misty landscape at sunrise or sunset. The sun is low on the horizon, partially obscured by trees, creating a soft, golden glow. The foreground is a grassy field, and the background shows a line of trees and a building in the distance, all shrouded in a light mist.

INFORMATION TECHNOLOGY

MARCH 2026

Engineering

Andrew Long

2026 Reliability KPIs

	Q1	Q2	Q3	Q4	YTD
SAIDI	2.060				2.060
SAIFI	0.020				0.020
MED	0				0

Q1 KPI's		
	SAIDI	SAIFI
THRESHOLD	<14.94	<0.139
TARGET	<13.071	<0.136
STRETCH	<11.203	<0.121

-Continues to be a good start to Q1, though traditionally March is where most SAIDI/SAIFI are added in Q1.

-All the outages for this duration were relatively small, and the majority were restored in an hour or less.

County	Subdivision	Lots
	<u>Completed 2026</u>	
Boone	Asbury Development - Lee Rickey	16
Kenton	Tullamore Phase 2	32
Kenton	Woods at Lakefield Phase 4 Part B	26
	<u>Under Construction</u>	
Boone	Woodvale Section 100	31
Boone	Woodvale Section 210	19
Kenton	Timber View Apartments	42
Boone	Hawks Landing Phase 4	18
Boone	Parkview Senior Apartments	74
Boone	Autumn Ridge at Northpoint Phase 3	25
Boone	Autumn Ridge at Northpoint Phase 3 Part B	26
Boone	Triple Crown Section 34 Phase 4	34
Kenton	Southwick Phase B Part 2	24
Kenton	Greenbrook Phase 011	15
Boone	Woodlands Phase 3B	16
Kenton	Meadow Cove - Meadow Glen Subdivision	25
Kenton	Stonewater Phase C	TBD
Boone	Triple Crown Hicks Pike	7

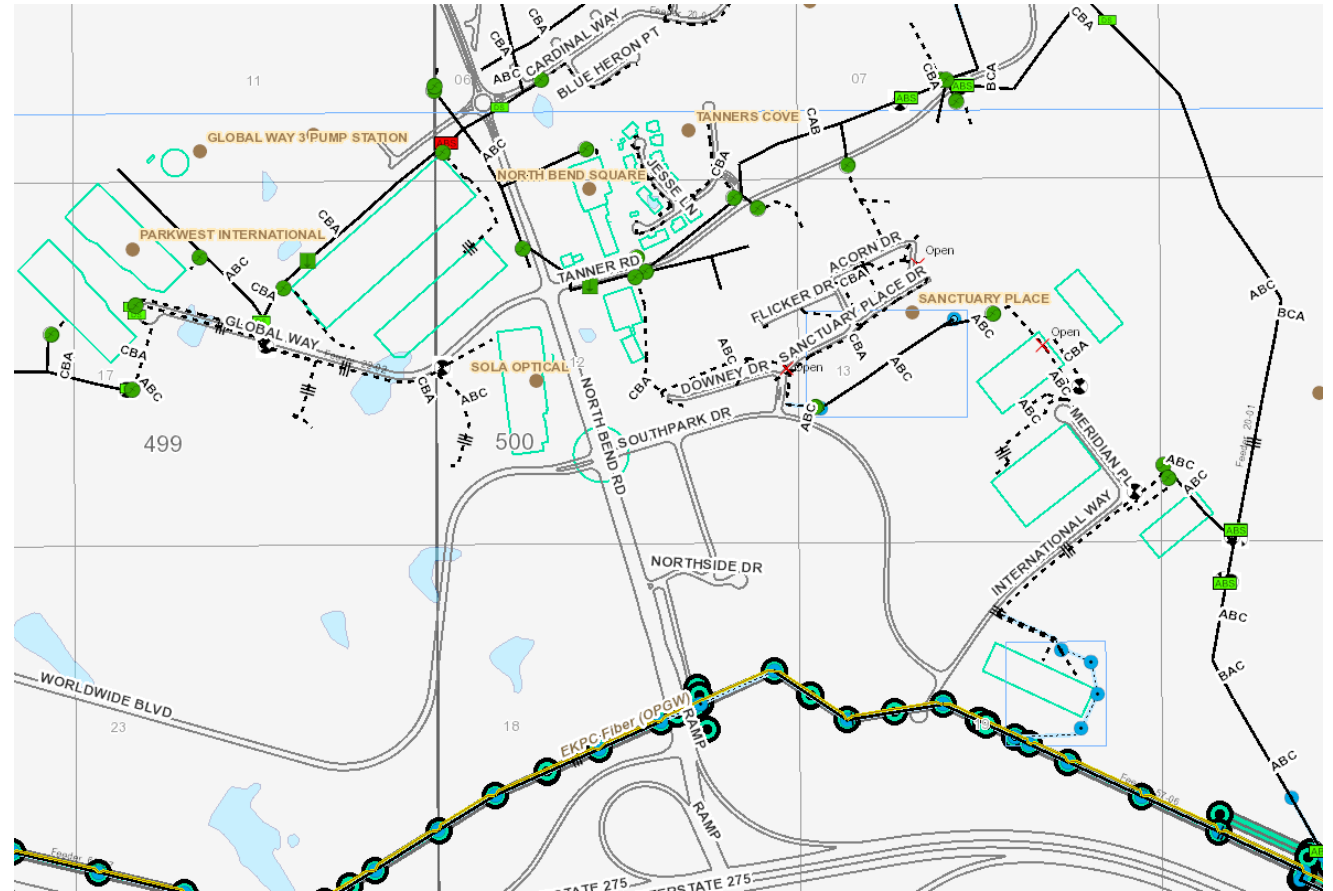
County	Subdivision	Lots
	<u>Designed Subdivisions</u>	
Boone	Rivers Pointe Phase 2 part C	32
Kenton	Maher Meadows - Mark Wilmlink Property	3
Campbell	Parkside IV Phase E Section 3	15
Kenton	Greens at Glenhurst Phase A	30
Kenton	Bristow Road Townhomes	38
Boone	Ballyshannon 524/Woodvale 200	41
Boone	Flight Apartments - Building 1 - Williams Road	56
Boone	Flight Apartments - Building 2 - Williams Road	30
Boone	Flight Apartments-Bldgs 3 & 4 -Williams Road	104
Boone	Flight Apartments - Building 5 - Williams Road	56
Boone	Flight Apartments - Building 6 - Williams Road	56
Boone	Flight Apartments-Bldgs 7 & 8 -Williams Road	104
Kenton	Everett Ridge - Phase A w/Duke Gas/Electric	TBD
Grant	Heartland Meadows - Phase 1	53
Boone	Rivers Pointe Phase 4A	20
Boone	Aberdeen Phase B	8
Boone	Pimlico Park	3
Boone	Hawks Landing Phase 4 Part 2	17
Boone	Hawks Landing Phase 4 Part 3	28
Kenton	Greenbrook - Phase 012	20
Kenton	Greenbrook - Phase 013	13

County	Subdivision	Lots
	<u>Not Designed - On Deck</u>	
Boone	Ridgefield Hathaway-Camp Ernst	TBD
Boone	Amber Estates Phase 3	TBD
Boone	The Glenss at Gunpowder Phase 1	TBD
Kenton	Greenbrook - Autumn Maple Drive Phase A2	15
Kenton	Stonewater Phase C	TBD
Boone	Triple Crown Hicks Pike	7

**New known Residential lots
Total: >1,172**

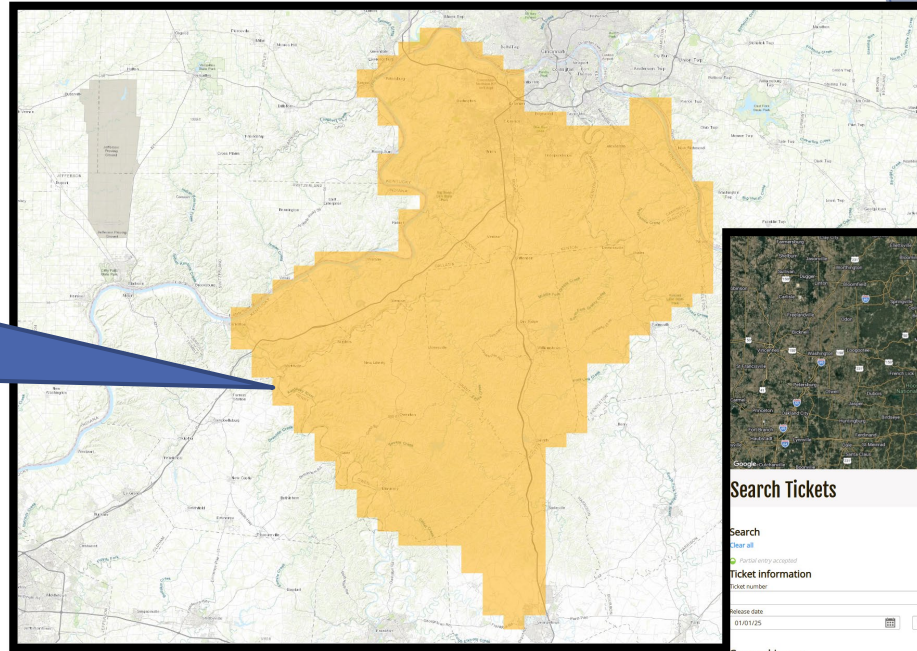
795 Project

- Skilcraft boring
 - Helps Southpark voltage and backfeeding.
- First utilization of the 795.



GIS Data and 811

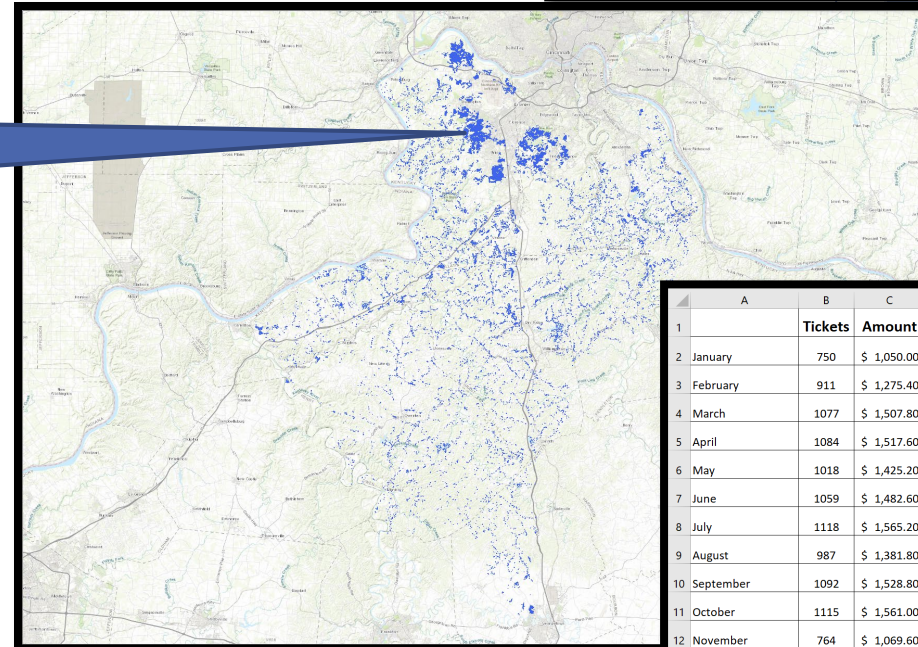
We could provide 811 with just our service territory. This would result in roughly 40,000 locate tickets that Owen Electric is included on annually.



A screenshot of a web interface for searching tickets. It includes a search bar, a 'Search' button, and a table of results. The table has columns for 'Ticket', 'Type', and 'Release DateTime'. Below the table, there is a 'Generatehir area' section.

Ticket	Type	Release DateTime
250090108	NXT	01/09/25 08:24 am
250090092	NXT	01/09/25 08:14 am
250090059	NXT	01/09/25 07:45 am
250090056	NXT	01/09/25 07:41 am
300000004	NXT	01/09/25 03:38 am

Instead we provide 811 with our underground wire locations and are included on about 12,000 locate tickets annually.

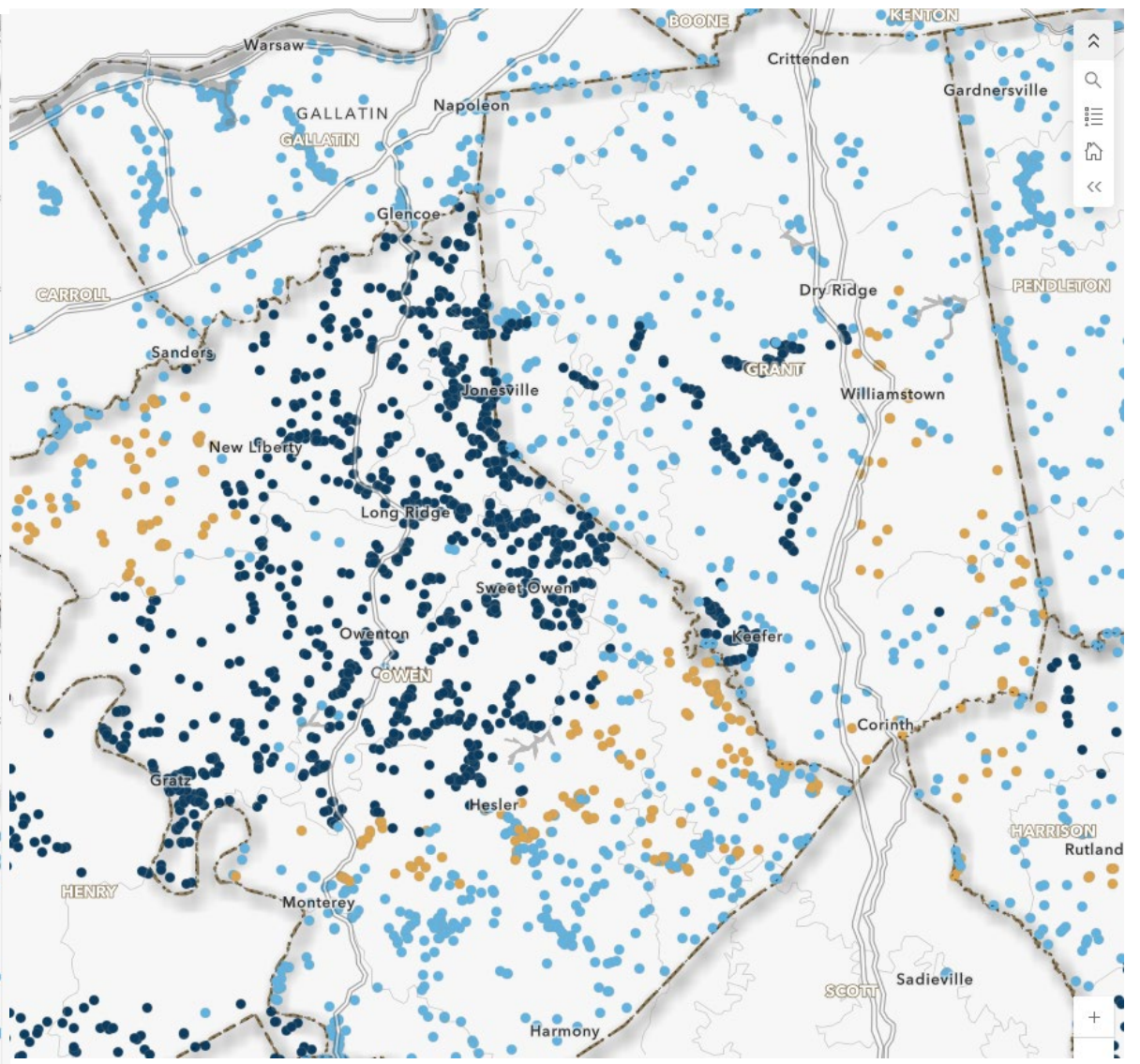
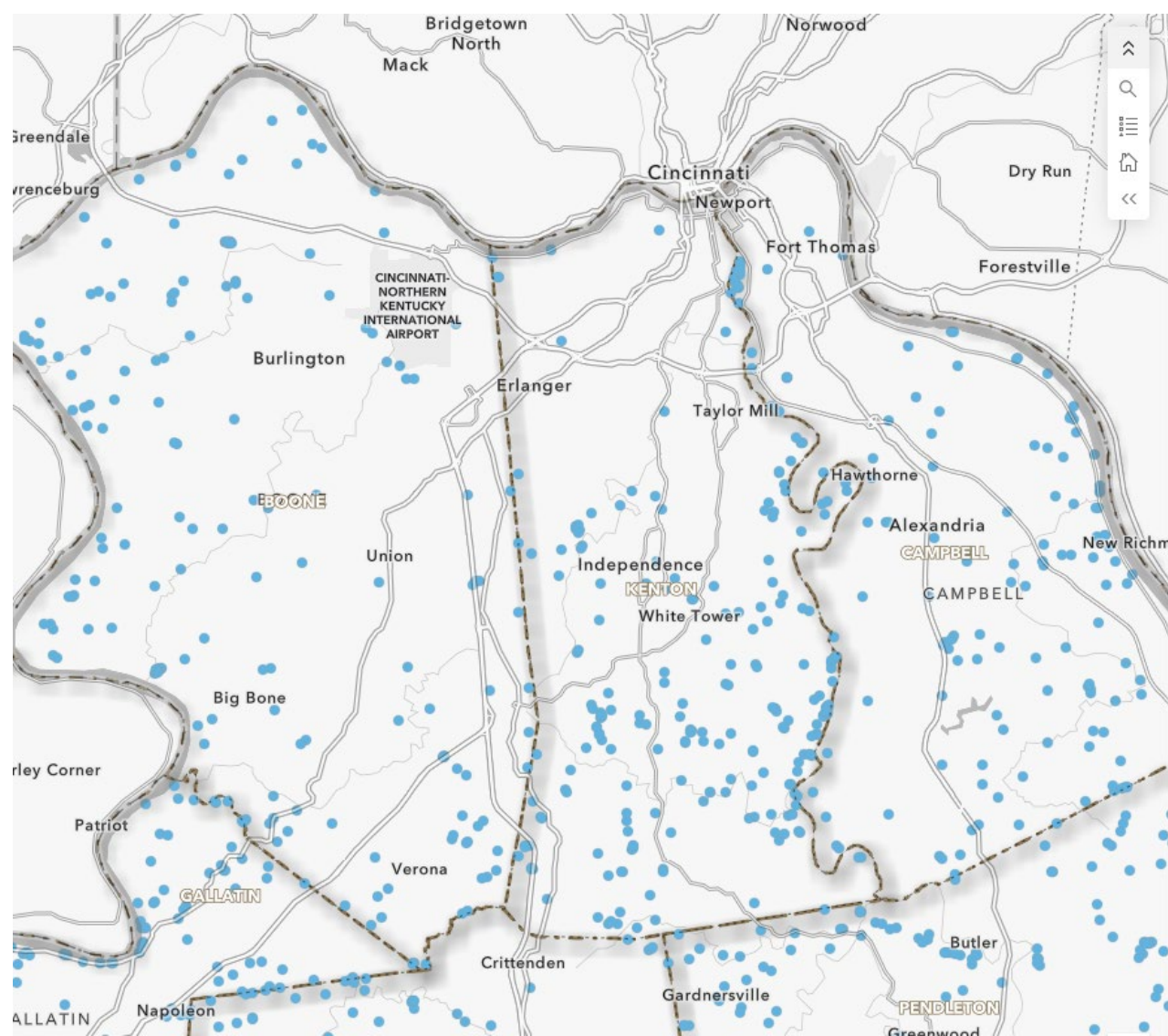


This saves Owen Electric from 28,000 additional tickets and about \$39,000 annually.

	A	B	C	D	E	F
1		Tickets	Amount	Potential Tickets	Potential Amount	Net Savings
2	January	750	\$ 1,050.00			
3	February	911	\$ 1,275.40			
4	March	1077	\$ 1,507.80			
5	April	1084	\$ 1,517.60			
6	May	1018	\$ 1,425.20			
7	June	1059	\$ 1,482.60			
8	July	1118	\$ 1,565.20			
9	August	987	\$ 1,381.80			
10	September	1092	\$ 1,528.80			
11	October	1115	\$ 1,561.00			
12	November	764	\$ 1,069.60			
13	December	721	\$ 1,009.40			
14		11696	\$16,374.40	39754	\$ 55,655.60	\$ 39,281.20

Broadband Equity, Access and Deployment Program (BEAD)

- KY has been allocated \$1.1 billion for expanding High Speed Internet for serving unserved and underserved Kentuckians.
- All Sites have been awarded for Owen's Territory. It is divided into 4 providers. Spectrum, SpaceX, Amazon LEO, and IBT Group USA LLC(unknown to us). No permits have been submitted for BEAD to Owen.
- 5 Year plan to complete the development in the State
- To follow the latest updates: [KYBEADA Funding Opportunity Details - Broadband Grants Management Portal](#)



Vast majority of bead funding in our area has been awarded to satellite internet providers, Starlink from SpaceX and Amazon LEO.

Biggest Fiber Attachment will be Owen County with ~1,700 poles

Review/Discuss/Approve- EKPC Director Nomination 2026-2027

-Motion: _____
-Approve: _____



EKPC Report



Report Presented By:
Alan Ahrman

Report Presented By: Rick Messingschlager

Attorney's Report Presented By: Jake Thompson

Information Agenda



2026 Board Meetings & Training

- April 20, 2026**-Audit Committee Meeting, 9:00am, HQ-Owenton, KY (Bob, Charlie, Eddie & Alan)
- April 26-29, 2026**-NRECA Legislative Conference, Washington, DC
- April 30, 2026**-Regular Board Meeting, 9:00am, HQ-Owenton, KY
- May 26, 2026**-Regular Board Meeting, 9:00am, HQ-Owenton, KY
- June 1-June 11, 2026**-Membership Appreciation Days, various locations/counties
- June 12, 2026**-Annual Business Meeting, 6:00pm, Walton Service Center, Walton, KY
- June 25, 2026**-Regular Board Meeting, 9:00am, HQ-Owenton, KY
- June 26-30, 2026**-Summer School for Directors, Louisville, KY
- July 30, 2026**-Regular Board Meeting, 9:00am, HQ-Owenton, KY
- August 27, 2026**-Regular Board Meeting, 9:00am, HQ-Owenton, KY
- September 24, 2026**-Regular Board Meeting, 9:00am, HQ-Owenton, KY
- October 14-16, 2026**-NRECA Regional Meeting, Orlando, FL
- October 29, 2026**-Regular Board Meeting, 9:00am, HQ-Owenton, KY
- November 19, 2026**-Regular Board Meeting, 9:00am, HQ-Owenton, KY
- December 11-15, 2026**-Winter School for Directors, Nashville, TN
- December 17, 2026**-Regular Board Meeting, 9:00am, HQ-Owenton, KY

- Conference Reports
 - As needed
- Old Business
- New Business
- Executive Session
- Miscellaneous
- Adjourn
 - Motion _____
 - Second _____