

**OWEN ELECTRIC COOPERATIVE
REGULAR BOARD MEETING
May 26, 2026**

PRESENT The regular meeting of the Board of Directors of Owen Electric Cooperative, Inc., was held at the Headquarters Building in Owenton, Kentucky, on May 26, 2026. All directors were present. Also present were: Mike Cobb, Erin Rehkamp, Mike Stafford, Brian Jones, Jim Petreshock, Andrew Long, Christel Buffin, Attorney Jake A. Thompson.

**CALL TO ORDER,
PLEDGE OF ALLEGIANCE
AND INVOCATION**

The meeting was called to order, and the Pledge of Allegiance and invocation were given by Jim Henning and Mike Cobb, respectively.

ADOPTION OF

AGENDA Upon a motion by Charlie Richardson, second by Eddie McCord, the Board voted unanimously to adopt the May 26, 2026, Board Meeting Agenda.

MINUTES

APPROVED Upon a motion by Rick Messingschlager, second by Jim Henning, the April 30, 2026, Regular Board Meeting Minutes were approved.

**SAFETY
MOMENT**

Andrew Long gave the safety moment on driving during the summertime with kids being out of school and more frequently walking and riding bikes and e-bikes around town, intersections and on roads.

**EMPLOYEE
RECOGNITION**

New employee Caitlyn Spears, Member Service Representative, was introduced to the Board.

MEMBER

CONCERNS The Board reviewed and discussed member compliments and concerns.

**NEW MEMBERS
ACCEPTED/
TERMINATED**

ACCOUNTS The Directors then reviewed and accepted the listing of 485 New Members and 226 Terminated Accounts.

**REVIEW OF LISTING OF
TERMINATED ACCOUNTS**

The Directors then reviewed and accepted as information a listing of the terminated accounts for the month.

REVIEW OF PRESIDENT'S, CONSULTANT'S AND DIRECTORS' EXPENSES

The Directors then reviewed and accepted as information a listing of April expenses incurred by the President, Consultant and Directors.

UNCOLLECTIBLE WRITE-OFFS AND CAPITAL CREDIT PAYMENT

The Board reviewed 48 member write-offs of \$10,447.02.

The Board reviewed payment of \$21,561.89 in Capital Credits.

Upon a motion by Hope Kinman, second by Eddie McCord, the Board voted unanimously to approve the Uncollectible Write-Offs, Capital Credit Payments and Consent Agenda Items.

PRESIDENT/ CEO REPORT

Mike Cobb presented the CEO Report for the month of May, 2026, in accordance with the summary attached hereto and made a part of these minutes.

Mike provided Strategic Plan Progress Updates to the Board on each Strategic Goal and objective and the Board discussed the Coop's progress towards completing the objectives.

Mike reviewed with the Board implications of the Meridian/NISC merger.

Mike reviewed the 2025 Annual Report Review with the Board and led a discussion regarding the 2025 Annual Report.

The Board discussed EKPC's rate case and Nucor's request for a rehearing.

Mike provided the Board with an update on the sale of the Butler property.

CORPORATE SERVICES AND ACCOUNTING

Erin Rehkamp presented the preliminary Corporate Services and Accounting report in accordance with the summary attached hereto and made part of these minutes. Erin reported \$2,183,874.69 net margins through April 2026. Erin reported the Coop had gone 736 days as of May 26th without a lost time injury. Erin reported the cost of power in April 2026 was \$.845 cents of every dollar of revenue. She also reported TIER levels of 2.89 and OTIER of 2.57 for 2026. Erin reported the Coop currently has 120 full-time employees.

MEMBER

SERVICES Mike Stafford presented the Member Services report for the month in accordance with the summary attached hereto and made part of these minutes. Mike reported accounts billed for the month of April 2026 of 68,827 compared to 67,326 for the same period last year.

BYLAW

REVISIONS Mike Stafford presented and discussed with the Board proposed amendments to Bylaws regarding Board elections and voting.

OPERATIONS

Brian Jones presented the Operations report for the month in accordance with the summary attached hereto and made part of these minutes, including an update on the PSC line inspection.

TECHNOLOGY

Jim Petreshock presented the Technology report for the month in accordance with the summary attached hereto and made part of these minutes.

After discussion and upon a motion by Rick Messingschlager, second by Jim Henning, the Board voted unanimously to approve Physical Security Testing by Dean, Dorton, Allen & Ford as presented.

ENGINEERING

Andrew Long presented the Engineering report for the month in accordance with the summary attached hereto and made part of these minutes.

**ACTION
ITEMS**

Mike Cobb and Erin Rehkamp led the Board in a review and discussion of the 400 Series Policies, and the Board further discussed that it was abolishing Policy 416 on the basis that evaluating and overseeing "Risk" is the responsibility of the entire Board, and should not be delegated to a committee.

EKPC REPORT

Alan Ahrman, gave the April 2026 EKPC Board meeting report in accordance with the summary and minutes of said meeting prepared by EKPC staff. The actual summary and minutes cannot be attached to these minutes because of the terms of a Confidentiality and Non-Disclosure Agreement EKPC has required the coop's director representative and CEO to sign before being allowed to attend said meetings.

KEC REPORT

Rick Messingschlager presented the April 2026, Kentucky Electric Cooperative's Board Meeting report in accordance with the minutes and summary of said meeting prepared by KEC staff. The actual minutes and summary of the meeting cannot be attached to these minutes at the request of KEC.

ATTY. REP. Jake A. Thompson reported there was no new litigation for the month.

TRAINING/MEETINGS

- Membership Appreciation Days – June 1-11, 2026
- EKPC Annual Meeting-June 9, 2026
- OEC Annual Business Meeting- June 12, 2026
- OEC Regular Board Meeting – June 25, 2026
- Summer School for Directors – June 26-30, 2026
- OEC Regular Board Meeting – July 30, 2026
- KEC Annual Meeting-August 10-11, 2026
- OEC Regular Board Meeting – August 27, 2026
- OEC Regular Board Meeting – September 24, 2026
- NRECA Regional Meeting - October 14-16, 2026
- OEC Regular Board Meeting – October 29, 2026
- OEC Regular Board Meeting – November 19, 2026
- Winter School for Directors – December 11-15, 2026
- OEC Regular Board Meeting – December 17, 2026
- Directors Conference – January 17-20, 2027
- Power Xchange – February 12-17, 2027
- Legislative Conference – April 10-14, 2027

CONFERENCE

REPORTS None.

OLD BUSINESS

None.

NEW BUSINESS

None.

EXECUTIVE SESSION

None.

ADJOURN Upon a motion by Hope Kinman, second by Charlie Richardson, the Board voted unanimously to adjourn the meeting.



Chairman



Secretary



REGULAR BOARD MEETING

MAY 26, 2026



A Touchstone Energy Cooperative 

Agenda

- Directors Present/Absent
- Call to Order/Pledge of Allegiance/Invocation


Agenda & Minutes

- Adoption of Agenda (Tab 3)
- Approval of Minutes of Previous Meeting (Tab 4)

Safety Moment

Andrew Long

OWEN Electric

A Touchstone Energy Cooperative 

New Employee Introduction



Caitlyn Spears, Member Service Representative

Review/Discuss Member Compliments and/or Concerns

Review Agenda

- Review New Members: 485
(Listing on Board Table & in Board Paq)

- Review Listing of Terminated Accounts:
226 Members at \$31,153.01
(Listing on Board Table & in Board Paq)

Review Agenda

Review of President's, Directors' and Consultant Expenses



Consent Agenda Items

- Approve Uncollectible Member Write-offs:

48 Members at \$10,447.02

(Listing on Board Table and in Board Paq)

- Approve Payment of Capital Credits: \$21,561.89

(Tab 11)

- Approval of Consent Agenda Items

– Motion _____

– Second _____



President/CEO Report

May 26, 2026

Board Meeting

- Strategic Plan Progress Updates
- 2025 Annual Report Review
 - Advance look at the Owen's June 2026 *Kentucky Living* Insert
- Meridian / NISC Merger
- Misc. Topics & Other Discussion



2025 Annual Report

Owen Electric Cooperative



This annual report highlights the work of Owen Electric Cooperative over the past year and how we serve our members every day. As a member-owned electric cooperative, we believe transparency matters—from how we deliver reliable electric service and manage costs to how we invest in our system and support our communities. This report offers a look at what we accomplished in 2025, the priorities guiding our decisions and how our work reflects the cooperative principles that put members first.

The theme of this year's report is COMMUNICATE, reflecting our duty to clearly convey to members how Owen Electric operates and what drives reliability and cost. For instance, we share timely updates in *Kentucky Living*, on

owenelectric.com and across our social media channels.

We're eager to answer questions—from understanding your bill to energy-saving tips—and we advocate with policymakers, so they understand how their decisions affect our ability to serve you.

Over the past year, Owen Electric Cooperative has remained deeply committed to the communities we serve through active engagement, financial support and meaningful partnerships. Employees and leadership participated in local parades, festivals and community events, creating opportunities to connect with members and promote safety awareness. The cooperative also supported numerous organizations through

sponsorships and charitable contributions, reinforcing our dedication to improving quality of life throughout our communities. Investing in the next generation remains a priority, with initiatives including the Washington Youth Tour, scholarships and classroom programs that promote leadership, education and electrical safety.

In addition, the cooperative continues to work alongside chambers of commerce and economic development agencies to support business growth, attract new opportunities and strengthen the local economy. Through these efforts, Owen Electric demonstrates our ongoing commitment to powering not only homes and businesses, but also the communities we proudly serve.

SAFETY FIRST

Communication in the field

Clear and consistent communication with our valued employees is vital, and it especially supports our safety culture.

Our lineworkers follow a regimen of task briefings, tailgate talks, disciplined radio use and written switching/clearance procedures. We work with our fellow cooperatives across the commonwealth to control costs and access top-tier training. This reinforces practices that keep everyone safe.

We are eager to answer questions and demonstrate electric safety in the communities we serve, and we encourage you to contact Owen Electric if you are interested in organizing a presentation for civic groups or schools.



Owen Electric crews participate in a chainsaw operation and line clearing workshop. Linework takes a variety of specialized skills, including the safe removal of trees and limbs from energized lines. Photo: Whitney Duvall



WHERE YOU HEAR FROM US

Connecting with our members is a top priority for Owen Electric. Our cooperative was built by, belongs to and serves members just like you. So, we want to meet you where you are. We have multiple channels of communication. From *Kentucky Living* to our social media pages to the front desks in our offices, we are here to serve you and keep you informed about timely updates, electrical safety, energy efficiency and cooperative business.

KENTUCKY LIVING

A recent survey shows that our members rely on *Kentucky Living* more than any other source for information about Owen Electric. We are pleased to provide a subscription to the flagship magazine of Kentucky's electric cooperatives. It is a proven and cost-effective way to convey important updates about Owen Electric, as well as a source of positive and forthright information. For less than the cost of a first-class stamp, we effectively communicate with our members and support our overall mission to improve the quality of life in the communities we serve.

WEBSITE AND APP

Our commitment to clearly communicate with you is demonstrated in our investment in innovative tools such as ownelectric.com and our app, OEC Mobile. You can view usage, pay your bill, enroll in text alerts, report outages, check the outage map and apply for member programs.

SOCIAL MEDIA

Follow Owen Electric on Facebook, X or Instagram for timely updates, outage restoration progress, planned work, scam alerts, right-of-way information, safety reminders and event news.

DIRECT HELP

Call, chat or visit us in person—we're here for billing options, payment assistance and to answer your questions on energy use, from your kitchen to your garage.

ANNUAL MEETING AND IN THE COMMUNITY

We report results, answer questions and invite feedback at schools, civic groups and community events, including our Member Appreciation Days and annual meeting. Being present in the community is an important part of how we communicate.



Member Service Representative Abigail Williams is ready to assist and serve members visiting Owen Electric's Grant County office location. Photo: Whitney Duvall



COMMUNICATION PRIORITIES

Reliable electricity powers all of our lives. At Owen Electric, we work hard every day to make sure it's something you can count on without a second thought. We advocate on your behalf for reliable energy; we report on our financial health, so you can see how your cooperative performs; and we live and breathe the cooperative difference.



RELIABILITY

Reliable electric service remains a top priority, and we believe keeping members informed is part of that responsibility. Owen Electric communicates about grid reliability, system planning and the long-term challenges facing the electric industry, including growing demand and changes in how electricity is generated and delivered.

We also advocate for policies that support reliability, affordability and local decision-making—because dependable power is essential to daily life, economic development and public safety. By explaining these issues clearly and consistently, we aim to help members understand both the challenges ahead and the steps being taken to keep the lights on.



FINANCIAL HEALTH AND TRANSPARENCY

Like families and businesses across our communities, Owen Electric has faced rising costs in recent years. Inflation has increased the cost of electricity we purchase on your behalf and the price of the materials, equipment and services required to operate and maintain the electric system. We believe it is important to be candid about these pressures and to explain what is driving them. As a not-for-profit cooperative, we work to manage these costs responsibly, plan carefully and communicate clearly—so members understand not only what they pay for electric service, but why.

Our annual independent audit affirms that our financial statements are accurate and fair, and we publish financials for member review.



COOPERATIVE PRINCIPLES

Cooperatives around the world operate according to the same set of seven core principles and values. These principles are a key reason that Owen Electric operates differently from many other electric utilities. We put the needs of our members first, and pledge to clearly communicate with you.

Clear communication invites participation; and participation makes Owen Electric smarter, safer and stronger.

Top left: Christian Dempsey, left, son of Field Distribution Supervisor Chris Dempsey, served as an intern for Sen. Gex Williams, center, with Owen Electric CEO Michael Cobb. Photo: Wade Harris; Center: Lineman Josh Keeton works to ready a new home in a subdivision for power. Photo: Whitney Duvall; Top right: Owen Electric representatives register members at the Member Appreciation and Annual Meeting event in Walton. Photo: Whitney Duvall



OWEN ELECTRIC COOPERATIVE ANNUAL MEETING OF MEMBERS

Arthur Service Center
13179 Walton-Verona Rd., Walton, KY 41094
Friday, June 12
Registration: 4-6 p.m.
Business Meeting: 6 p.m.

AGENDA

The annual meeting of the members of Owen Electric Cooperative will be at the Arthur Service Center, Walton, at 6 p.m. Eastern Daylight Time, Friday, June 12, 2026. The business session occurs for the purpose of taking the following actions:

1. Report of the officers and directors
2. To consider any and all other business that may properly come before the meeting or any adjournments thereof

Registration of members will start at 4 p.m. Eastern Daylight Time, Friday, June 12, 2026. All members must register in order to participate in the business meeting, to be eligible for prize drawings and to receive appreciation gifts. Students registering for the enhanced scholarship drawing must be accompanied by a registered parent or guardian (proper ID required for registration).

The drawing for one \$2,000 scholarship will take place following the business meeting; student and parent or guardian must be present to win. Members must also be present to win one of three grand prizes. Other prizes and \$1,000 scholarships will be drawn the week following the annual business meeting. Recipients need not be present to win.

Owen Electric Cooperative, Inc.
Charlie Richardson, Secretary-Treasurer



Michael Cobb
President and CEO



Alan Ahrman
Chairman, District 4
Pendleton and
Campbell counties



Eddie McCord
Vice Chairman,
District 2, Gallatin and
Carroll counties



Charlie Richardson
Secretary-Treasurer
District 1, Owen
County



Robert True
District 3, Grant and
Scott counties



Jim Henning
District 5, Southern
Boone County



Rick Messingschlager
District 6, Kenton
County



Hope Kinman
District 7, Northern
Boone County



OWEN ELECTRIC COOPERATIVE, INC.

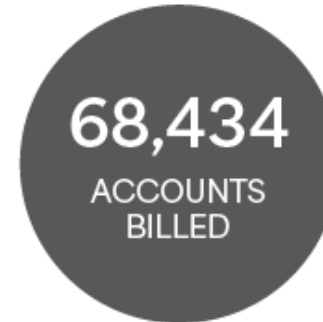
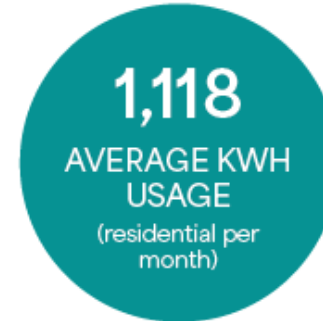
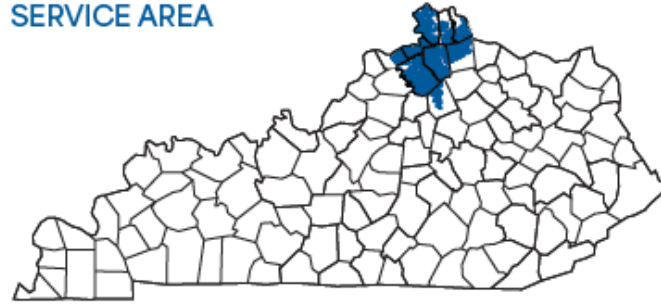
2025 by the numbers

ACTIVE ACCOUNTS

As of December 31, 2025

Boone County.....	26,127
Kenton County.....	14,417
Grant County.....	7,702
Owen County.....	5,503
Campbell County	4,183
Pendleton County.....	3,761
Gallatin County.....	3,543
Scott County.....	1,969
Carroll County.....	1,229
Total.....	68,434

SERVICE AREA

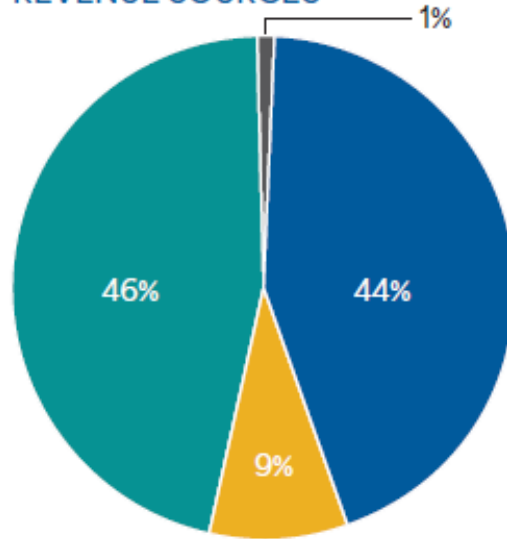


FOR INFORMATION AND INQUIRIES

8205 Hwy 127 N, PO Box 400
Owenton, KY 40359
1-800-372-7612
www.owenelectric.com

2025 FINANCIAL OVERVIEW

REVENUE SOURCES



- Residential
- Industrial
- Commercial
- Other

STATEMENT OF OPERATIONS

As of December 31, 2025

Operating Revenue	\$253,783,699
OPERATING EXPENSE	
Purchased Power	\$208,463,972
Operating System	23,950,977
Depreciation	12,941,375
Interest on Loans	3,688,219
Other Deductions	60,865
Total Cost of Electric Service	\$249,105,408
Operating Margins	\$4,678,291
Non-Operating Margins	725,003
G & T Capital Credits	5,941,069
Other Capital Credits	574,197
Patronage Capital and Margins	11,918,560

BALANCE SHEET

As of December 31, 2025

ASSETS	
Total Utility Plant	\$375,480,723
Less Depreciation	200,934,858
Net Utility Plant	\$174,545,865
Investments in Associate Organization	\$109,663,373
Cash	13,686,834
Accounts and Notes Receivable	22,797,182
Inventory	2,705,211
Prepaid Expenses	715,160
Deferred Debits and Other Assets	2,153,850
Total Assets	\$326,267,475
LIABILITIES	
Consumer Deposits	2,075,450
Membership and Other Equities	184,969,313
Long-Term Debt	99,050,732
Notes and Accounts Payable	22,318,981
Other Current Liabilities	17,852,999
Total Liabilities	\$326,267,475

OWEN ELECTRIC'S MEMBER APPRECIATION DAYS & ANNUAL MEETING

FRIDAY, JUNE 12

Owen Electric's Arthur Service Center
13179 Walton Verona Road
Walton, KY 41094

Registration opens: 4 p.m.
Business meeting: 6 p.m.

Three \$500 energy gift certificates* and a \$2,000 scholarship drawn at the annual meeting; must be present to win. Other prize drawings and \$1,000 scholarships will be drawn the week following; need not be present to win.

**Energy gift certificate value to be credited to winning member's account. Balance is not transferrable or redeemable for cash. Member forfeits any unused credit balance when account is closed.*

2026 MEMBER APPRECIATION DAY SCHEDULE

Registration will be available 8 a.m.–4:30 p.m. at each location only on the respective date shown below. Find us in the parking lot of the following locations:

Monday, June 1 - Owen County
Owen Electric Headquarters
8205 Hwy. 127 N
Sparta, KY 41086

Tuesday, June 2 - Grant County
Primal Market (near Owen Electric's Dry Ridge branch office)
66 South Main St.
Dry Ridge, KY 41035

Wednesday, June 3 - Pendleton County
Sharp Middle School
35 Wright Road
Butler, KY 41006

Thursday, June 4 - Gallatin County
Kentucky Speedway Gift Shop
1 Speedway Drive
Sparta, KY 41086

Friday, June 5 - Campbell County
Main Street Church
11093 Alexandria Pike
Alexandria, KY 41001

Monday, June 8 - Boone County
Florence Government Center (near the Florence Aquatic Center)
8100 Ewing Blvd
Florence, KY 41042
AND
Longbranch Elementary School
2805 Longbranch Rd
Union, KY 41091

Tuesday, June 9 - Kenton County
Nicholson Christian Church
1970 Walton Nicholson Road
Independence, KY 41051

Wednesday, June 10 - Carroll County
General Butler State Resort Park (near the park entrance across from the JCTC campus)
1608 KY Hwy. 227
Carrollton, KY 41008

Thursday, June 11 - Scott County
Scott County Preschool
1306 Long Lick Pike
Georgetown, KY 40324





Corporate Services

MAY 2026

Human Resources

- ❖ Proposed Policy Updates
- ❖ Employee Outing- Florence Y'all's Game

120

Total Employees

Safety

❖ 2 Year No Lost Time Anniversary

13

Community Safety
Demos YTD

736

Days without
Lost Time Injury

73

Crew Visits YTD

April 2026

Statement of Operations



LINE NO		YEAR TO DATE				% FROM BUDGET	% CHANGE FROM LAST YEAR
		LAST YEAR A	THIS YEAR B	BUDGET C	THIS MONTH D		
1.0	OPERATING REVENUE & PATRONAGE CAPITAL....	89,082,993.64	105,154,187.53	93,248,120.40	22,697,321.66	12.8	18.0
2.0	POWER PRODUCTION EXPENSE.....	4,406.99-	.00	.00	.00	.0	100.0
3.0	COST OF PURCHASED POWER.....	73,518,822.00-	89,515,522.00-	78,590,537.97-	19,174,287.00-	13.9	21.8
4.0	TRANSMISSION EXPENSE.....	.00	.00	.00	.00	.0	.0
5.0	REGIONAL MARKET OPERATIONS EXPENSE.....	.00	.00	.00	.00	.0	.0
6.0	DISTRIBUTION EXPENSE-OPERATION.....	1,999,208.08-	2,156,251.78-	2,002,986.52-	511,790.71-	7.7	7.9
7.0	DISTRIBUTION EXPENSE-MAINTENANCE.....	2,364,115.76-	2,583,257.51-	2,844,272.14-	620,448.56-	9.2-	9.3
8.0	CONSUMER ACCOUNTS EXPENSE.....	1,371,504.89-	1,390,763.40-	1,382,335.56-	314,148.52-	.6	1.4
9.0	CUSTOMER SERVICE & INFORMATIONAL EXPENSE.	283,215.24-	270,034.75-	263,927.65-	50,248.83-	2.3	4.7-
10.0	SALES EXPENSE.....	.00	.00	.00	.00	.0	.0
11.0	ADMINISTRATIVE & GENERAL EXPENSE.....	1,953,418.33-	2,004,630.80-	2,198,306.86-	469,647.38-	8.8-	2.6
12.0	TOTAL OPERATIONS & MAINTENANCE EXPENSE...	81,494,691.29-	97,920,460.24-	87,282,366.70-	21,140,571.00-	12.2	20.2
13.0	DEPRECIATION & AMORTIZATION EXPENSE.....	4,313,817.95-	4,181,862.12-	4,371,970.68-	1,019,952.61-	4.3-	3.1-
14.0	TAX EXPENSE - PROPERTY & GROSS RECEIPTS..	.00	.00	.00	.00	.0	.0
15.0	TAX EXPENSE - OTHER.....	.00	.00	.00	.00	.0	.0
16.0	INTEREST ON LONG TERM DEBT.....	1,203,667.29-	1,153,325.45-	1,138,623.83-	287,471.64-	1.3	4.2-
17.0	INTEREST CHARGED TO CONSTRUCTION - CREDIT	.00	.00	.00	.00	.0	.0
18.0	INTEREST EXPENSE - OTHER.....	28,939.19-	30,519.98-	38,103.08-	10,512.48-	19.9-	5.5
19.0	OTHER DEDUCTIONS.....	12,216.92-	57,466.39-	16,666.64-	2,494.33-	244.8	370.4
20.0	TOTAL COST OF ELECTRIC SERVICE.....	87,053,332.64-	103,343,634.18-	92,847,730.93-	22,461,002.06-	11.3	18.7
21.0	PATRONAGE CAPITAL & OPERATING MARGINS....	2,029,661.00	1,810,553.35	400,389.47	236,319.60	352.2	10.8-
22.0	NON OPERATING MARGINS - INTEREST.....	343,418.15	236,549.84	285,533.32	53,955.30	17.2-	31.1-
23.0	ALLOW. FOR FUNDS USED DURING CONSTRUCTION	.00	.00	.00	.00	.0	.0
24.0	INCOME (LOSS) FROM EQUITY INVESTMENTS....	.00	.00	.00	.00	.0	.0
25.0	NON OPERATING MARGINS - OTHER.....	1,063.85-	30,962.12	.00	10,888.41	100.0	3010.4-
26.0	GENERATION & TRANSMISSION CAPITAL CREDITS	.00	.00	.00	.00	.0	.0
27.0	OTHER CAPITAL CREDITS & PATRONAGE DIVID..	71,995.65	105,809.38	70,000.00	.00	51.2	47.0
28.0	EXTRAORDINARY ITEMS.....	.00	.00	.00	.00	.0	.0
29.0	PATRONAGE CAPITAL OR MARGINS.....	2,444,010.95	2,183,874.69	755,922.79	301,163.31	188.9	10.6-

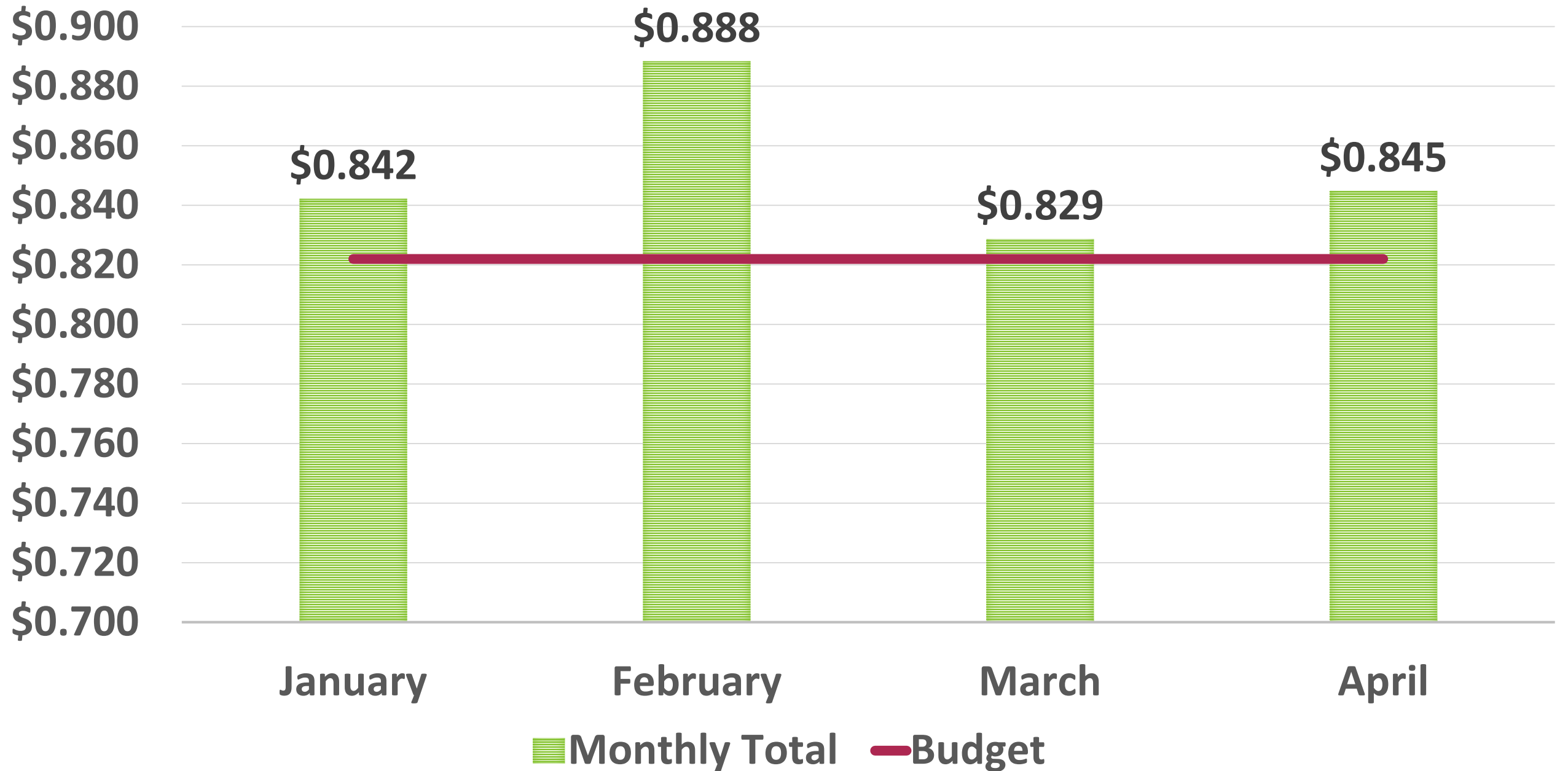
April 2026 Balance Sheet



OWEN Electric

LINE NO	ASSETS AND OTHER DEBITS		LIABILITIES AND OTHER CREDITS		
1.0	TOTAL UTILITY PLANT IN SERVICE	378,290,458.83	30.0	MEMBERSHIPS	1,378,205.00-
2.0	CONSTRUCTION WORK IN PROGRESS	2,037,338.62	31.0	PATRONAGE CAPITAL	161,529,499.03-
3.0	TOTAL UTILITY PLANT	380,327,797.45	32.0	OPERATING MARGINS - PRIOR YEAR	11,193,556.91-
4.0	ACCUM PROV FOR DEP & AMORT	203,994,852.44-	33.0	OPERATING MARGINS-CURRENT YEAR	.00
5.0	NET UTILITY PLANT	176,332,945.01	34.0	NON-OPERATING MARGINS	2,641,366.06-
6.0	NON-UTILITY PROPERTY (NET)	.00	35.0	OTHER MARGINS & EQUITIES	10,290,743.99-
7.0	INVEST IN SUBSIDIARY COMPANIES	.00	36.0	TOTAL MARGINS & EQUITIES	187,033,370.99-
8.0	INV IN ASSOC ORG - PAT CAPITAL	108,510,371.52	37.0	LONG TERM DEBT - RUS (NET)	75,250,173.59-
9.0	INV IN ASSOC ORG OTHR GEN FND	.00		(PAYMENTS-UNAPPLIED	.00)
10.0	INV IN ASSOC ORG - NON GEN FND	1,153,021.00	38.0	LNG-TERM DEBT-FFB-RUS GUAR	.00
11.0	INV IN ECON DEVEL PROJECTS	.00	39.0	LONG-TERM DEBT OTHER-RUS GUAR	.00
12.0	OTHER INVESTMENTS	14,759.07	40.0	LONG TERM DEBT - OTHER (NET)	22,531,445.25-
13.0	SPECIAL FUNDS	.00	41.0	LNG-TERM DEBT-RUS-ECON DEV NET	.00
14.0	TOT OTHER PROP & INVESTMENTS	109,678,151.59	42.0	PAYMENTS - UNAPPLIED	.00
15.0	CASH - GENERAL FUNDS	1,941,668.15	43.0	TOTAL LONG TERM DEBT	97,781,618.84-
16.0	CASH - CONSTRUCTION FUND TRUST	.00	44.0	OBLIGATION UNDER CAPITAL LEASE	.00
17.0	SPECIAL DEPOSITS	1,450.00	45.0	ACCUM OPERATING PROVISIONS	11,941,171.43-
18.0	TEMPORARY INVESTMENTS	10,108,694.99	46.0	TOTAL OTHER NONCURR LIABILITY	11,941,171.43-
19.0	NOTES RECEIVABLE (NET)	.00	47.0	NOTES PAYABLE	2,882,725.10-
20.0	ACCTS RECV - SALES ENERGY (NET)	21,624,188.13	48.0	ACCOUNTS PAYABLE	20,828,915.90-
21.0	ACCTS RECV - OTHER (NET)	648,818.33	49.0	CONSUMER DEPOSITS	2,088,217.61-
22.0	RENEWABLE ENERGY CREDITS	.00	50.0	CURR MATURITIES LONG-TERM DEBT	.00
23.0	MATERIAL & SUPPLIES-ELEC & OTH	2,764,896.94	51.0	CURR MATURIT LT DEBT ECON DEV	.00
24.0	PREPAYMENTS	499,088.14	52.0	CURR MATURITIES CAPITAL LEASES	.00
25.0	OTHER CURRENT & ACCR ASSETS	590,761.68	53.0	OTHER CURRENT & ACCRUED LIAB	5,136,908.58-
26.0	TOTAL CURRENT & ACCR ASSETS	38,179,566.36	54.0	TOTAL CURRENT & ACCRUED LIAB	30,936,767.19-
27.0	REGULATORY ASSETS	4,548,898.44	55.0	REGULATORY LIABILITIES	.00
28.0	OTHER DEFERRED DEBITS	299,272.15	56.0	OTHER DEFERRED CREDITS	1,345,905.10-
29.0	TOTAL ASSETS & OTHER DEBITS	329,038,833.55	57.0	TOTAL LIABILITIES & OTH CREDIT	329,038,833.55-

POWER COST TO REVENUE



RATIO	2026	BENCHMARK
TIER	2.89	1.25
OTIER	2.57	1.10
DISTRIBUTION EQUITY	35.61%	20%-40%
EQUITY RATIO	56.84%	>27%
CURRENT RATIO	1.23	>1.0
DAYS OF CASH ON HAND	173	100

More Than Just Margins: Decoding Our Key Financial Ratios

TIER: Times Interest Earned Ratio

TIER = (Total Margins + Long-Term Debt Interest) ÷ Long-Term Debt Interest

TIER = (line 29 + line 16) ÷ line 16

TIER measures our ability to cover interest expenses using our total margins. It represents the cushion we have between total margins and fixed interest obligations. Essentially, TIER shows how many times we could cover the cost of interest on debt with total margins.

OTIER: Times Interest Earned Ratio

OTIER = (Operating Margins + Long-Term Debt Interest) ÷ Long-Term Debt Interest

OTIER = (line 21 + line 16) ÷ line 16

OTIER measures our ability to cover interest expenses using our operating margins. It represents the cushion we have between operating margins and fixed interest obligations. Essentially, OTIER shows how many times we could cover the cost of interest on debt when our interest earnings, G&T allocations, and other non-operating margins are removed from the calculation.

TIER CALCULATION



14.0	TAX EXPENSE - PROPERTY & GROSS RECEIPTS..	.00	.00
15.0	TAX EXPENSE - OTHER.....	.00	.00
16.0	INTEREST ON LONG TERM DEBT.....	1,203,667.29-	1,153,325.45-
17.0	INTEREST CHARGED TO CONSTRUCTION - CREDIT	.00	.00
18.0	INTEREST EXPENSE - OTHER.....	28,939.19-	30,519.98-
19.0	OTHER DEDUCTIONS.....	12,216.92-	57,466.39-
20.0	TOTAL COST OF ELECTRIC SERVICE.....	87,053,332.64-	103,343,634.18-
=====			
21.0	PATRONAGE CAPITAL & OPERATING MARGINS....	2,029,661.00	1,810,553.35
22.0	NON OPERATING MARGINS - INTEREST.....	343,418.15	236,549.84
23.0	ALLOW. FOR FUNDS USED DURING CONSTRUCTION	.00	.00
24.0	INCOME (LOSS) FROM EQUITY INVESTMENTS....	.00	.00
25.0	NON OPERATING MARGINS - OTHER.....	1,063.85-	30,962.12
26.0	GENERATION & TRANSMISSION CAPITAL CREDITS	.00	.00
27.0	OTHER CAPITAL CREDITS & PATRONAGE DIVID..	71,995.65	105,809.38
28.0	EXTRAORDINARY ITEMS.....	.00	.00
29.0	PATRONAGE CAPITAL OR MARGINS.....	2,444,010.95	2,183,874.69

$$\text{TIER} = (\text{line 29} + \text{line 16}) \div \text{line 16}$$

$$2.894 = (2,183,874.69 + 1,153,325.45) \div 1,153,325.45$$

OTIER CALCULATION



14.0	TAX EXPENSE - PROPERTY & GROSS RECEIPTS..	.00	.00
15.0	TAX EXPENSE - OTHER.....	.00	.00
16.0	INTEREST ON LONG TERM DEBT.....	1,203,667.29-	1,153,325.45-
17.0	INTEREST CHARGED TO CONSTRUCTION - CREDIT	.00	.00
18.0	INTEREST EXPENSE - OTHER.....	28,939.19-	30,519.98-
19.0	OTHER DEDUCTIONS.....	12,216.92-	57,466.39-
20.0	TOTAL COST OF ELECTRIC SERVICE.....	87,053,332.64-	103,343,634.18-
21.0	PATRONAGE CAPITAL & OPERATING MARGINS....	2,029,661.00	1,810,553.35
22.0	NON OPERATING MARGINS - INTEREST.....	343,418.15	236,343.84
23.0	ALLOW. FOR FUNDS USED DURING CONSTRUCTION	.00	.00
24.0	INCOME (LOSS) FROM EQUITY INVESTMENTS....	.00	.00
25.0	NON OPERATING MARGINS - OTHER.....	1,063.85-	30,962.12
26.0	GENERATION & TRANSMISSION CAPITAL CREDITS	.00	.00
27.0	OTHER CAPITAL CREDITS & PATRONAGE DIVID..	71,995.65	105,809.38
28.0	EXTRAORDINARY ITEMS.....	.00	.00
29.0	PATRONAGE CAPITAL OR MARGINS.....	2,444,010.95	2,183,874.69

OTIER = (line 21 + line 16) ÷ line 16

$$2.57 = (1,810,553.35 + 1,153,325.45) \div 1,153,325.45$$

MEMBER SERVICES REPORT - 5/26/26



OWEN Electric

A Touchstone Energy Cooperative 

Member Account Activity	Current Month 2026	Last Month 2026	Same Period Last Year 2025
Bank Deposits	\$14,001,356.22	\$16,678,993.36	\$14,204,088.22
Accounts Billed	68,827	68,584	67,326
Total Billing (Excluding Taxes)	\$13,130,055.13	\$11,881,424.51	\$12,054,146.99
Delinquent Notices Mailed	7,949	9,658	8,905
Total Delinquent Amount	\$1,661,407.19	\$2,563,846.94	\$1,705,292.32
Total Penalty Amount	\$75,255.78	\$127,543.13	\$83,068.00
Number of Arrangements	1,199	1,591	1,492
Total Amount of Arrangements	\$277,924.23	\$542,220.64	\$382,241.06
Return Check Amount	\$32,280.51	\$62,356.71	\$20,225.01
Number of Return Checks	141	164	101
Office Pymts (Walk-in & Drive-thru)	1,413	2,667	3,009
Cutoff Tickets	1,506	1,506	1,444
Actual Cutoffs	869	638	503
Account total disconnect by AMI	869	638	503
New Accounts Set Up	693	588	554
Service Orders	3,160	2,647	2,716
Calls Answered by Member Services Reps	9,118	9,361	8,894
Telelink Calls	28,150	28,742	27,209
Member Services Collection Program	\$6,017.02	\$2,932.77	\$5,105.22
Total Collections by Member Services	\$1,151,785.59		



April Power Bill Statistics

*	APRIL '26	MARCH '26	APRIL '25
OWEN'S COINCIDENT PEAK (kW)	198,755	230,183	196,775
~ PERCENTAGE OF EKPC'S TOTAL LOAD	12.65%	10.29%	10.11%
ENERGY (kWh MEASURED @ SUBS)	98,208,519	110,051,041	98,006,420
AVERAGE TEMPERATURE (CVG)	60.6^o	51.4^o	55.8^o
DEGREE DAYS	214	433	305
B RATE TOTALS (kW) & PERCENTAGE OF TOTAL LOAD	30,889	29,492	30,304
	15.54%	12.81%	15.40%

***does not include Nucor**



2026 Member Appreciation Days

Registration will be available 8 a.m.–4:30 p.m. at each location only on the respective date shown below. Find us in the parking lot of the following locations:

Monday, June 1 - Owen County

Owen Electric Headquarters
8205 Hwy. 127 N
Sparta, KY 41086

Tuesday, June 2 - Grant County

Primal Market (near Owen Electric's Dry Ridge branch office)
66 South Main St.
Dry Ridge, KY 41035

Wednesday, June 3 - Pendleton County

Sharp Middle School
35 Wright Road
Butler, KY 41006

Thursday, June 4 - Gallatin County

Kentucky Speedway Gift Shop
1 Speedway Drive
Sparta, KY 41086

Friday, June 5 - Campbell County

Main Street Church
11093 Alexandria Pike
Alexandria, KY 41001

Monday, June 8 - Boone County

Florence Government Center
(near the Florence Aquatic Center)
8100 Ewing Blvd
Florence, KY 41042

AND

Longbranch Elementary School
2805 Longbranch Rd
Union, KY 41091

Tuesday, June 9 - Kenton County

Nicholson Christian Church
1970 Walton Nicholson Road
Independence, KY 41051

Wednesday, June 10 - Carroll County

General Butler State Resort Park
(near the park entrance across from the JCTC campus)
1608 KY Hwy. 227
Carrollton, KY 41008

Thursday, June 11 - Scott County

Scott County Preschool
1306 Long Lick Pike
Georgetown, KY 40324



OWEN Electric

Annual Meeting 2026

OWEN ELECTRIC'S MEMBER APPRECIATION DAYS & ANNUAL MEETING

FRIDAY, JUNE 12

Owen Electric's Arthur Service Center

13179 Walton Verona Road
Walton


Registration opens: 4 p.m.

Business Meeting: 6 p.m.



A Touchstone Energy[®] Cooperative 



A Touchstone Energy[®] Cooperative 

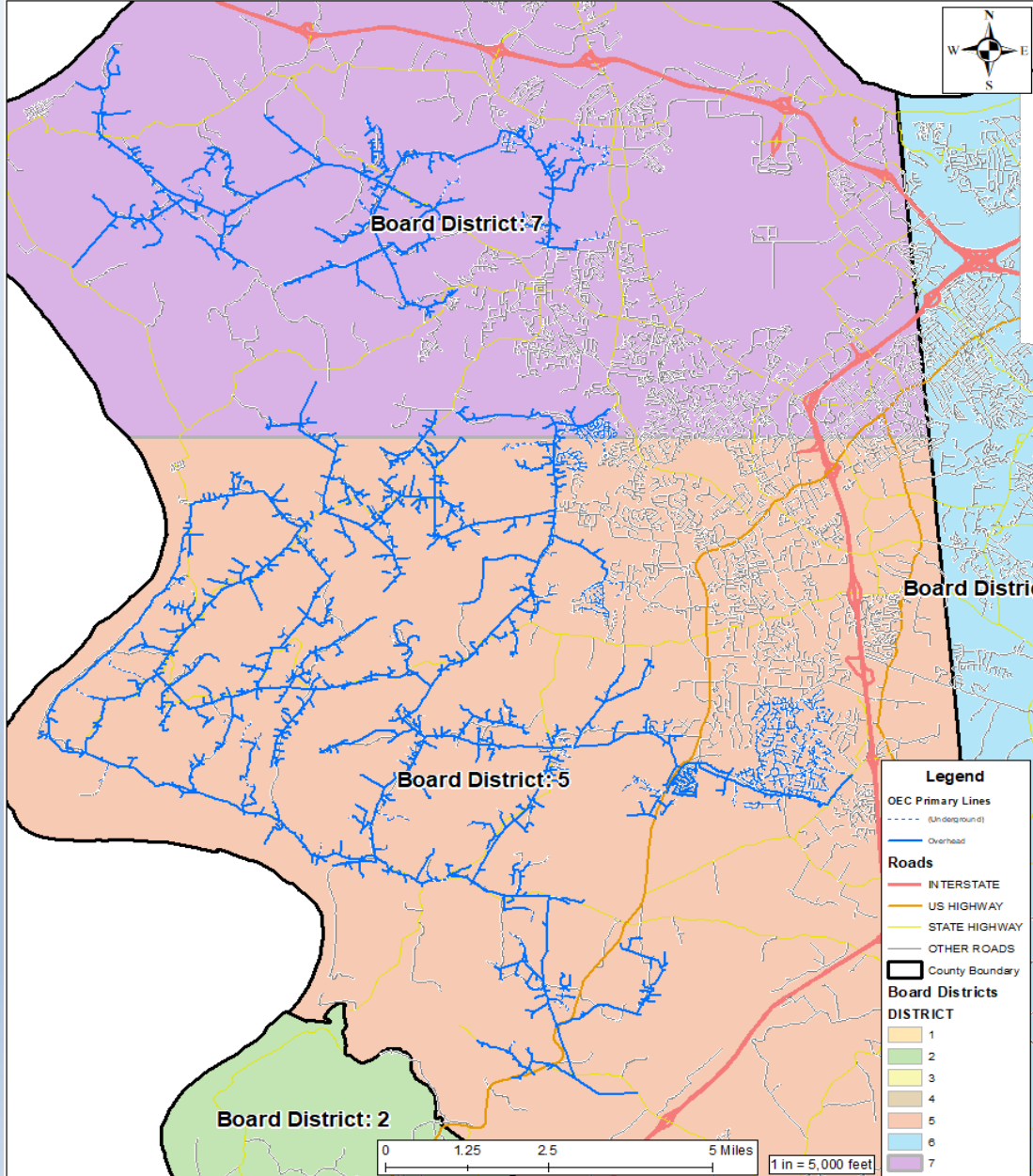


Operations Board Report

May 2026



Pole Treatment

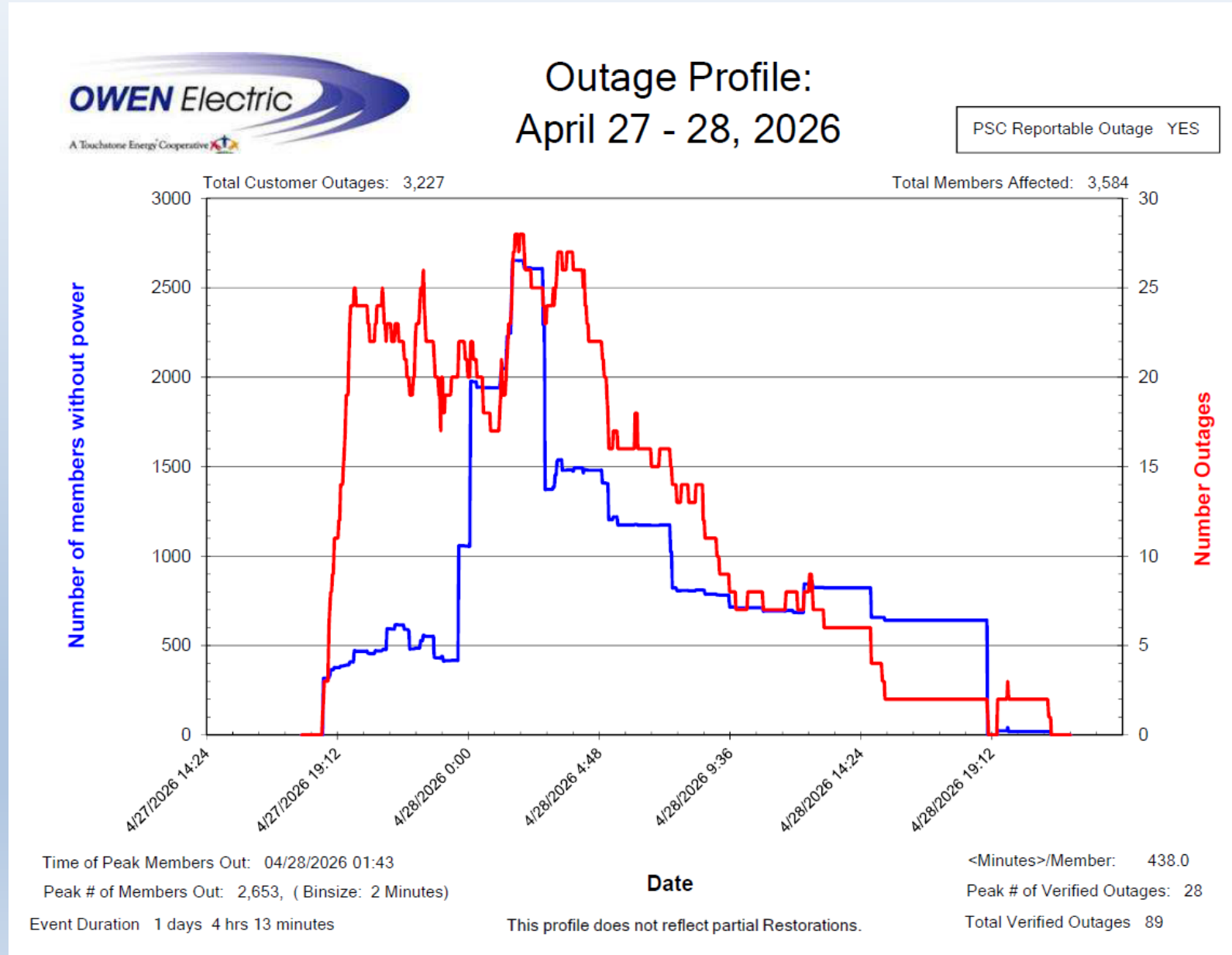


- Power Pole Maintenance Co.
- Total Poles to test/treat - 5767
 - Boone Circuits 1,2,3,4,5
 - 2325 poles
 - Bullittsville Circuits 1,2,3,4
 - 1123 poles
 - Big Bone Circuits 1,2,5
 - 1944 Poles
 - Richwood Circuits 1,2,4,5
 - 375 poles
- Begin late Summer/Early Fall
- 10 year cycle
- Budgeted - \$200,000 for 2026
 - Cost/pole in 2025 - \$22.92
 - Cost/pole in 2024 - \$21.09
 - Cost/pole in 2023 - \$21.93



April 27/28th Storm Update

- Strong thunderstorm with high winds and heavy lightning
- Outages started around 6:30pm on the 27th
- Members restored on the 28th around 10:30pm
- Total Duration – 1 Day 4hrs 13 mins.
- Outages Stats
 - Total members affected – 3,584
 - Peak # of members out – 2,653
 - 89 total verified outages
 - 7 Broken Poles
 - 1 Transformer replaced
 - 25 spans of wire down
 - Major Event Day

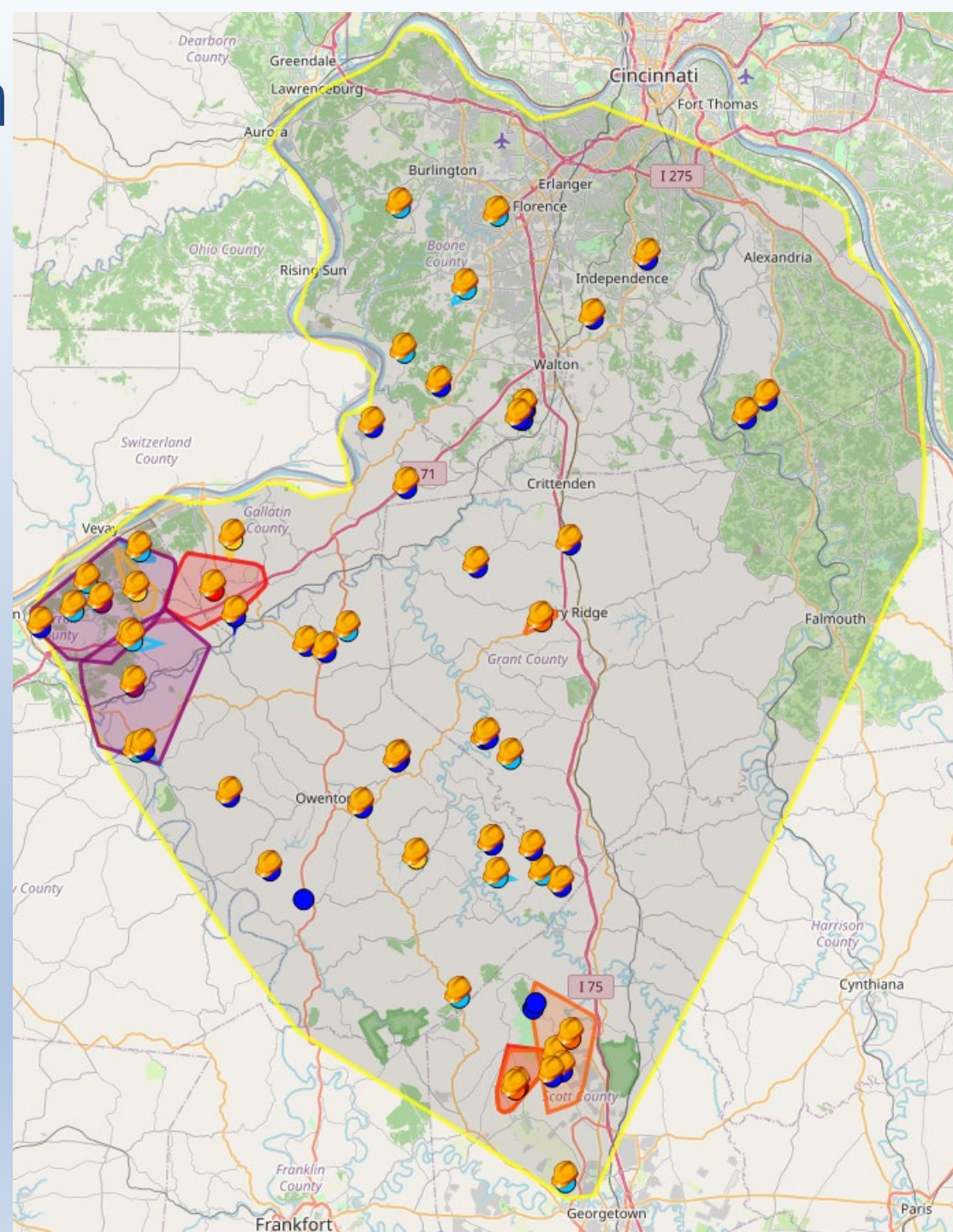




April 27/28th Storm Update

- Our Southern District was hit the worst
 - Carroll, Owen, Gallatin, Scott
- Southern Crews worked through the night
 - Brought crews from Walton at day break to finish up

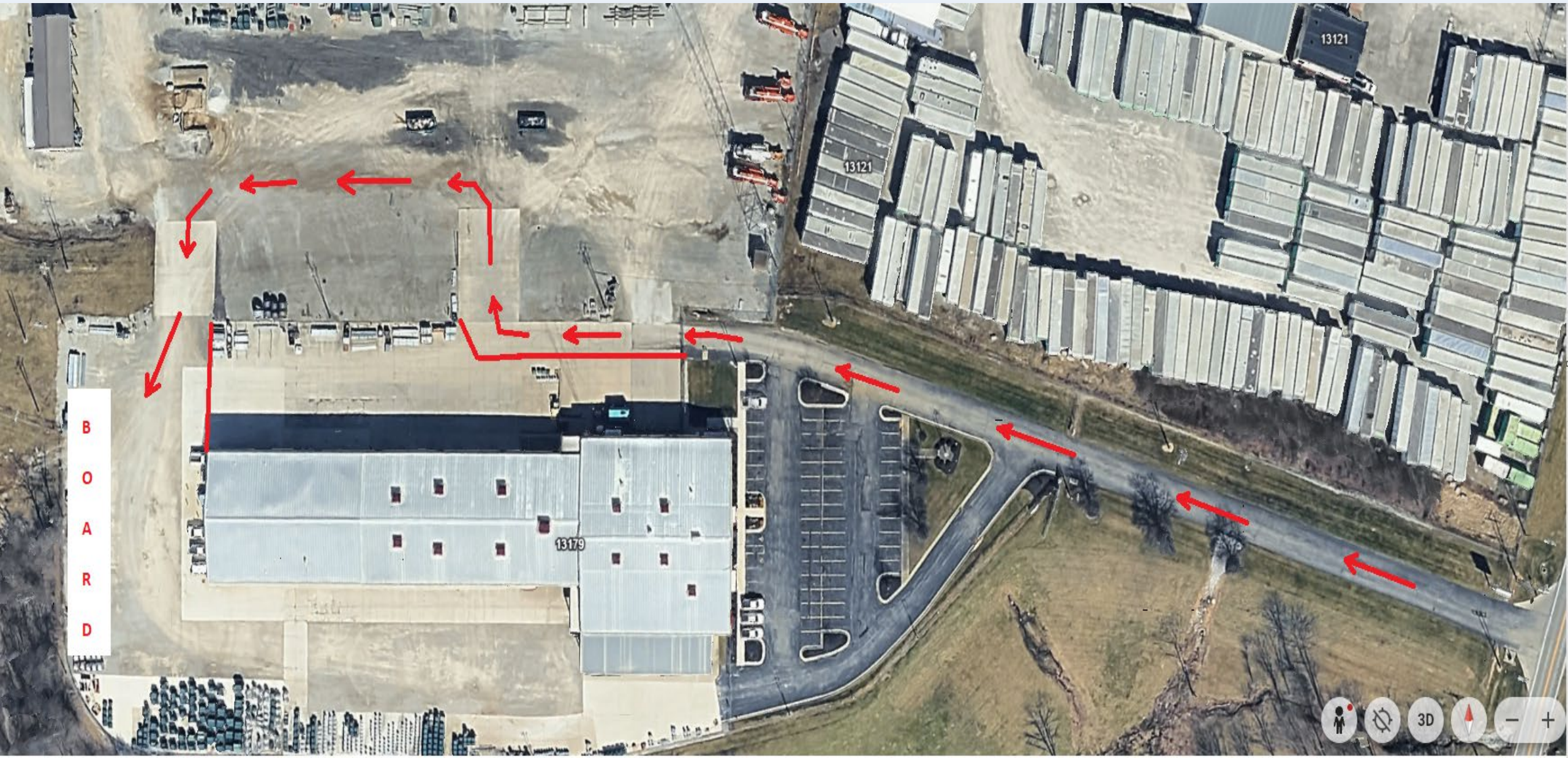
County	Members Affected
Boone	127
Campbell	92
Carroll	1,212
Gallatin	455
Grant	216
Kenton	21
Owen	663
Pendleton	8
Scott	429
Total	3,223



Outage Pics



Annual Meeting Parking



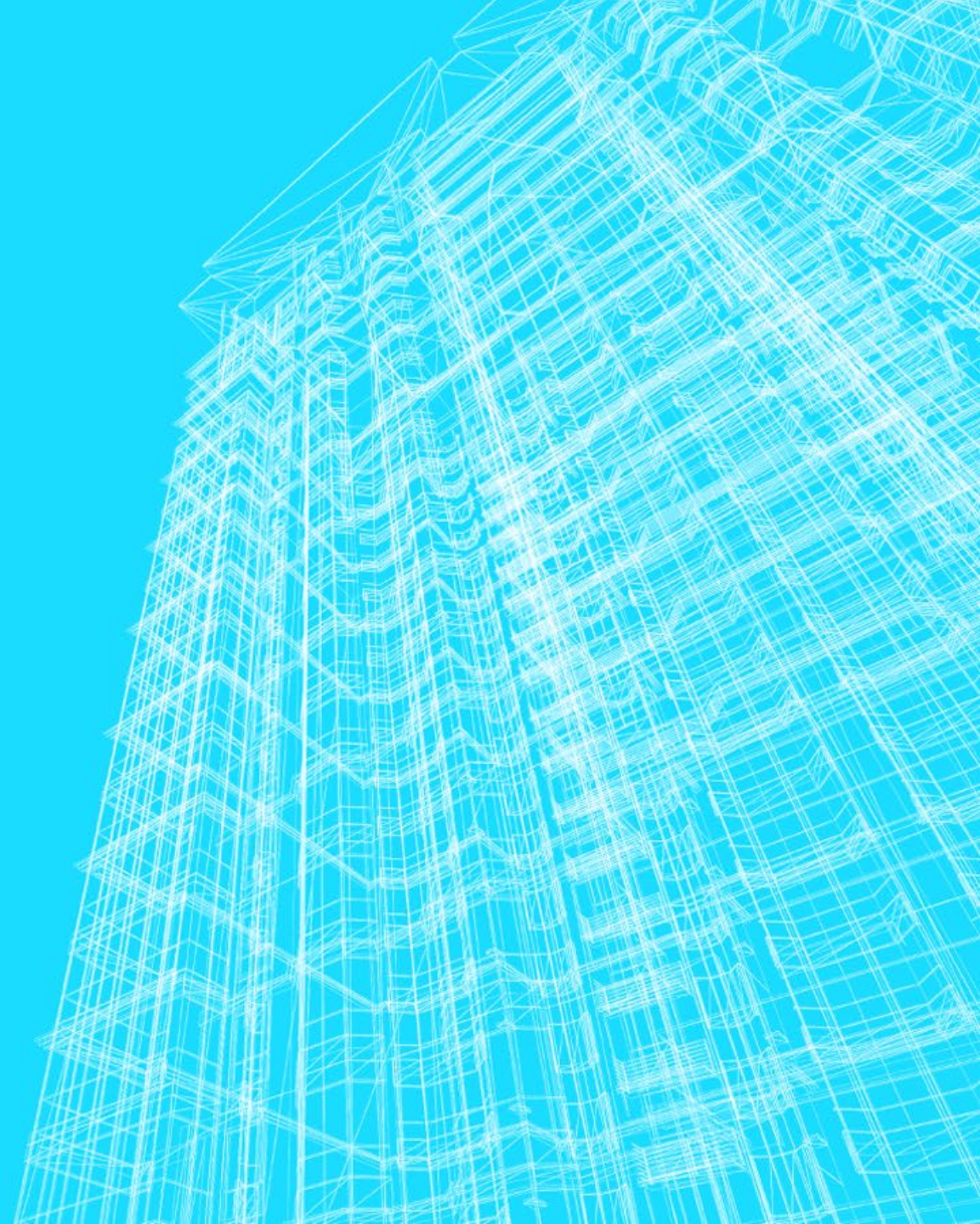


INFORMATION TECHNOLOGY

APRIL 2026

ENGINEERING

Andrew Long



ENGINEERING UPDATE RELIABILITY INDICES

2026 Reliability KPIs

	Q1	Q2	Q3	Q4	YTD
SAIDI	15.580	3.970			19.550
SAIFI	0.160	0.030			0.190
MED	0	2			2

Q2 KPI's		
	SAIDI	SAIFI
THRESHOLD	<31.551	<0.336
TARGET	<27.603	<0.329
STRETCH	<23.659	<0.292

- On pace to meet KPI Stretch goals in SAIDI or SAIFI for Q2.
- The bulk of the outages occurred on Major Event days due to storms, removing them from the KPI metrics. The MED's added 27 minutes to SAIDI and increased SAIFI by 0.24.



SUBSTATION CONSTRUCTION UPDATE

- Mineola Substation is now energized.
 - Started planning this substation in 2014, poised to serve further growth near the airport.
- Hebron Low Bay #2 is complete and energized.
 - We needed the extra bays to feed more circuits up Graves Rd, also gives us the ability to drop a second transformer, doubling the capacity in the area.
- Downing I and II are on EKPC Transmission and no longer Duke served.
 - Increased control and reliability of the Downing Loads.
 - Smith I and II are now the only Duke served substations and Mineola will take some of the Smith Load.
- Bullittsville Low Bay #2 is complete and energized.
 - Originally needed to just update, but added a second low bay to increase feeder capacity.
 - Has a tie to Hebron for back feeding capabilities.
- We are in a pretty good spot and all near term substation projects are complete, next will likely be increasing size of transformers at Bristow or adding to Bullittsville.



GENERAL STAKING UPDATES

- New Feed into Skilcraft off of new 795 from Downing is completed.
- Have about 1,150 lots in the subdivision workflow, including 400 apartment meters.
 - Most all of these are in existing subdivisions, or expansions of existing subdivisions.
- SD1 pump stations in Boone county are progressing.
- Will be serving the new Big Bone Discovery Center.
- Southern Tire Mart is looking to come in at Flying J in Walton.
- A new McDonalds is coming into Hebron that we will serve.
- The walls are up on the new Publix in Hebron.
- Will be serving “The Bend NKY” near the airport, sports bar with Soccer, pickleball, and adventure trails.
- Gene Snyder Airport is looking to upgrade to a 3phase service for some airplane carousels.
- Legacy Park in Kenton County at old Fox Run; pool, park and trails planned.



PSC RANDOM METER TESTING

- Started the PSC required Meter Sampling in April.
- Required to pull so many meters of each type, ends up being around 1,200 meters that need to be tested annually.
- Process and results should be finished by November.
- We do give notification and identification to the contractors to identify them as OEC contractors for meter testing purposes and they make contact with member before pulling the meter.

Review/Discuss/Approve- 400 Series Policies

-Motion: _____
-Approve: _____

Review/Discuss/Approve- Bylaw Change

-Motion: _____
-Approve: _____



EKPC Report



Report Presented By:
Alan Ahrman

Report Presented By: Rick Messingschlager

Attorney's Report Presented By: Jake Thompson

Information Agenda

2026 Board Meetings & Training

June 1, 2026-Membership Appreciation Day, Owen Electric Headquarters
June 2, 2026-Membership Appreciation Day, Grant County
June 3, 2026-Membership Appreciation Day, Pendleton County
June 4, 2026-Membership Appreciation Day, Gallatin County
June 5, 2026-Membership Appreciation Day, Campbell County
June 8, 2026-Membership Appreciation Day, Boone County
June 9, 2026-Membership Appreciation Day, Kenton County
June 9, 2026-EKPC Annual Meeting, 10:30am, Winchester, KY
June 10, 2026-Membership Appreciation Day, Carroll County
June 11, 2026-Membership Appreciation Day, Scott County
June 12, 2026-Annual Business Meeting, 6:00pm, Walton Service Center, Walton, KY
June 25, 2026-Regular Board Meeting, 9:00am, HQ-Owenton, KY
June 26-30, 2026-Summer School for Directors, Louisville, KY
July 30, 2026-Regular Board Meeting, 9:00am, HQ-Owenton, KY
August 10-11, 2026-KEC Annual Meeting, Louisville, KY
August 27, 2026-Regular Board Meeting, 9:00am, HQ-Owenton, KY
September 24, 2026-Regular Board Meeting, 9:00am, HQ-Owenton, KY
October 14-16, 2026-NRECA Regional Meeting, Orlando, FL
October 29, 2026-Regular Board Meeting, 9:00am, HQ-Owenton, KY
November 19, 2026-Regular Board Meeting, 9:00am, HQ-Owenton, KY
December 11-15, 2026-Winter School for Directors, Nashville, TN
December 17, 2026-Regular Board Meeting, 9:00am, HQ-Owenton, KY

- Conference Reports
 - As needed
- Old Business
- New Business
- Executive Session
- Miscellaneous
- Adjourn
 - Motion _____
 - Second _____